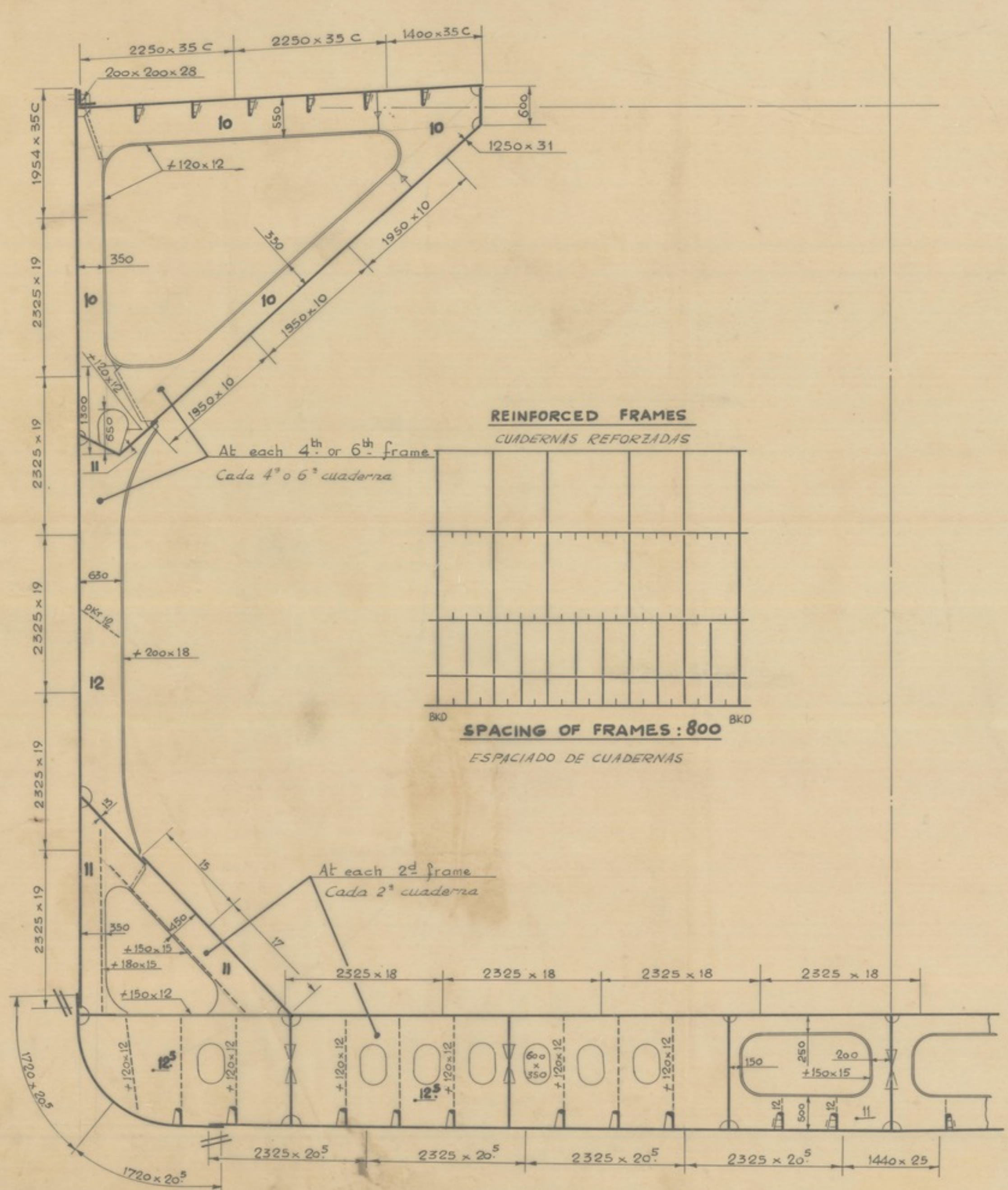


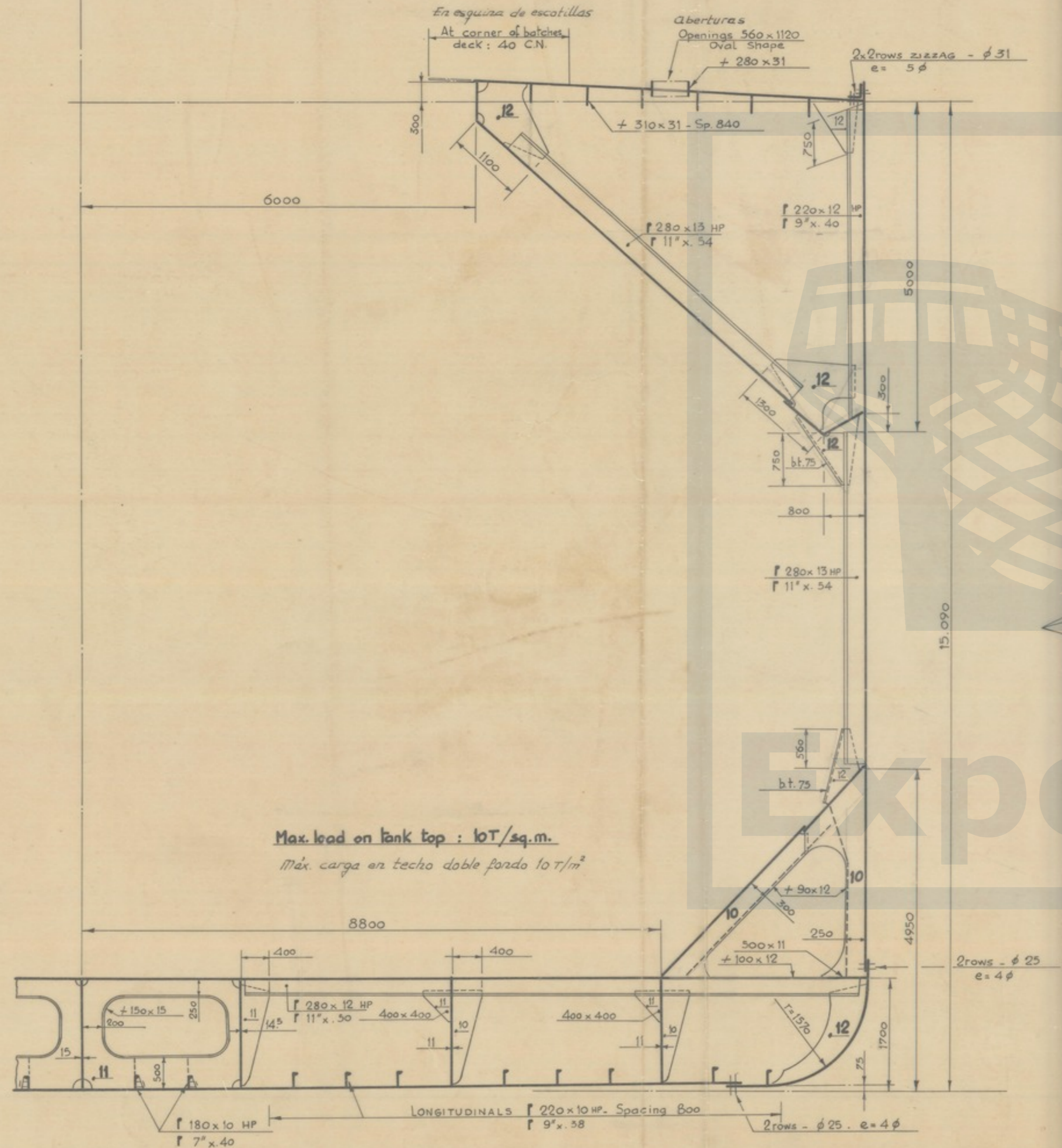
**REINFORCED FRAME**

CUADERNAS REFORZADAS



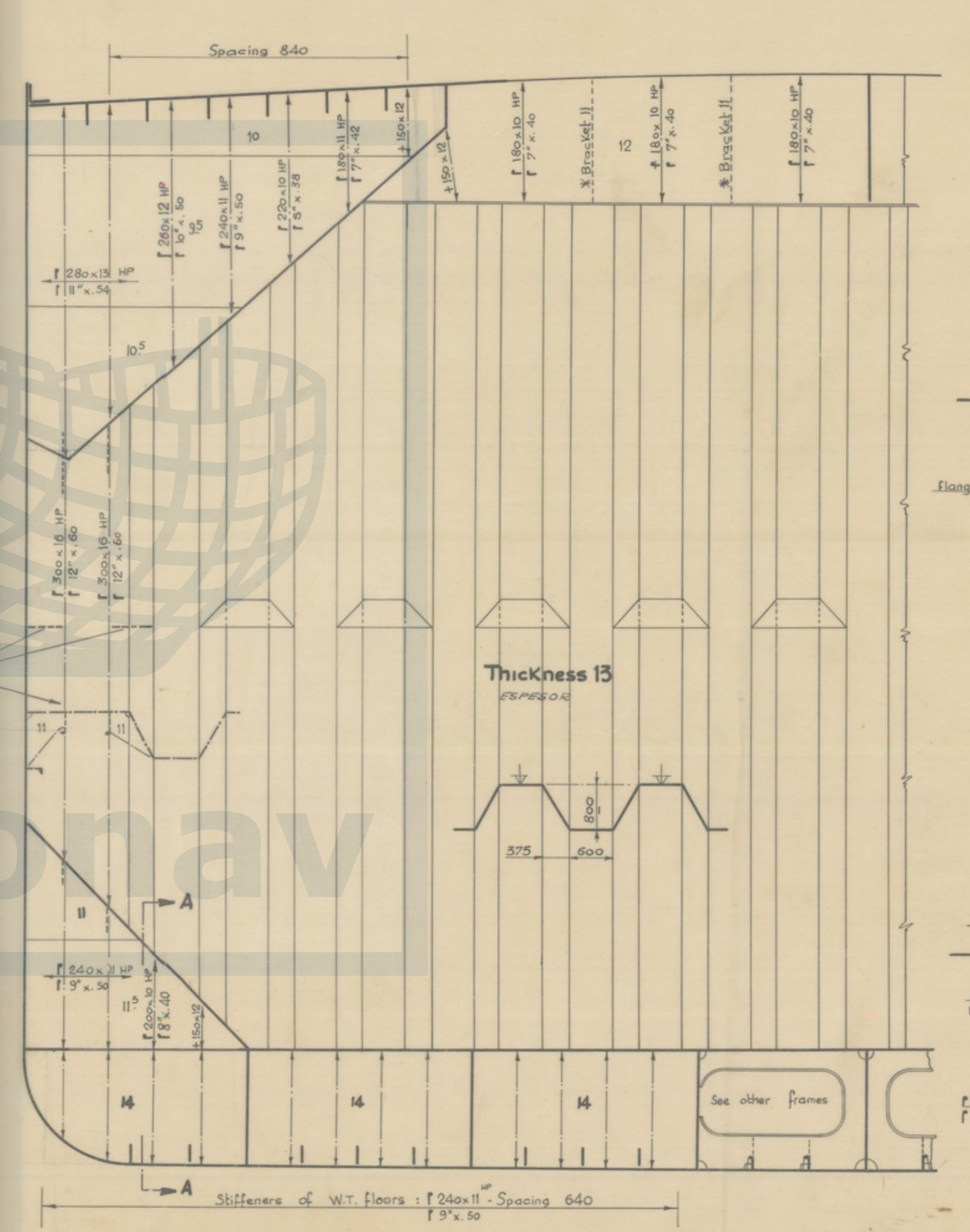
**ORDINARY FRAME**

CUADERNAS ORDINARIAS

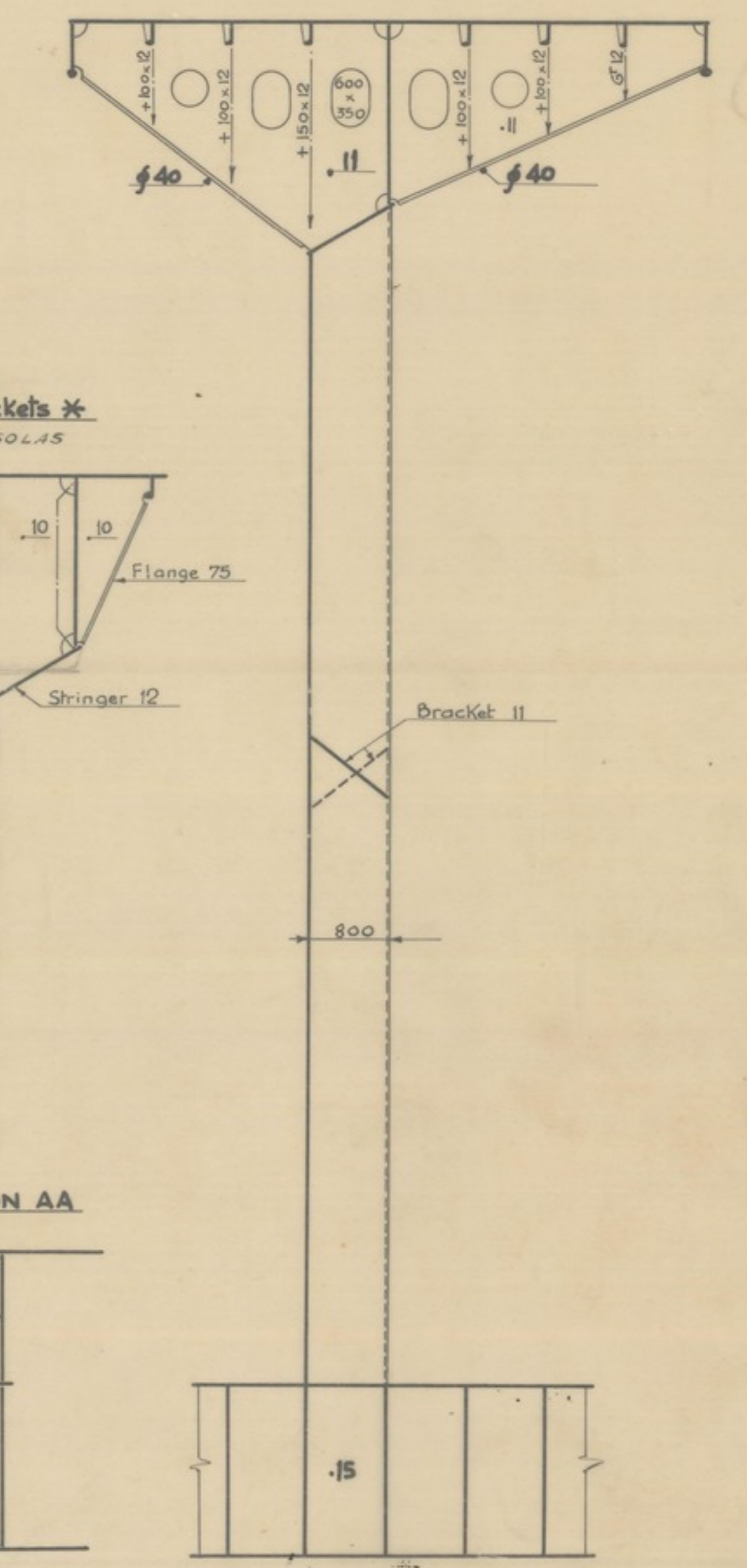


**TRANSVERSE BULKHEADS**

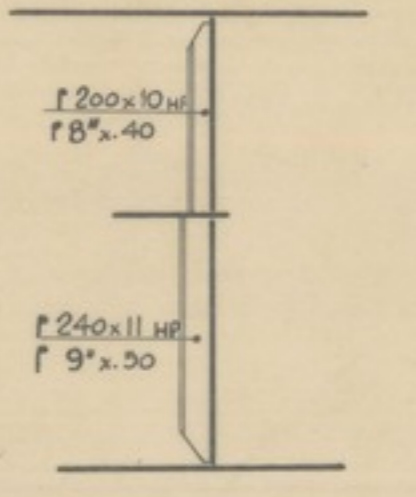
MAMPAROS TRANSVERSALES



**SECTION IN AXIS**



**SECTION AA**



**MAIN PARTICULARS**  
DIMENSIONES PRINCIPALES

ESLORA ENTRE PPS	Length b.p.p. : 581'6"	177.24 m.
TRANSA	Breadth moulded : 78'1"	23.80 m.
PUNTA	Depth moulded : 49'6"	15.09 m.
CALADO	Draft under Keel : 34'6"	10.515 m.
PESO MUERTO	Deadweight :	27.360 L.Tons

**EQUIPMENT**  
C=50 } Reserved

2 bower anchors (stockless) :	17.150 pounds	7770 Kgs
1 spase anchor (stockless) :	14.595 pounds	6610 Kgs
Chain : (High Strength) {	330 fathoms	605 m.
	diameter : 2 3/4"	70 mm.
Tow line: 2 {	150 fathoms	275 m.
	diameter : 2 1/4"	57 mm.

Class ABS : + A I E

CALCULADO	FECHA 28-12-61	Copias enviadas a:	ASTAND
DIBUJADO	ORDER B.166	SALIDA	
COMPROBADO	ESCALA 1:50	SI Ingeniero Usar	PLANO N.º
V.º B.º	27360 T.D.W. BULK-CARRIER		PR-9002
Classificado por	MINERALERO DE 27360 TONS DE P.M.		
Fecha	MIDSHIP SECTION		
	CUADERNA MAESTRA		