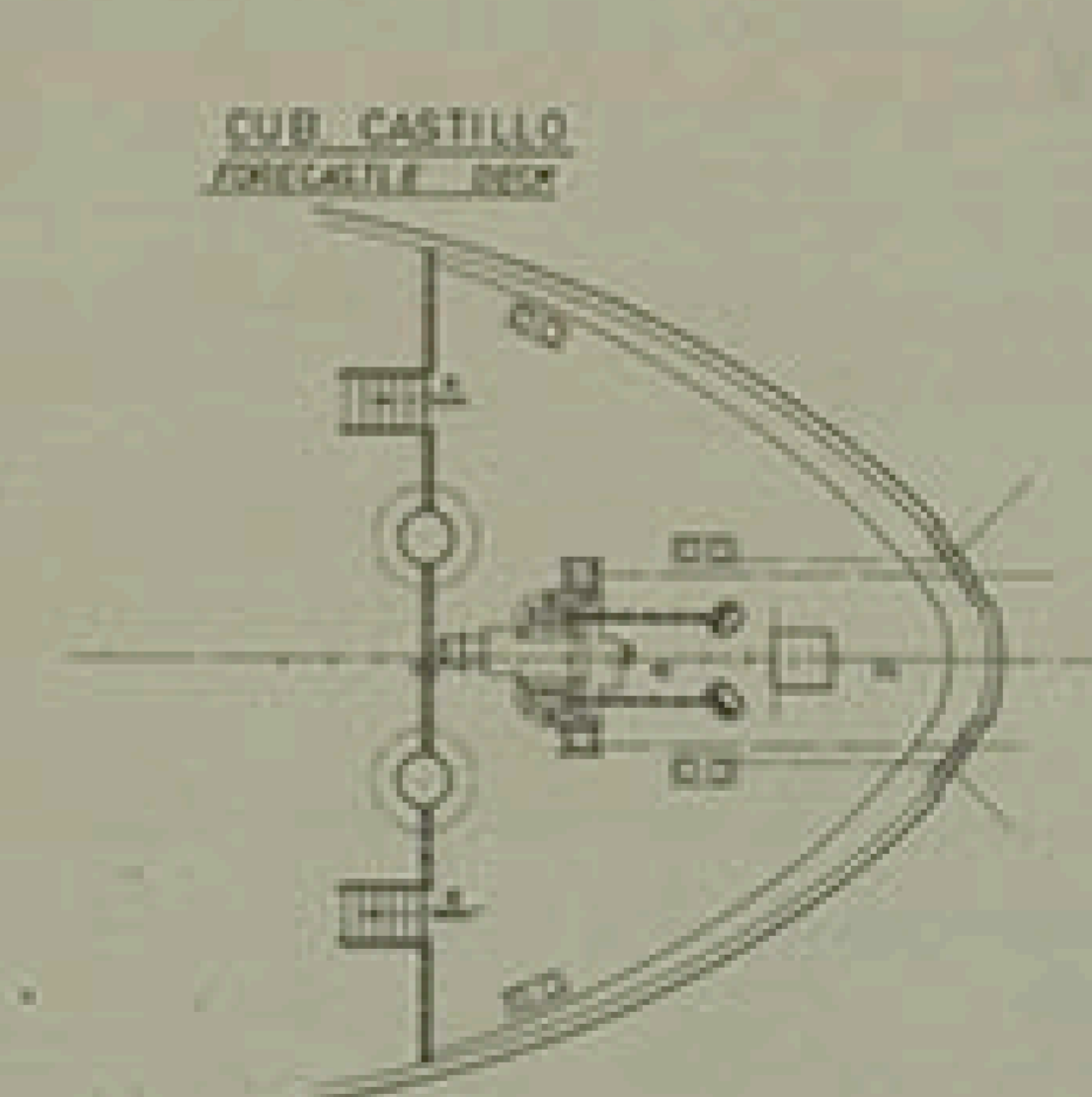
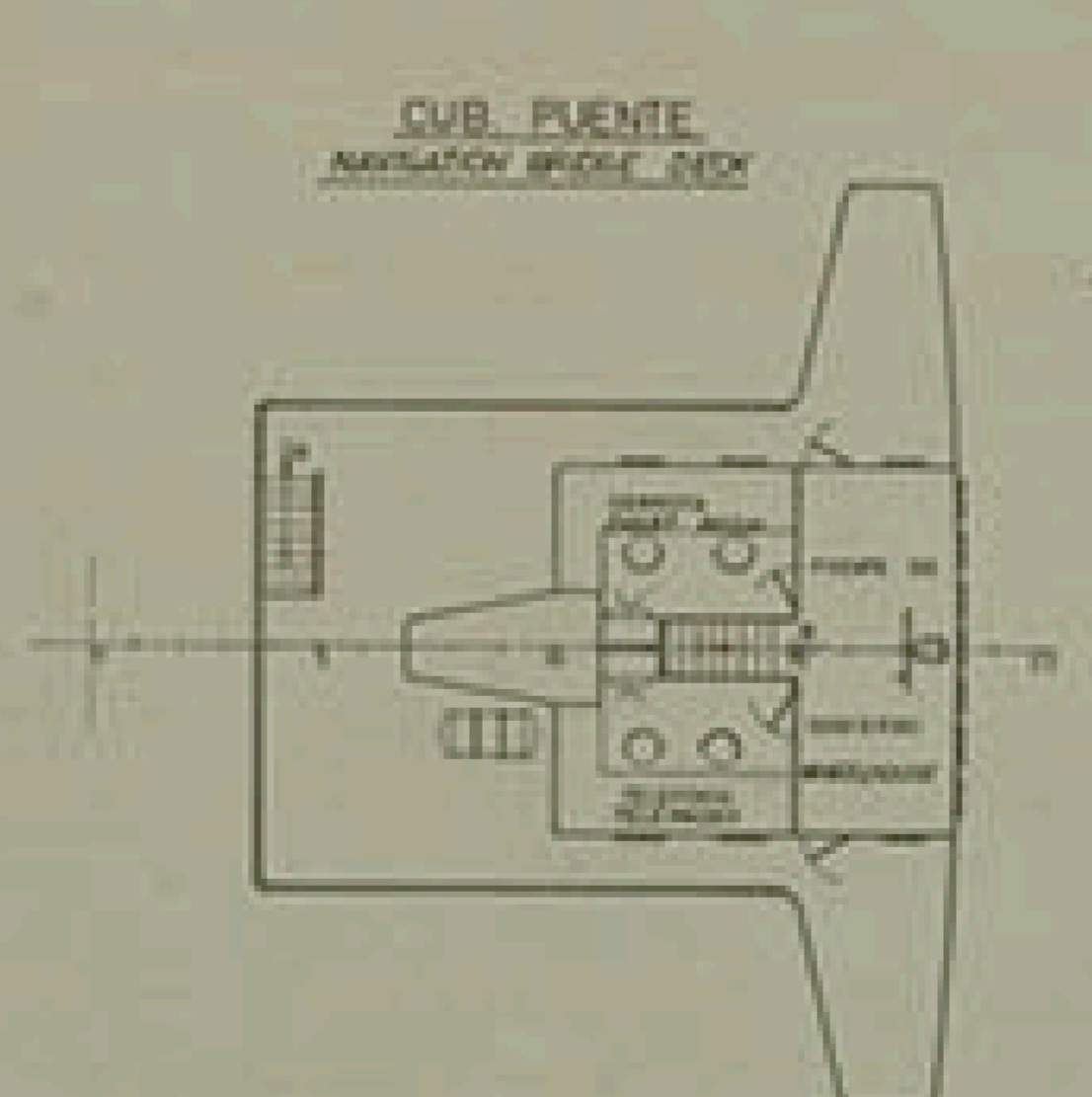
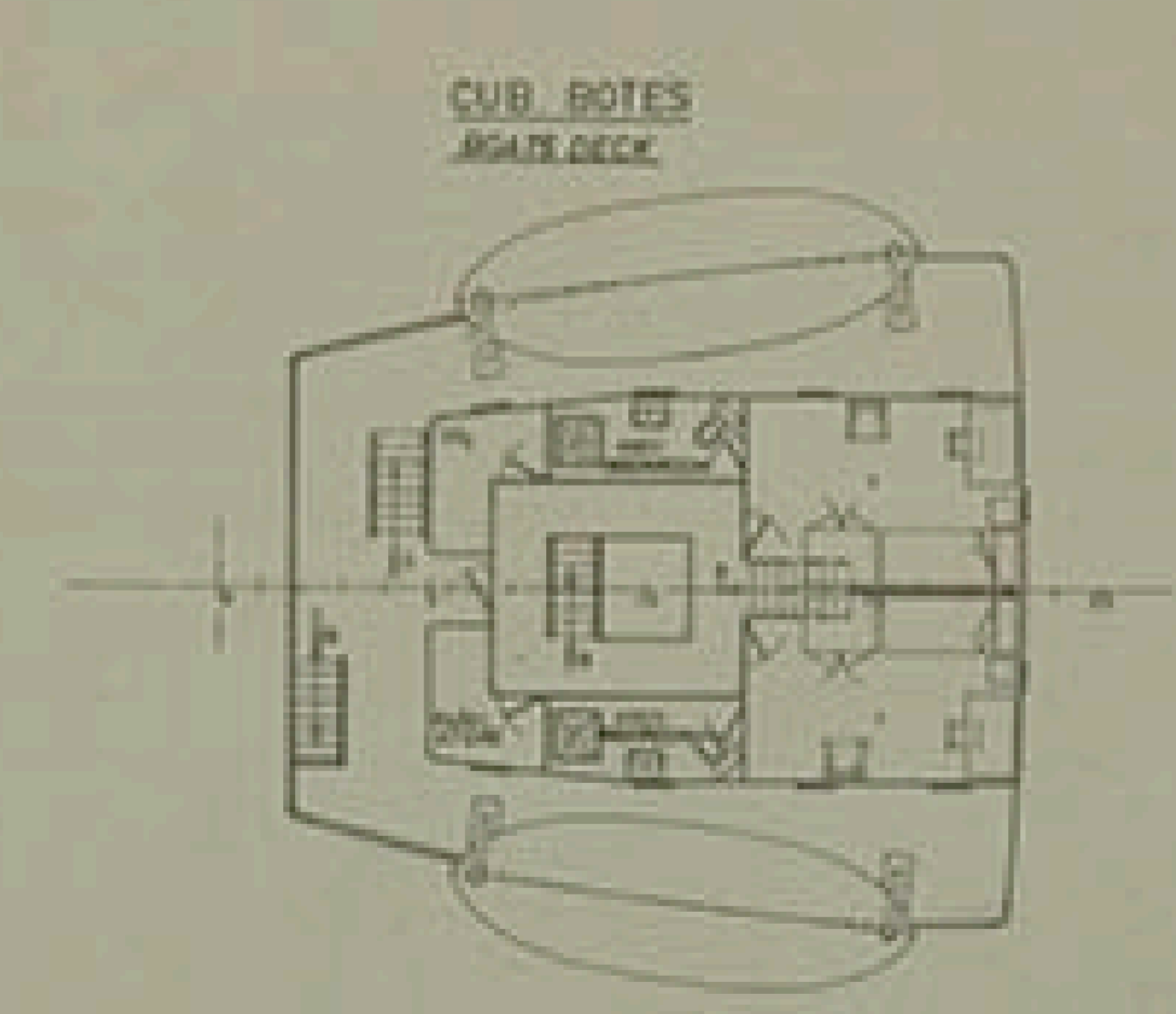
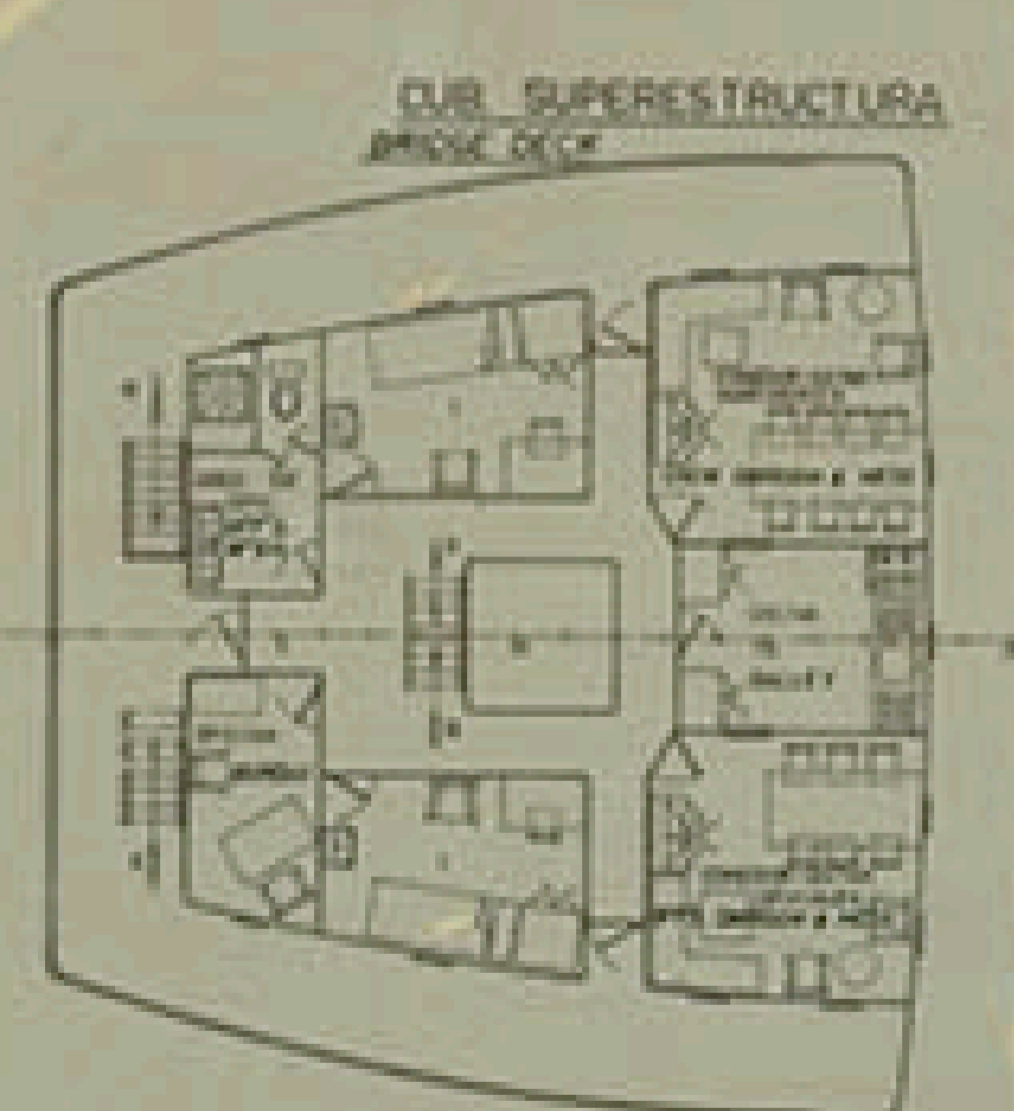


CANTONERAS SUPERIORES DE BARRIL (HATCH DECK BARRIL CANTONERS)
 CANTONERAS INFERIORES DE BARRIL (HATCH DECK BARRIL CANTONERS)
 CANTONERAS SUPERIORES DE BARRIL (HATCH DECK BARRIL CANTONERS)
 CANTONERAS INFERIORES DE BARRIL (HATCH DECK BARRIL CANTONERS)



CARACTERISTICAS PRINCIPALES

ESQUERA TOTAL	76,30 MTS
DE REGISTRO	76,30
ENTRE PERPENDICULARES	76,30
MANILA DE TRAZADO	11,50
PUNTA A LA CUB. PRINCIPAL	3,20
..... SUPERIOR	3,20
..... INFERIOR	3,20
CALADO MEDIO DE TRAZADO	3,20

PRINCIPAL PARTICULARS

LENGTH S.A.	76,30 MTS (250' 4 1/2")
REGISTER LENGTH	76,30 (250' 4 1/2")
LENGTH B.P.	76,30 (250' 4 1/2")
BREADTH WELDED	11,50 (37' 8 1/2")
DEPTH WELDED TO UPPER DECK	3,20 (10' 6 1/2")
DEPTH WELDED TO LOWER DECK	3,20 (10' 6 1/2")
DRAUGHT SUMMER LOAD	3,20 (10' 6 1/2")

BANOREX, S. A.

PROYECTO N° 1004	BUQUE PORTA CONTAINERS TIPO T-A 72,50 SA	DESTINO
PLANO N° 0104	DISPOSICION GENERAL	
ESCALA 1:100	GENERAL ARRANGEMENT	
N° DE HOJAS 2	PROYECTO	FECHA
HOJA N° 1	TECNOR (INGENIERO CONSULTOR)	ELABORADO

1004 T-A/72,50 SA