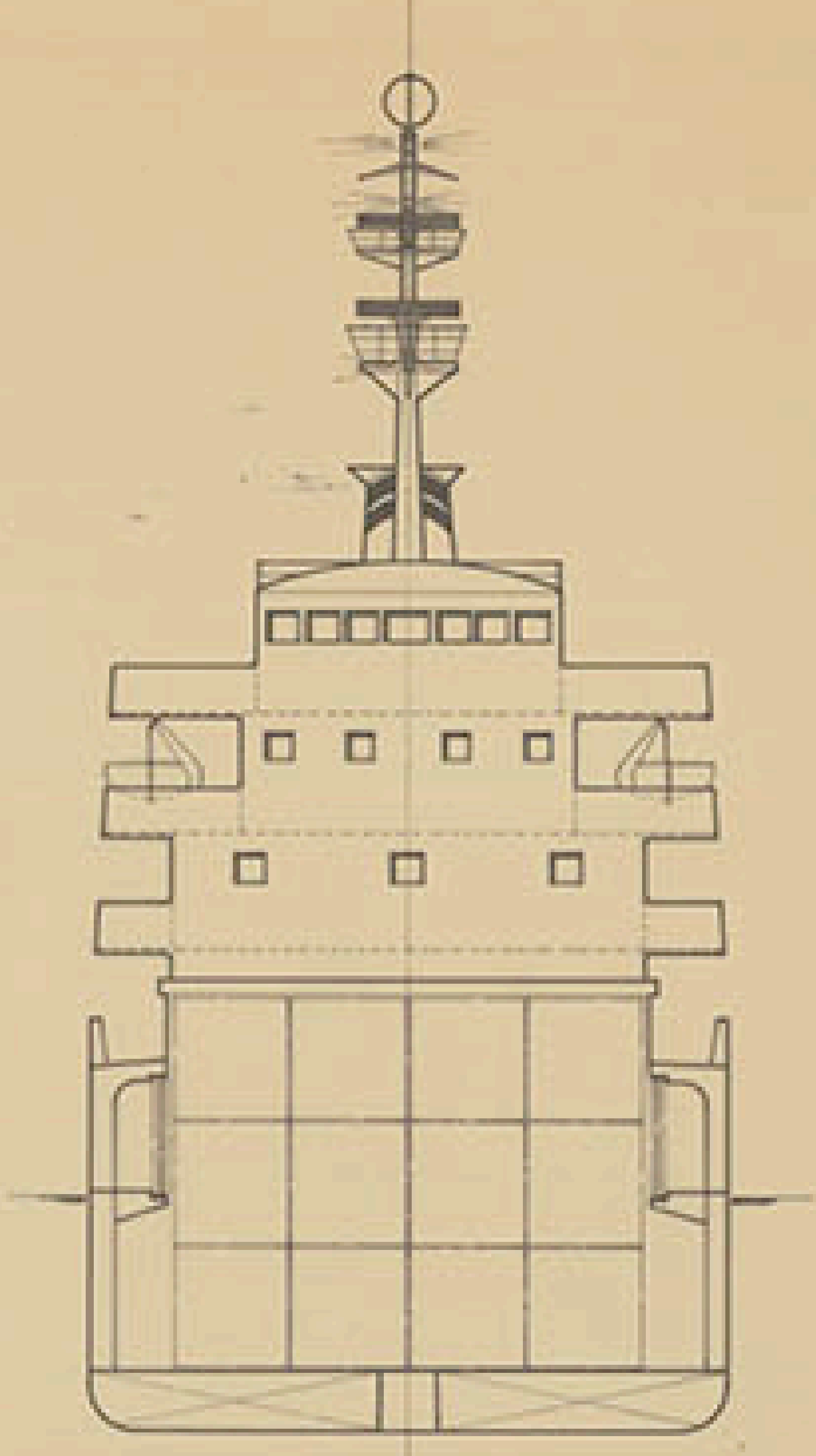


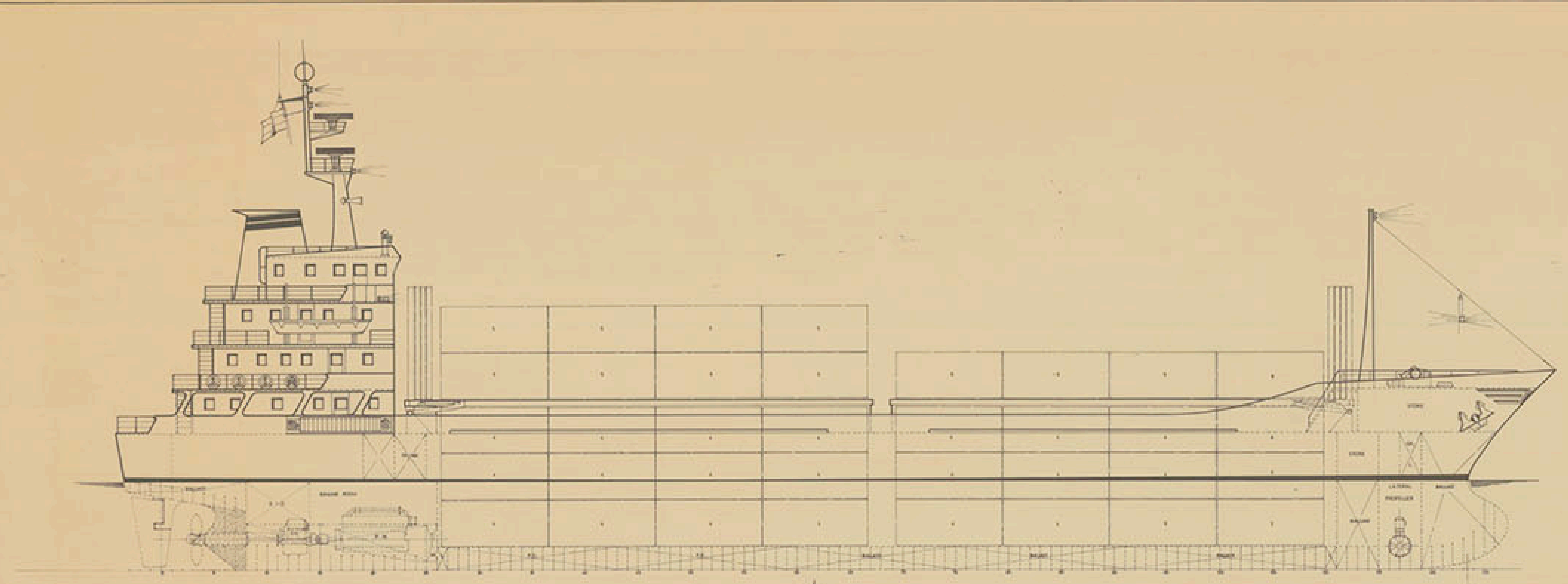


TRANSVERSE SECTION

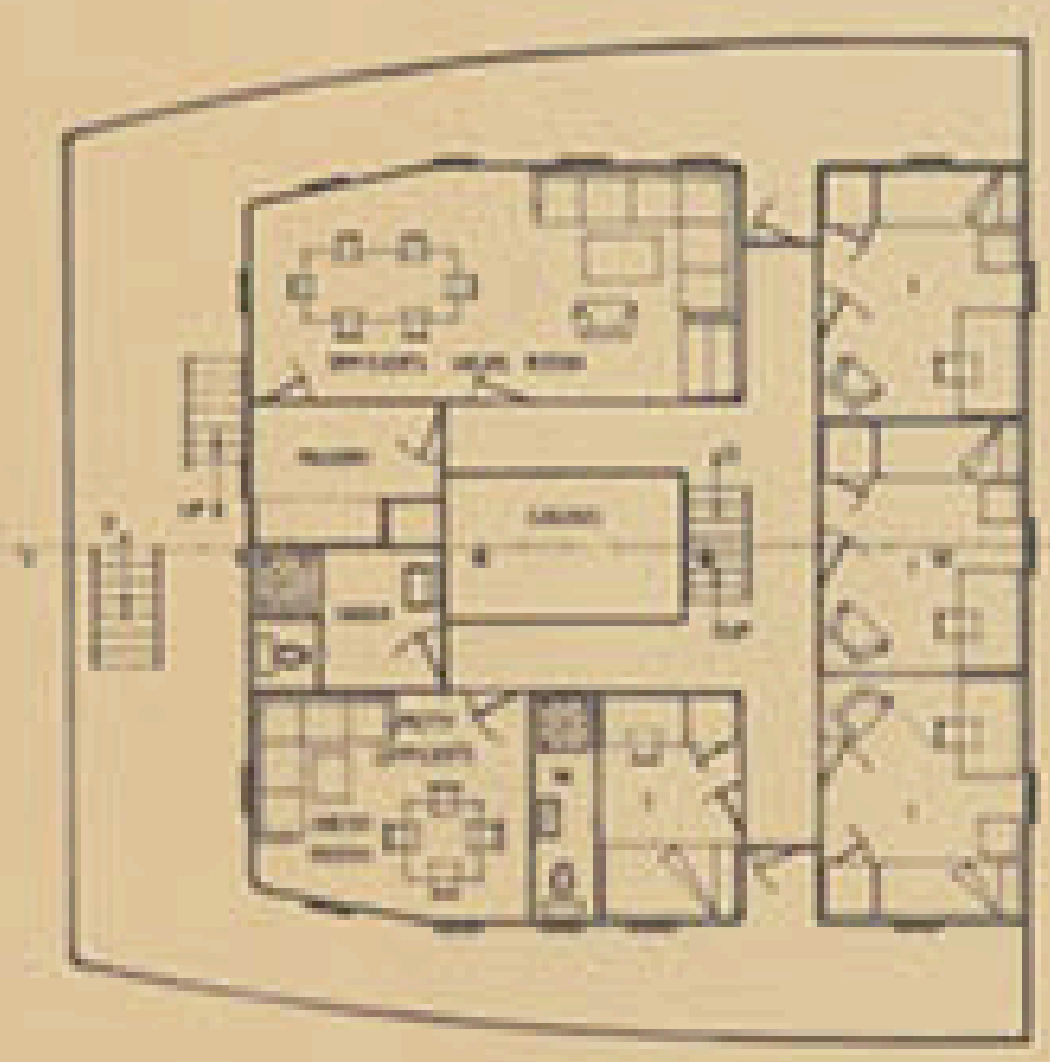


PRINCIPAL PARTICULARS

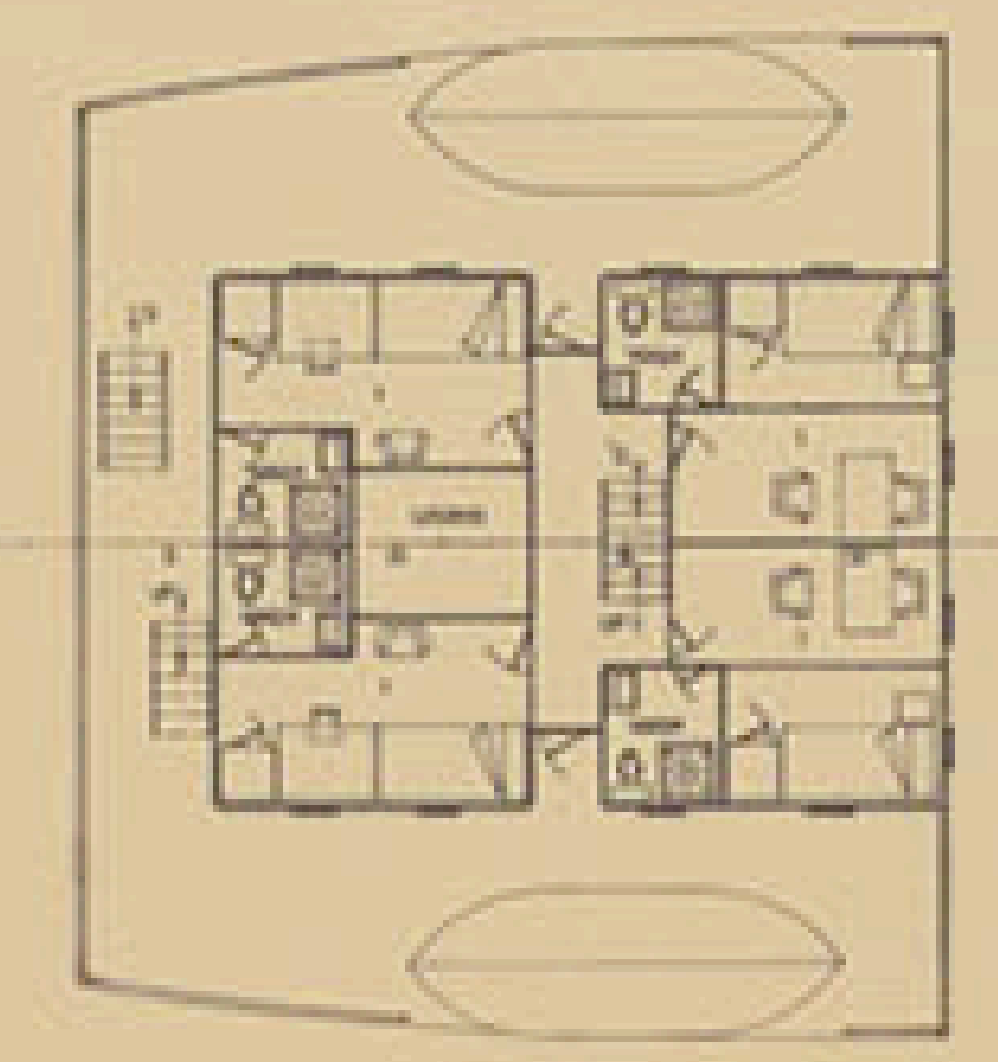
LENGTH O.A.	81.50 MTS
LENGTH B.P.	74.85
BREADTH MOULDED	13.50
DEPTH MOULDED TO UPPER DECK	7.60
DEPTH MOULDED TO LOWER DECK	5.10
DRAUGHT	5.00



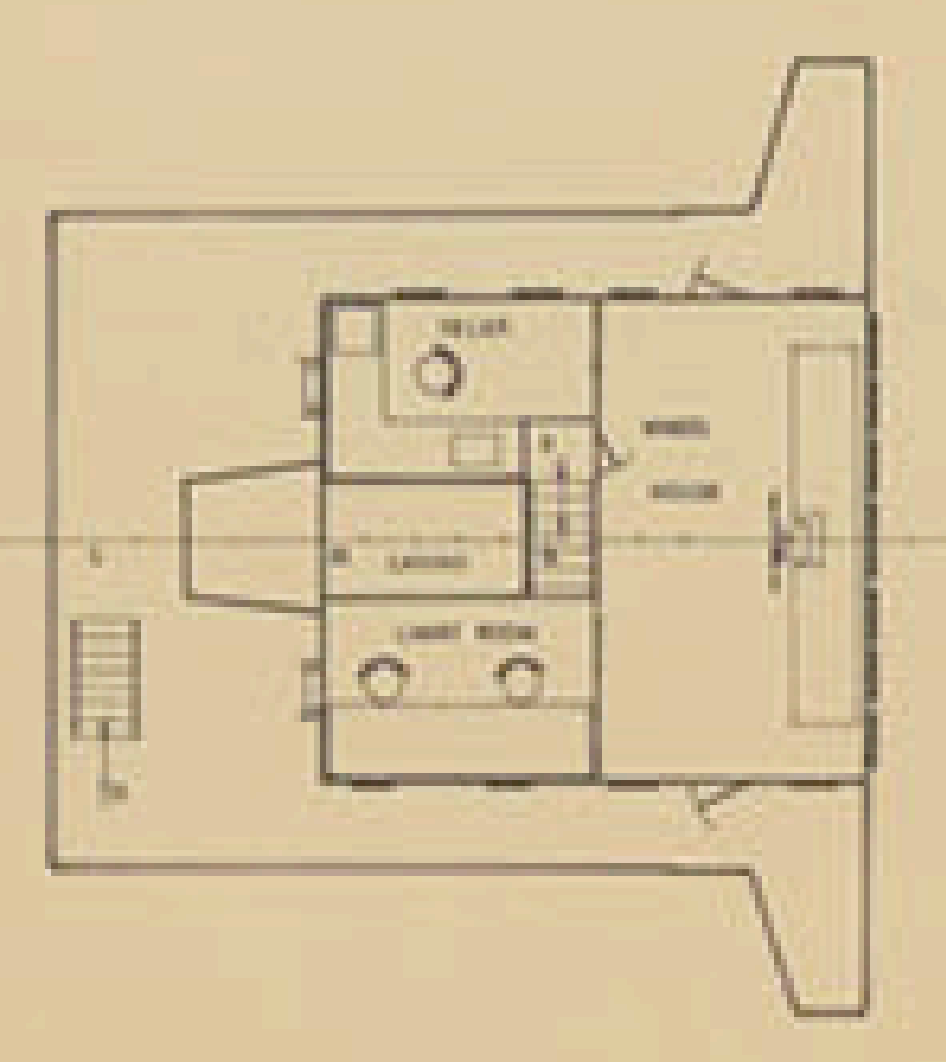
SUPERSTRUCTURE DECK



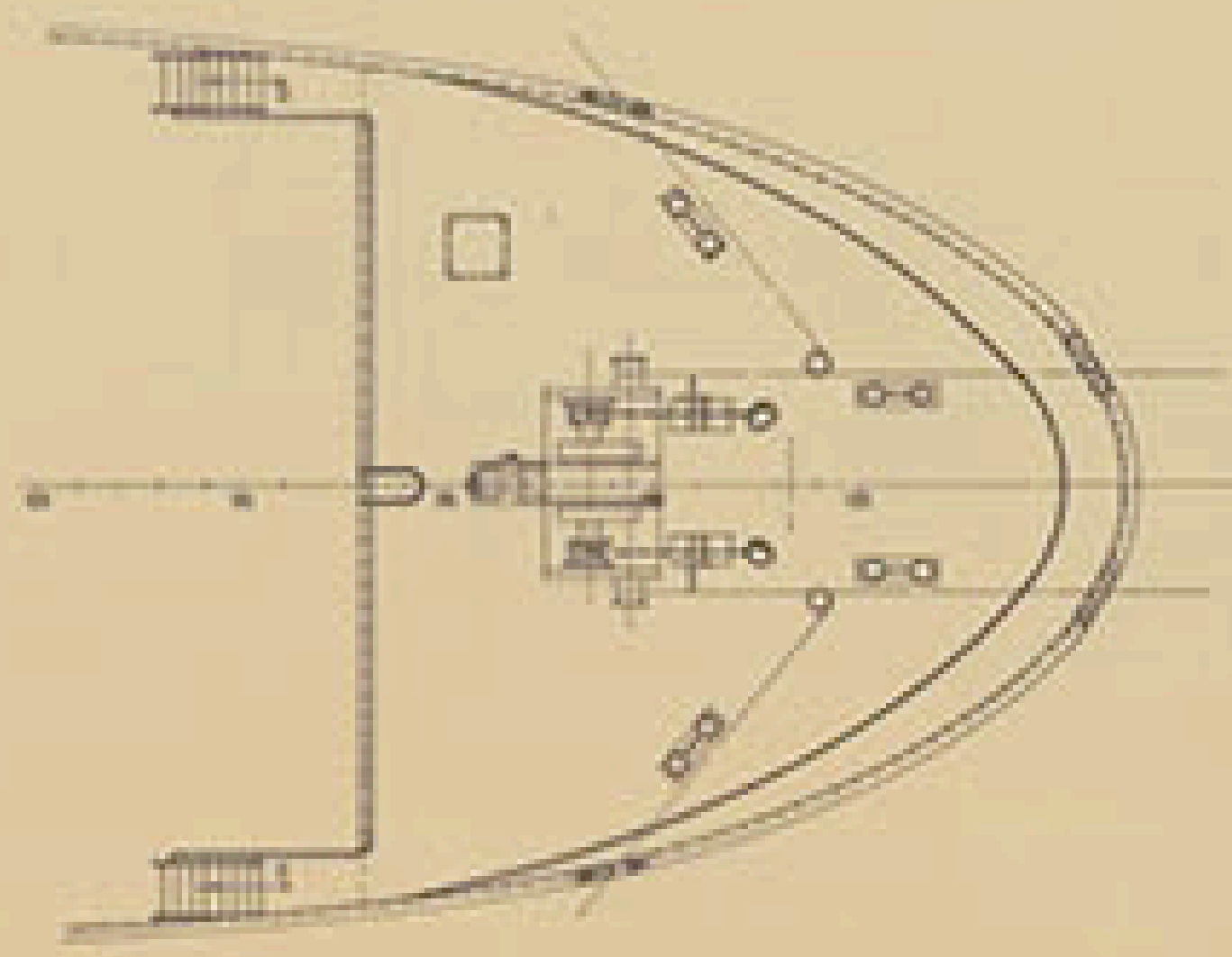
BOAT DECK



NAV. BRIDGE DECK



FORECASTLE DECK



TECNOR OMNIA TECNICA INDUSTRIAL Y NAVAL		
PROYECTO N.º	CONTAINER VESSEL	DESTINO
1/5480	OF 999 G.R.T. TYPE T-A 74 SA	
APROBADO	GENERAL ARRANGEMENT	
01/004		
ESCALA		
1:100		
N.º DE HOJAS		
2		
HOJA N.º		
1		
FEB. 1976		