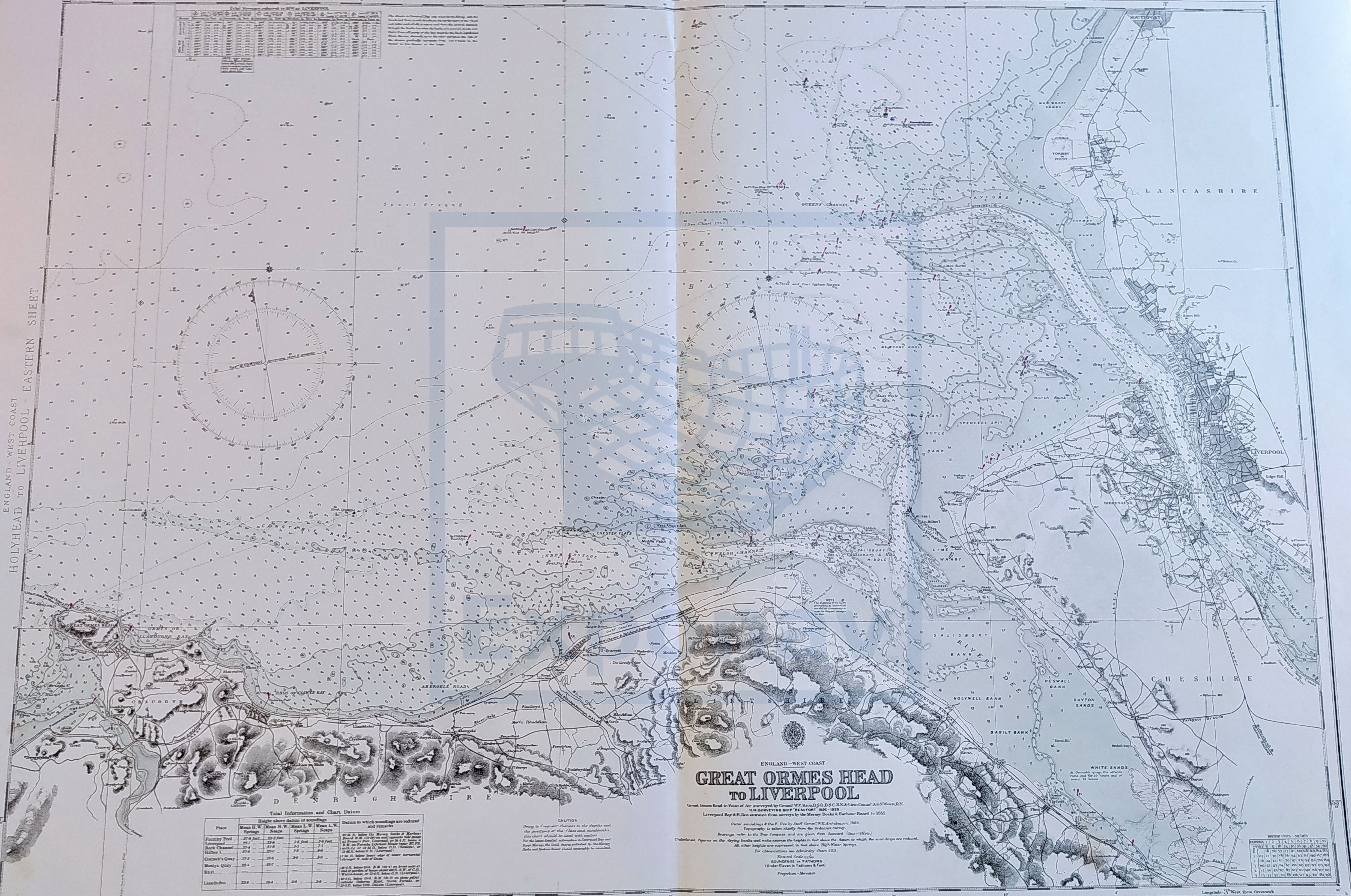
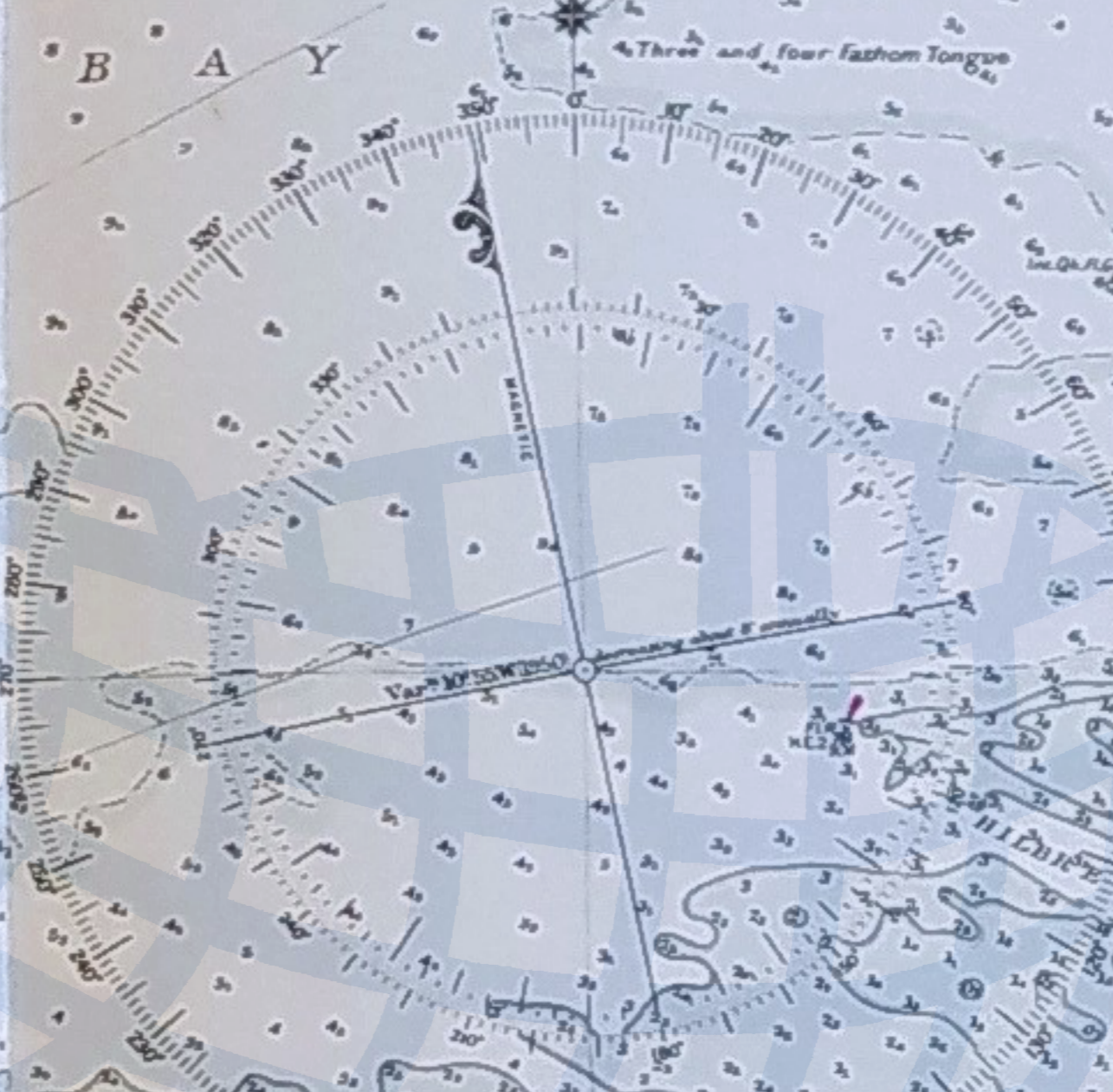


ENGLAND - WEST COAST
HOLYHEAD TO LIVERPOOL - EASTERN SHEET

Tidal Information and Chart Datum

Place	Mean H.W. Mean H.W. Mean L.W. Mean L.W.	Datum to which soundings are reduced and remarks		
	Spring	Neap		
Family Pool	27.4 feet	27.2 feet	24.6 feet	27.4 ft. below the Mersey Dock & Harbour Board B.M. (1907) on rocky outcrop at end of pier.
Liverpool	26.7	26.6	24.0	26.7 ft. below the Mersey Dock & Harbour Board B.M. (1907) on rocky outcrop at end of pier.
Rock Channel	27.4	27.0	24.0	27.4 ft. below the Mersey Dock & Harbour Board B.M. (1907) on rocky outcrop at end of pier.
Hilton L.	27.4	27.0	24.0	27.4 ft. below the Mersey Dock & Harbour Board B.M. (1907) on rocky outcrop at end of pier.
Quays Quay	27.3	26.6	24.0	27.3 ft. below the Mersey Dock & Harbour Board B.M. (1907) on rocky outcrop at end of pier.
Monty's Quay	26.4	25.7	24.0	26.4 ft. below the Mersey Dock & Harbour Board B.M. (1907) on rocky outcrop at end of pier.
Blyth	—	—	—	—
Liverpool	23.9	23.4	20.4	23.9 ft. below the Mersey Dock & Harbour Board B.M. (1907) on rocky outcrop at end of pier.



ENGLAND - WEST COAST
GREAT ORMES HEAD TO LIVERPOOL

Great Ormes Head to Point of Air surveyed by Comdr. W.V. Rice, D.S.O., D.S.C., R.N., & Lieut. Comdr. A.G. West, R.N., R.M. SURVEYING SHIP "BEAUFORT" 1888-1892.
Liverpool Bay & R. Mersey surveyed from surveys by the Mersey Dock & Harbour Board in 1952.

CAUTION
Owing to frequent changes in the depths and the positions of the lights and buoys, this chart should be used with caution.
For the latest detailed information on Liverpool Bay and River Mersey, the local charts published by the Mersey Dock and Harbour Board should necessarily be consulted.
Outer soundings & the R. Mersey by Staff Comdr. R.E. Archibald, 1889.
Topography is taken chiefly from the Ordnance Survey.
Bearings refer to the True Compass and are given from Seward (1847-1264).
Underlined figures on the drying banks and rocks express the heights in feet above the datum to which the soundings are reduced.
All other heights are expressed in feet above High Water Springs.
For abbreviations see Admiralty Chart 5011.
Natural Scale 1:2000
SOUNDINGS in FATHOMS (Under Lines in Fathoms & Feet)
Projection - Mercator

Tidal Information and Chart Datum

Place	Mean H.W. Mean H.W. Mean L.W. Mean L.W.	Datum to which soundings are reduced and remarks		
	Spring	Neap		
Family Pool	27.4 feet	27.2 feet	24.6 feet	27.4 ft. below the Mersey Dock & Harbour Board B.M. (1907) on rocky outcrop at end of pier.
Liverpool	26.7	26.6	24.0	26.7 ft. below the Mersey Dock & Harbour Board B.M. (1907) on rocky outcrop at end of pier.
Rock Channel	27.4	27.0	24.0	27.4 ft. below the Mersey Dock & Harbour Board B.M. (1907) on rocky outcrop at end of pier.
Hilton L.	27.4	27.0	24.0	27.4 ft. below the Mersey Dock & Harbour Board B.M. (1907) on rocky outcrop at end of pier.
Quays Quay	27.3	26.6	24.0	27.3 ft. below the Mersey Dock & Harbour Board B.M. (1907) on rocky outcrop at end of pier.
Monty's Quay	26.4	25.7	24.0	26.4 ft. below the Mersey Dock & Harbour Board B.M. (1907) on rocky outcrop at end of pier.
Blyth	—	—	—	—
Liverpool	23.9	23.4	20.4	23.9 ft. below the Mersey Dock & Harbour Board B.M. (1907) on rocky outcrop at end of pier.

BRITISH UNITS - METRES

1	1.8	1.8	1.8	1.8	1.8	1.8	1.8	1.8	1.8
2	3.7	3.7	3.7	3.7	3.7	3.7	3.7	3.7	3.7
3	5.5	5.5	5.5	5.5	5.5	5.5	5.5	5.5	5.5
4	7.3	7.3	7.3	7.3	7.3	7.3	7.3	7.3	7.3
5	9.1	9.1	9.1	9.1	9.1	9.1	9.1	9.1	9.1
6	10.9	10.9	10.9	10.9	10.9	10.9	10.9	10.9	10.9
7	12.7	12.7	12.7	12.7	12.7	12.7	12.7	12.7	12.7
8	14.5	14.5	14.5	14.5	14.5	14.5	14.5	14.5	14.5
9	16.3	16.3	16.3	16.3	16.3	16.3	16.3	16.3	16.3
10	18.1	18.1	18.1	18.1	18.1	18.1	18.1	18.1	18.1