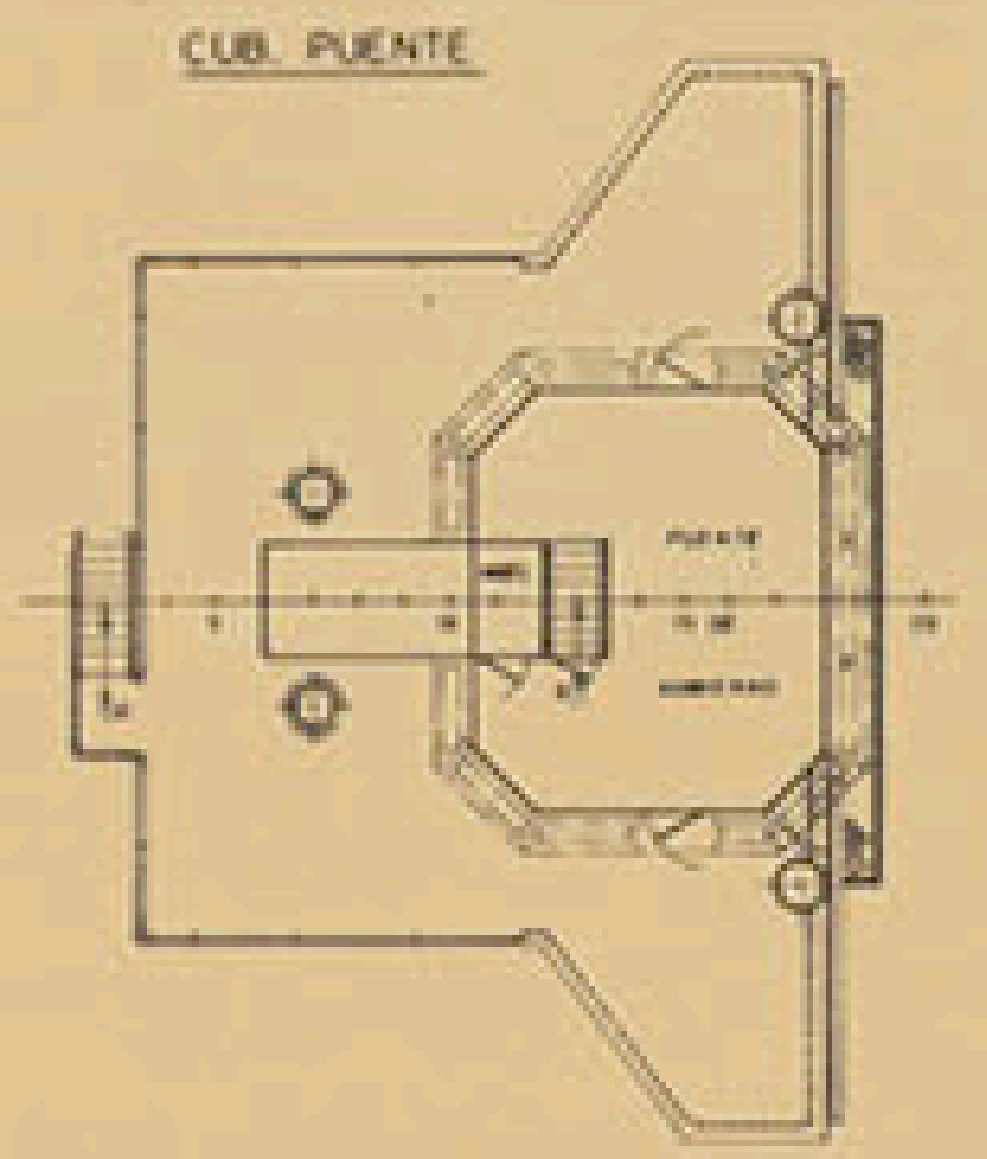
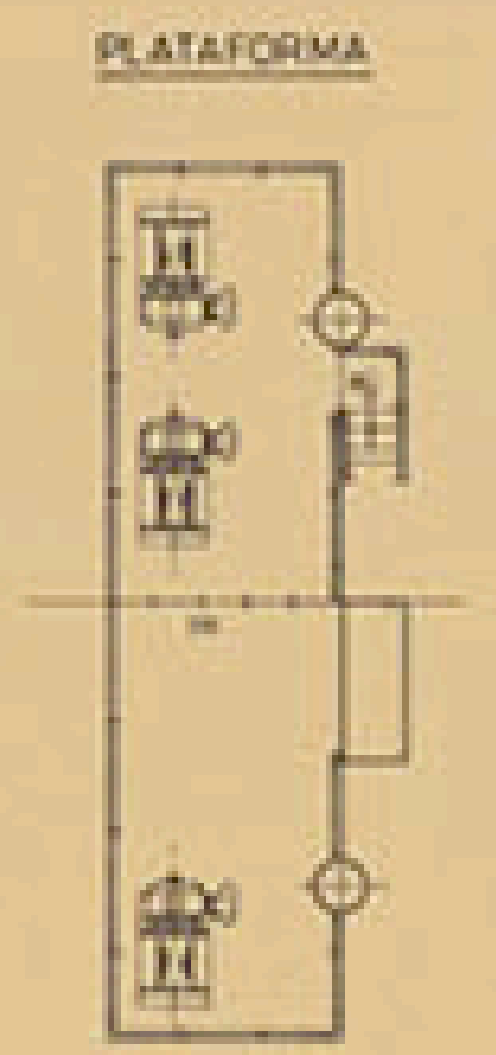
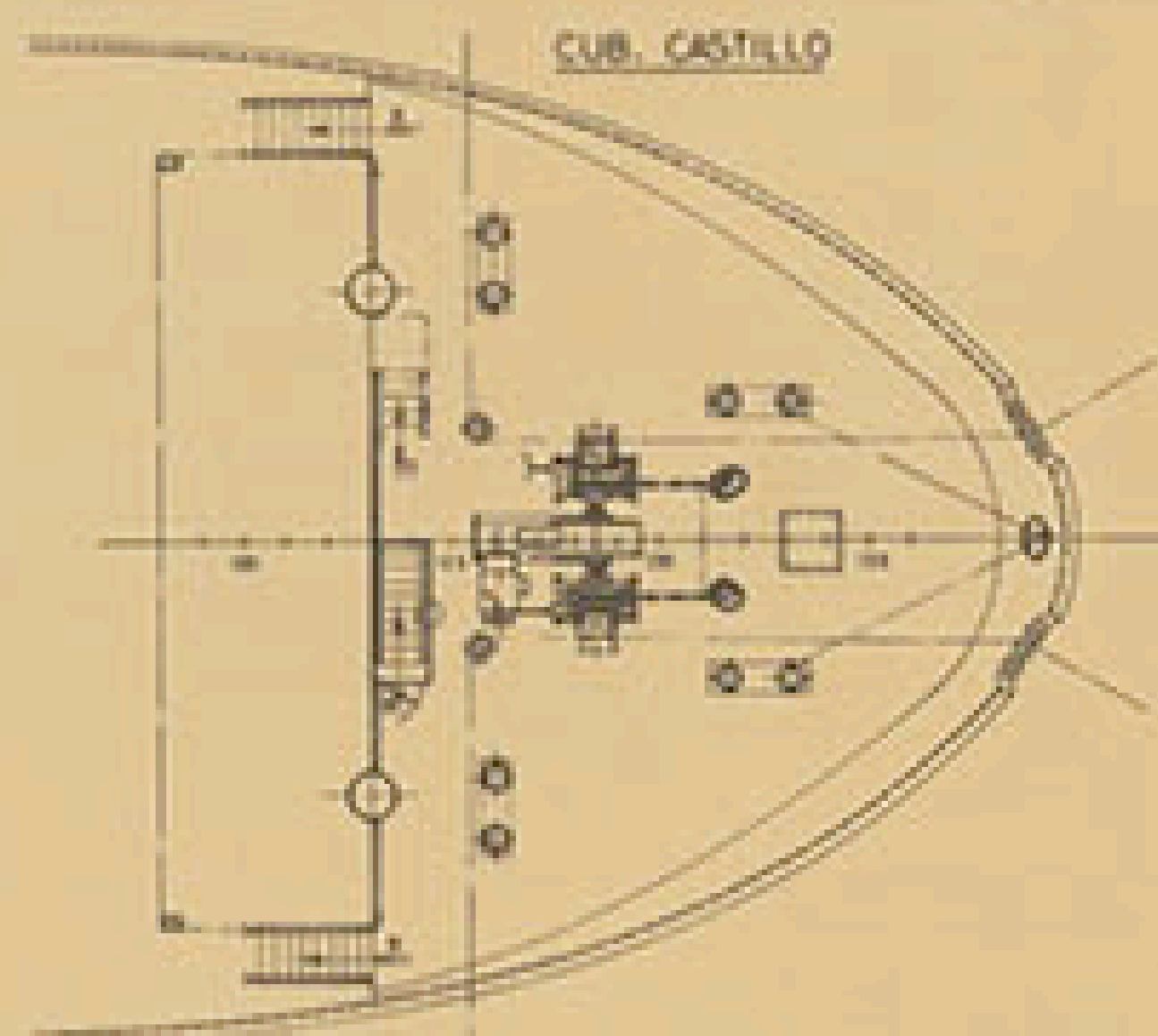
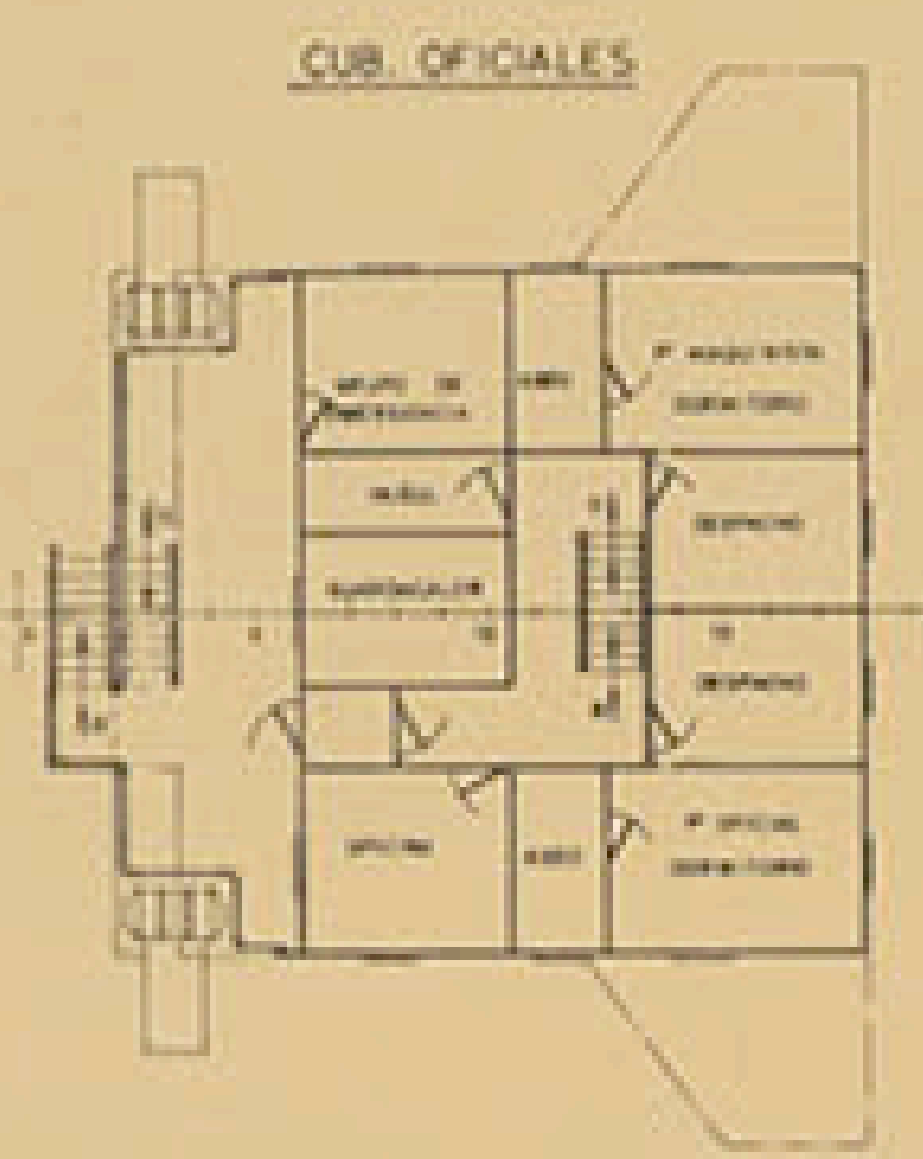
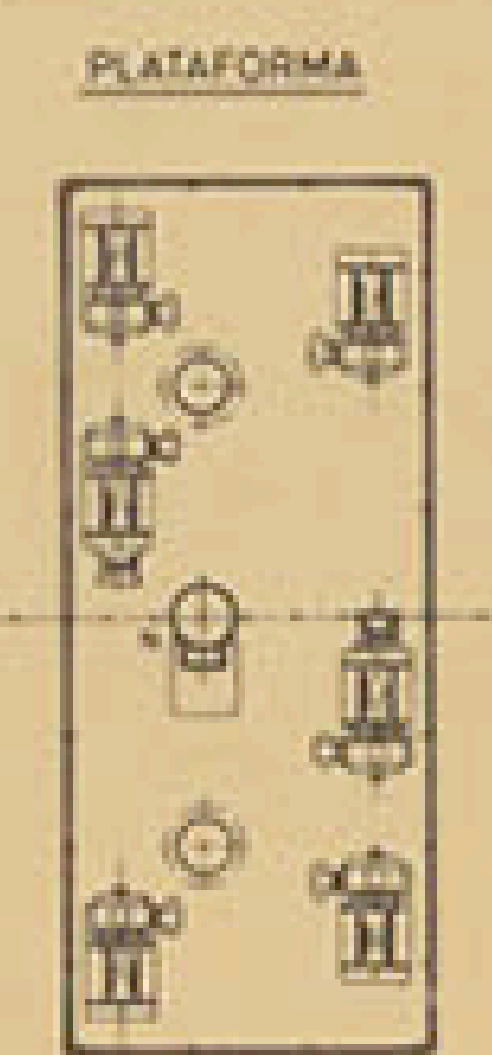
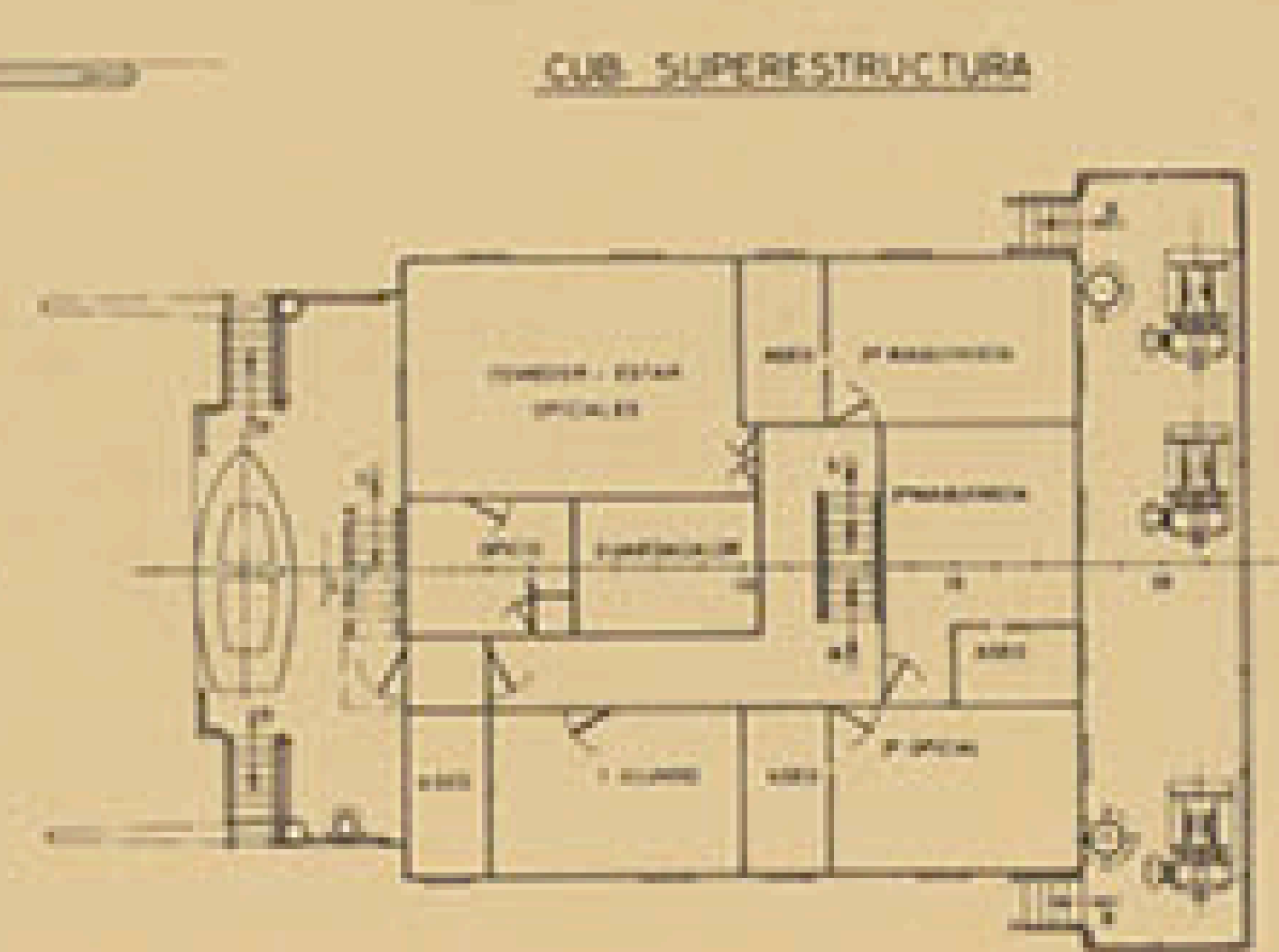
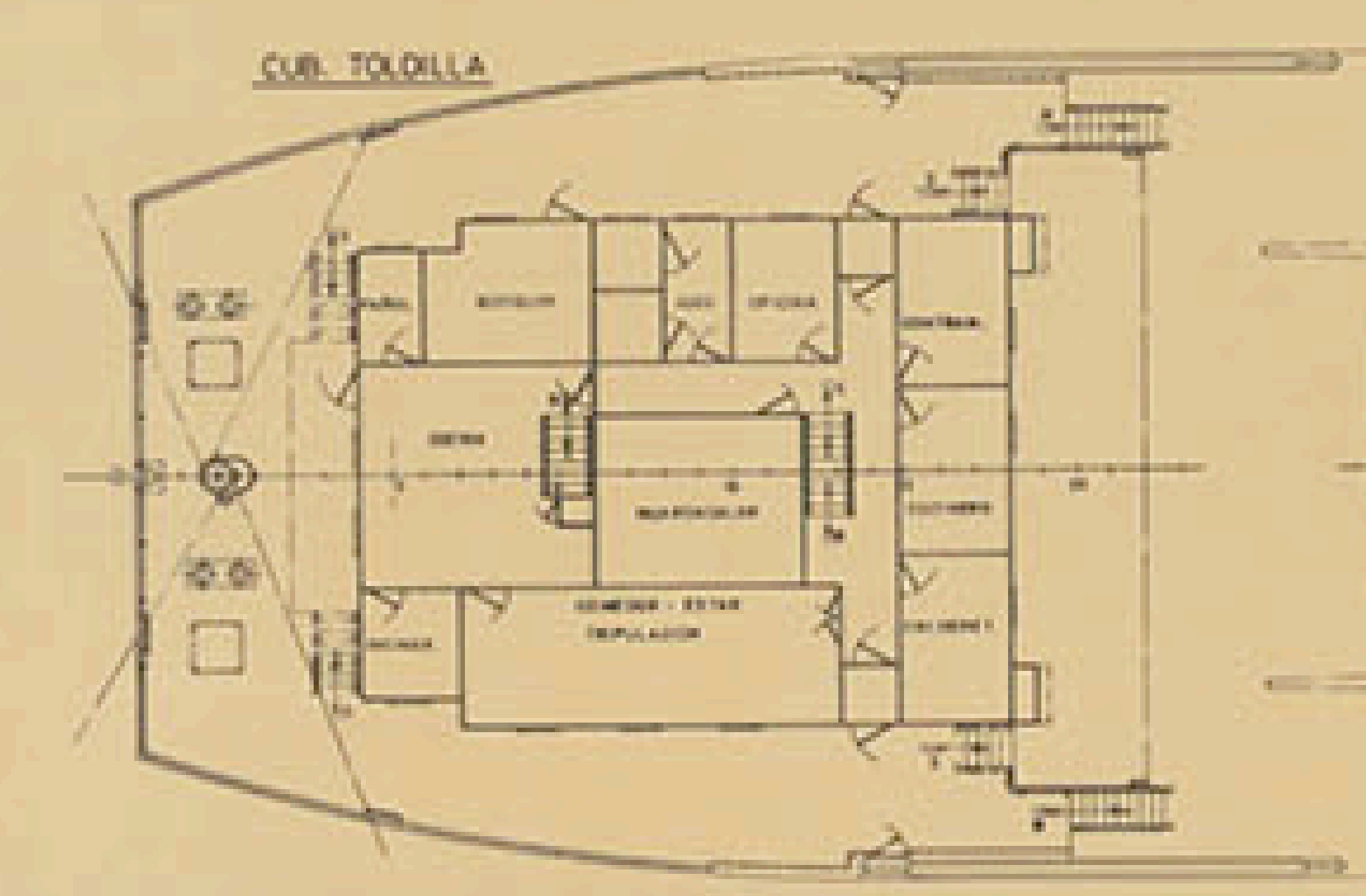


PERFIL

SECCION

CARACTERISTICAS PRINCIPALES

ESTERA TOTAL 2800 MTS
DE REGISTRO 800
ENTRE PERPENDICULARES 80M
MANGA DE TRAZADO 14.6
PUNTA A LA CUB. SHELTER 4.8M
..... PRINCIPAL 4.51
CALADO MEDIO DE TRAZADO 4.51



TECNOR OFICINA TECNICA INDUSTRIAL Y NAVAL		
PROYECTO N°	BUQUE DE CARGA	DESTINO
1/0 821	MULTIPURPOSE DE 2800TPM	
PLANO N°	DISEÑO GENERAL	
0004		
ESCALA	TECNA	
1:300		
FECHA	MAYO 1982	