

N° 2 HOLD  
 $V = 2046 \text{ m}^3 \sim 72,500 \text{ cu ft (GRAN)}$   
 $V = 1875 \text{ m}^3 \sim 66,700 \text{ cu ft (GRAN)}$

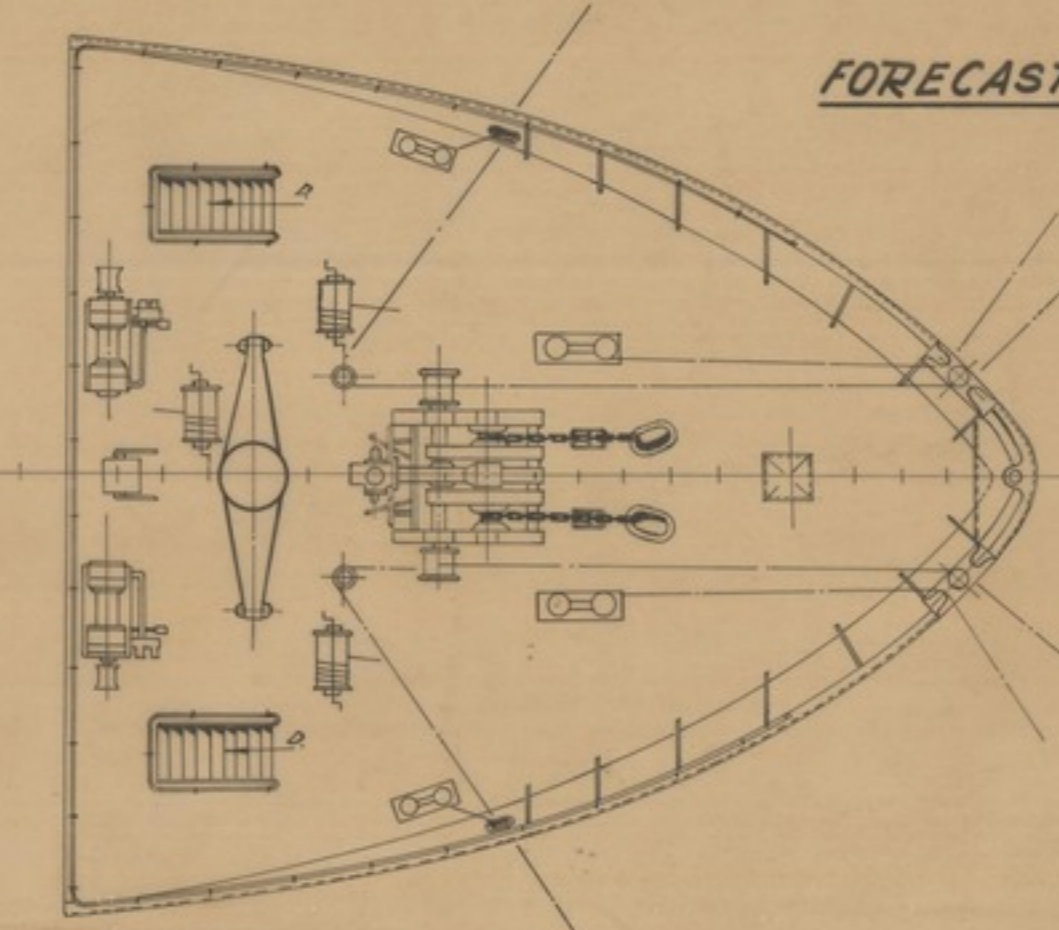
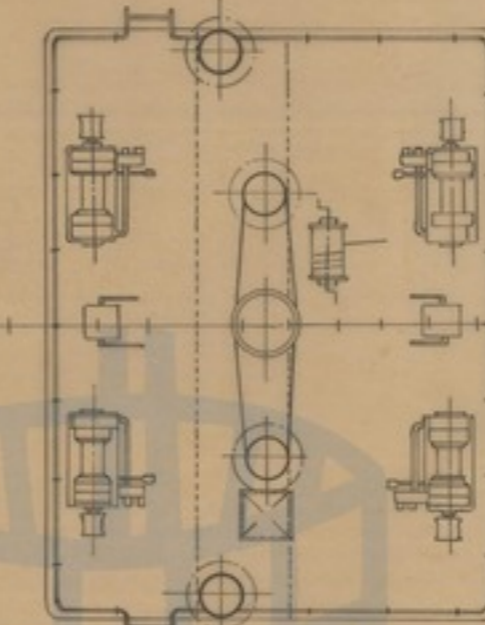
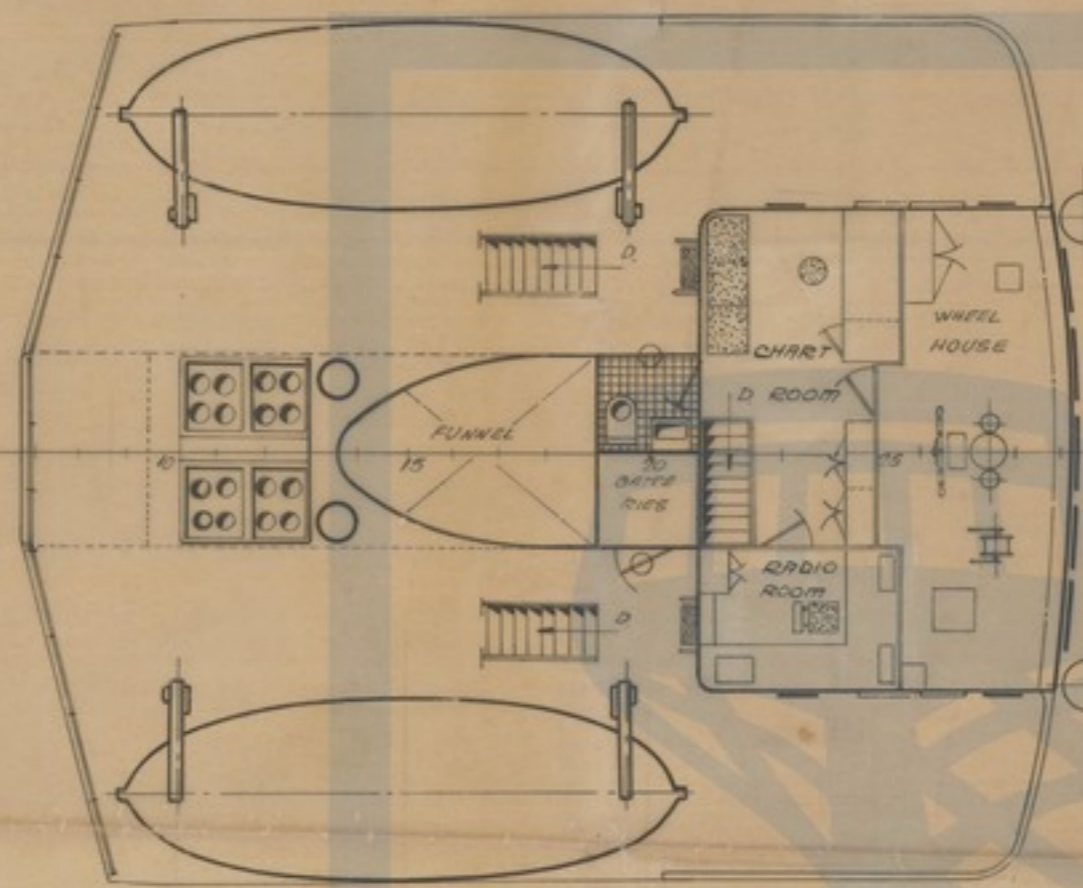
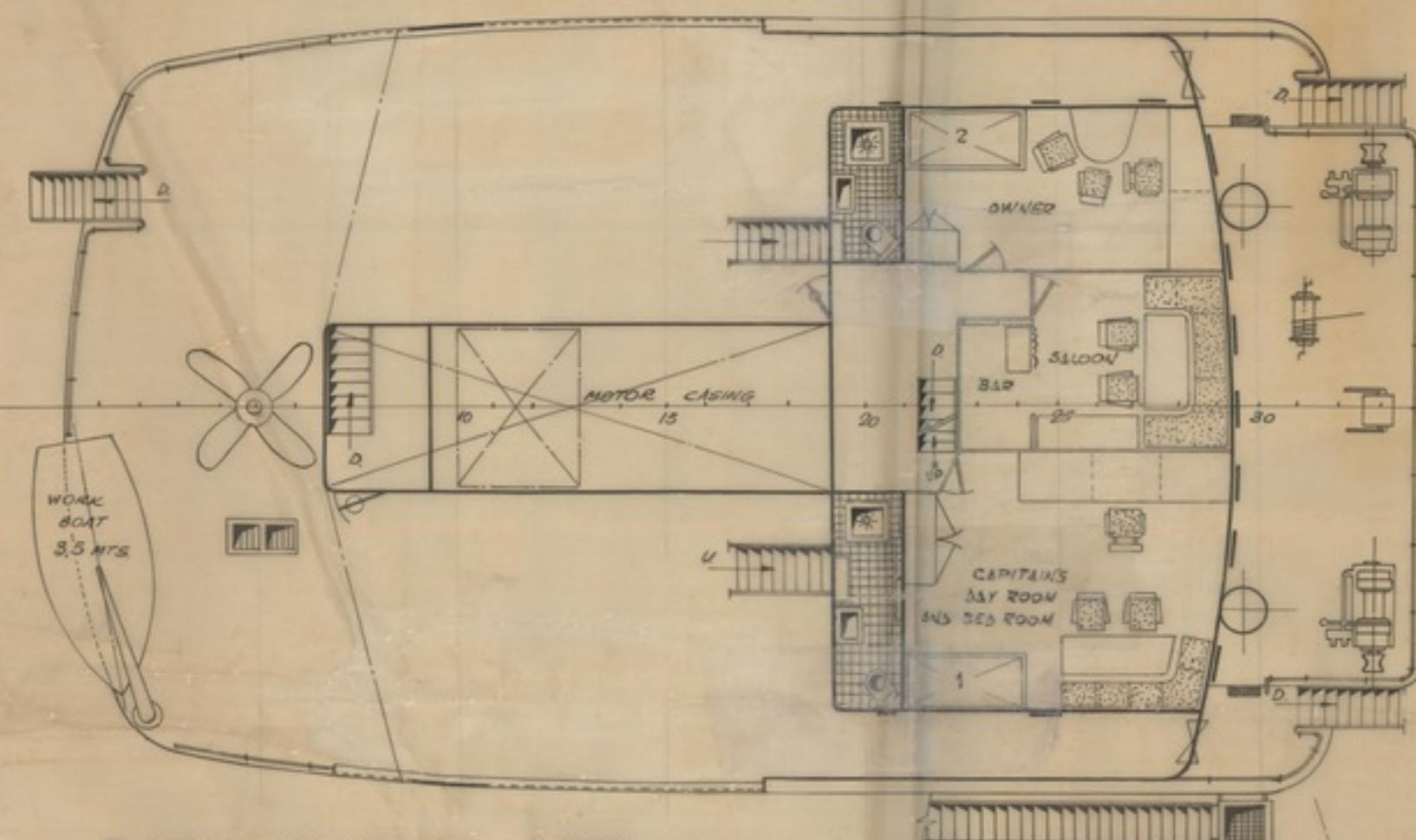
N° 1 HOLD  
 $V = 1368 \text{ m}^3 \sim 47,952 \text{ cu ft (GRAN)}$   
 $V = 1325 \text{ m}^3 \sim 46,825 \text{ cu ft (BALD)}$

BOAT DECK

BRIDGE DECK

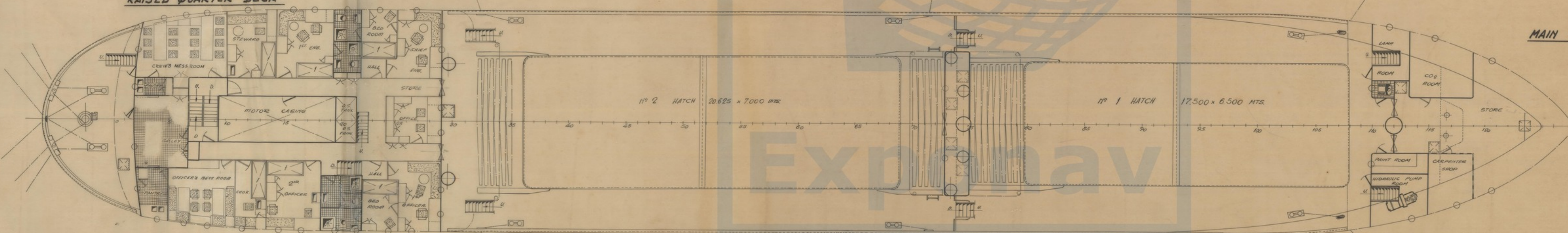
WINCH'S PLATFORM

FORECASTLE DECK

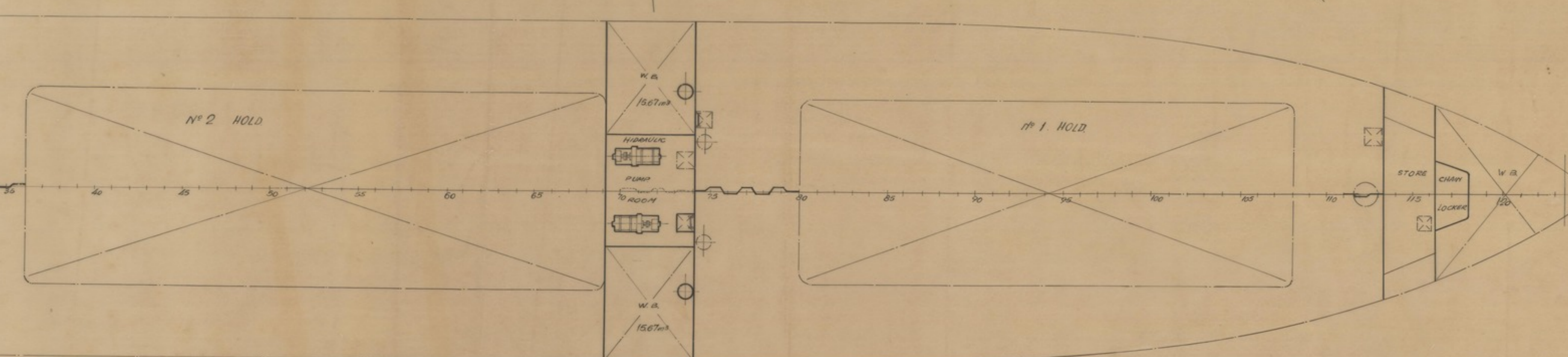
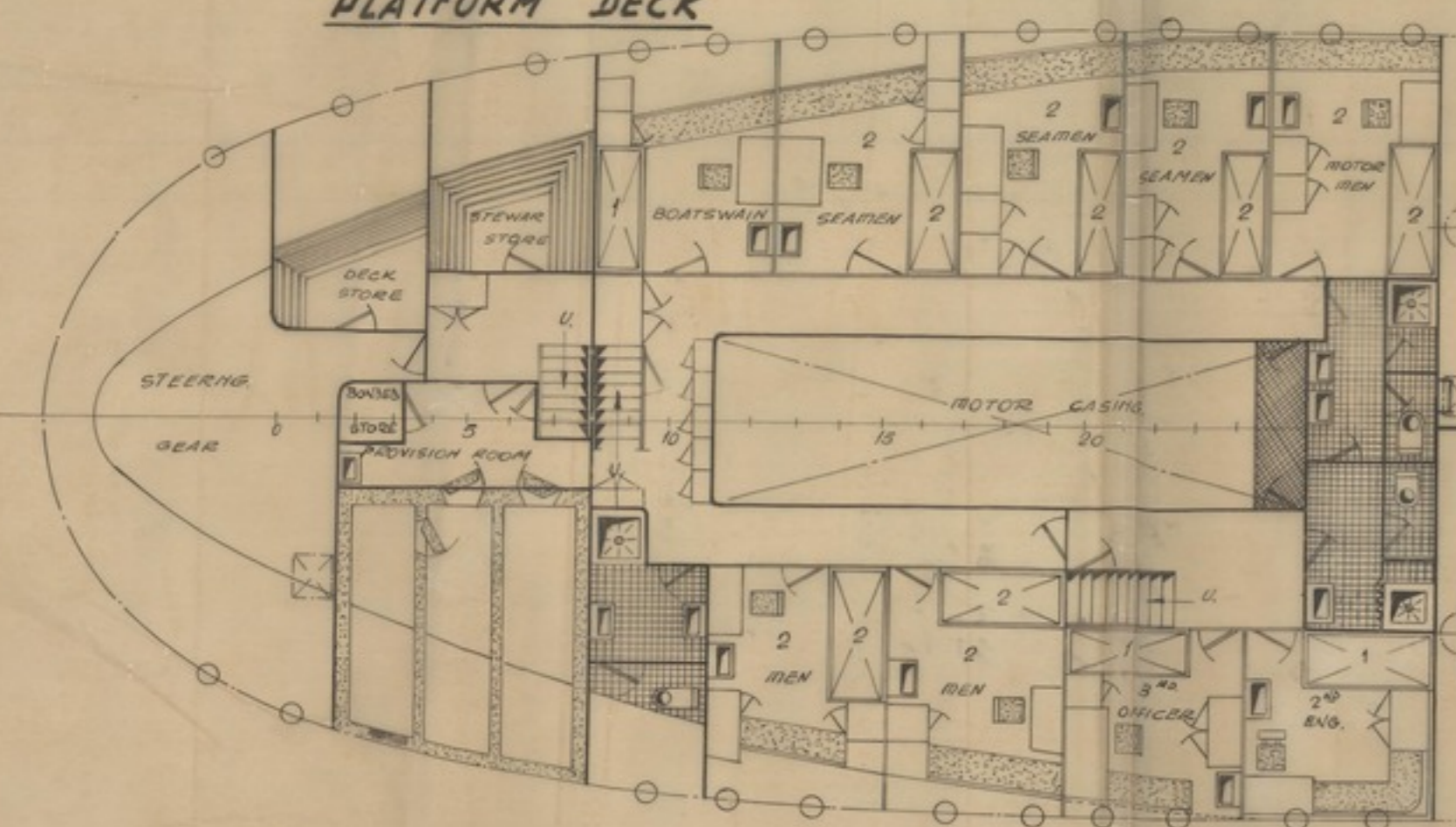


RAISED QUARTER DECK

MAIN DECK

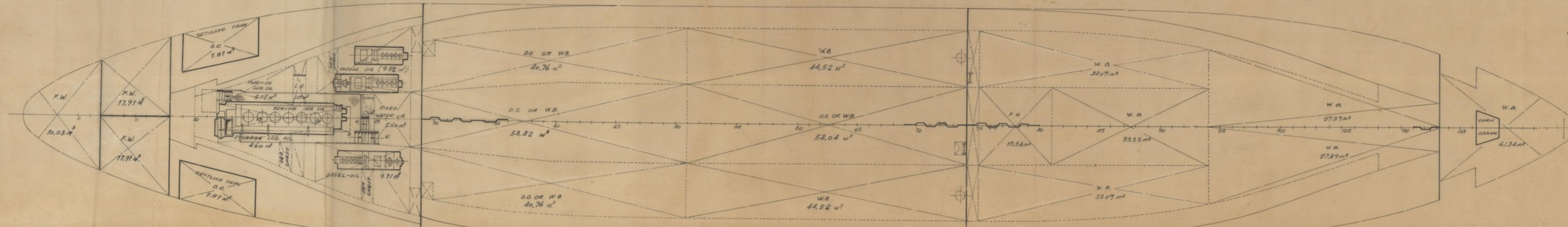


PLATFORM DECK



**MAIN CHARACTERISTICS**

LENGTH OVERALL	84.12 MTS
LENGTH BETWEEN PERP	72.00 "
BREADTH MOULDED	12.00 "
DEPTH	5.40 676 "
DRAUGHT WITH TANKER FREIGHTERS	5.15 "
DRAUGHT	2.400 MTR. TANK
HOLDS - TOTAL BALE	5,200 CUB M - 182,705 CU FT
HOLDS - TOTAL GRAY	3,804 CU M - 134,192
FRESH WATER	60.71 M <sup>3</sup>
DIESEL OIL	244.00 "
BALLAST (INCLUDING 2.0 OR BALLAST TANKS)	232.32 "
G. M. T. MAXIMUM	1750 G.M.T.
TRIAL SPEED	12.5 KNOTS



HOLD

1 MODIFICACIONES PARA REDUCIR ARQUEO

8-10-53

CALCULADO	FECHA 28-5-53	CUBO	...
DISEÑADO	BOQUE N° 161	SALIDA	...
COMPROBADO	...	SEÑALA	...

SHIP NUMBER 161  
 LENGTHENED 5 METERS  
 GENERAL ARRANGEMENT.

PR-10104/