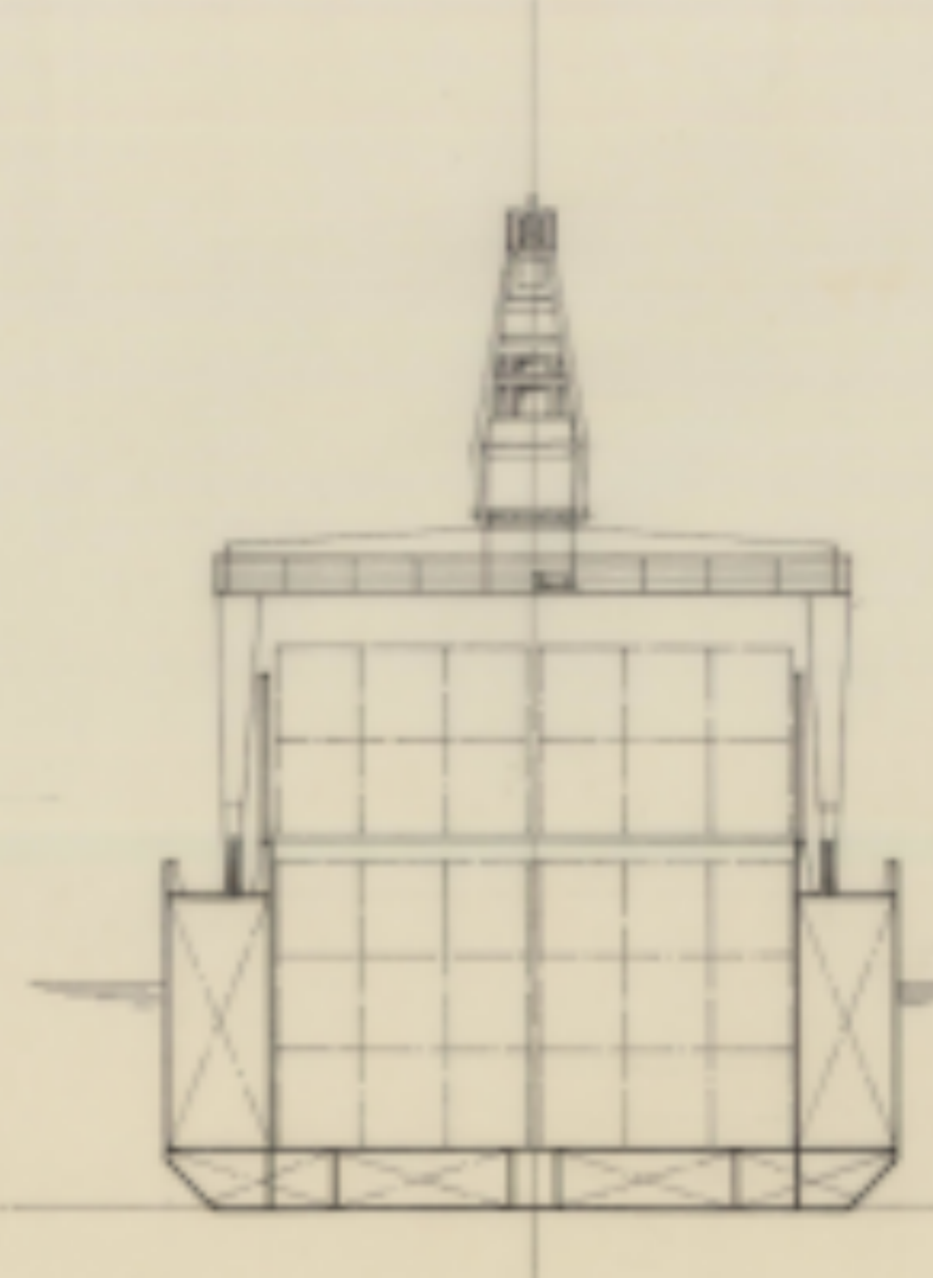
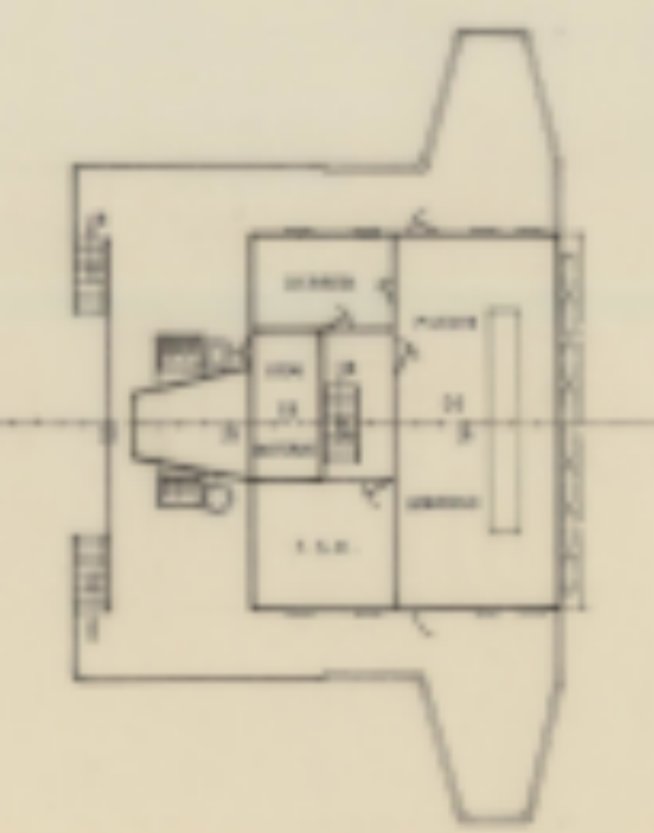


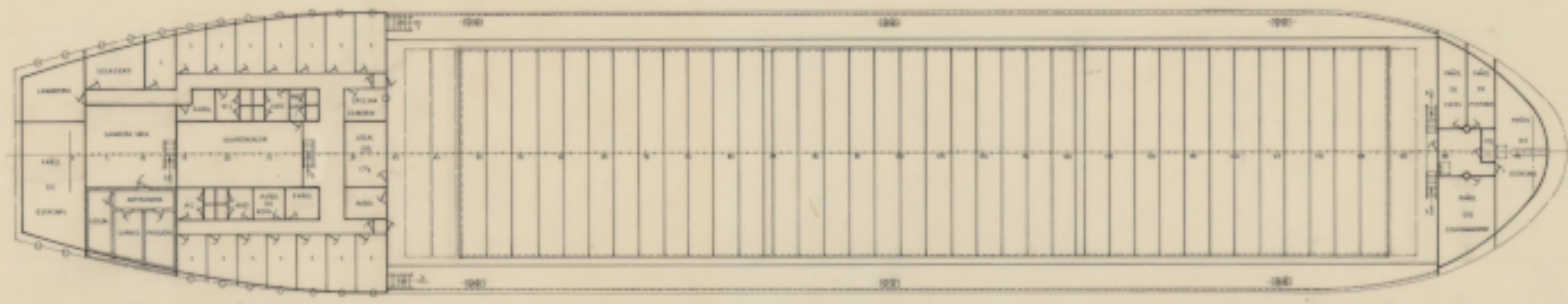
SECCION TRANSVERSAL



CUB. PUENTE



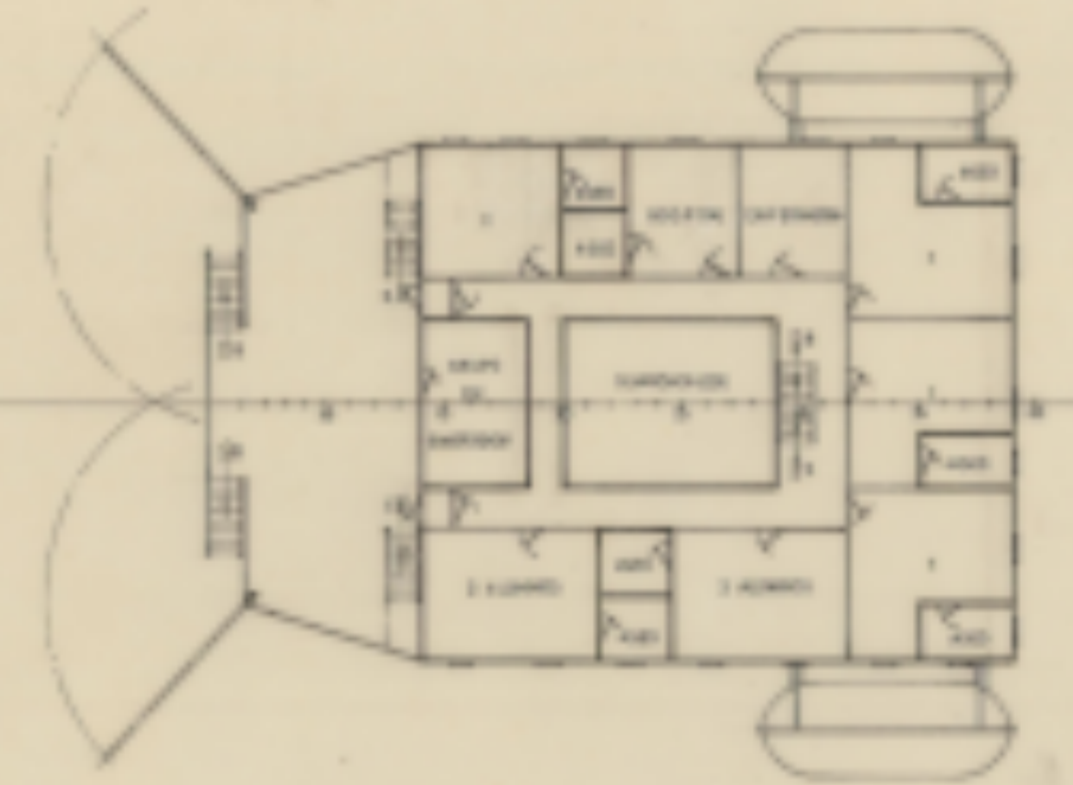
CUB. PRINCIPAL



CUB. CASTILLO



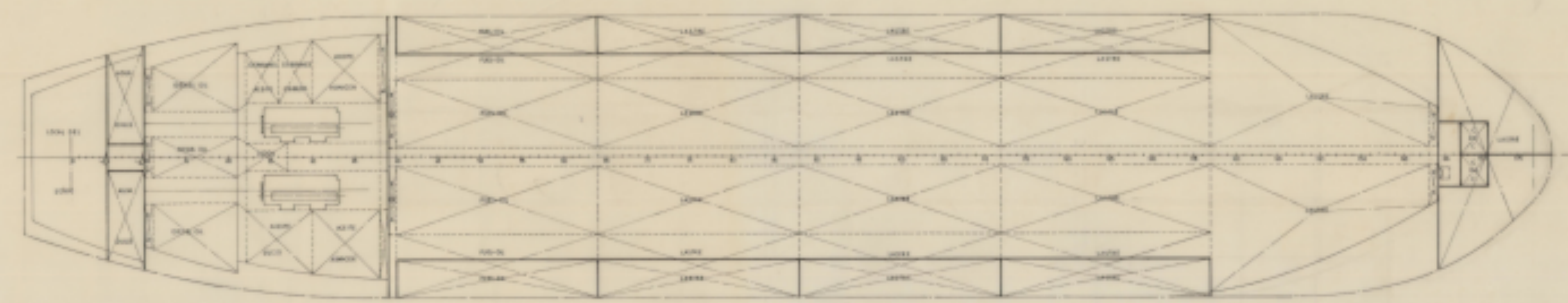
CUB. BOTES



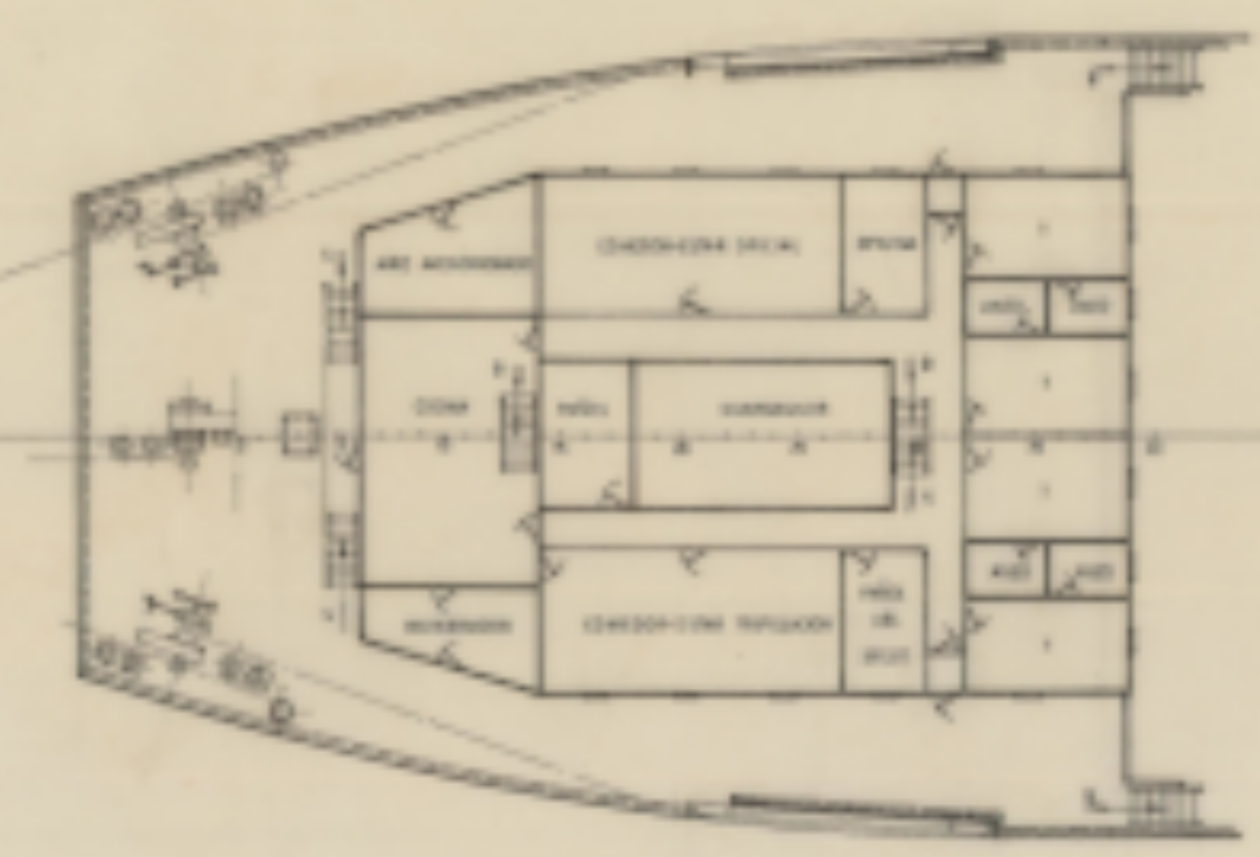
CARACTERISTICAS PRINCIPALES

ESLORA TOTAL	131.00	MET.
- DE REGISTRO	124.00	"
- ENTRE PERPENDICULARES	123.00	"
MANSA DE TRAZADO	21.50	"
PUNAL	8.35	"
CALADO MEDIO DE TRAZADO	6.50	"

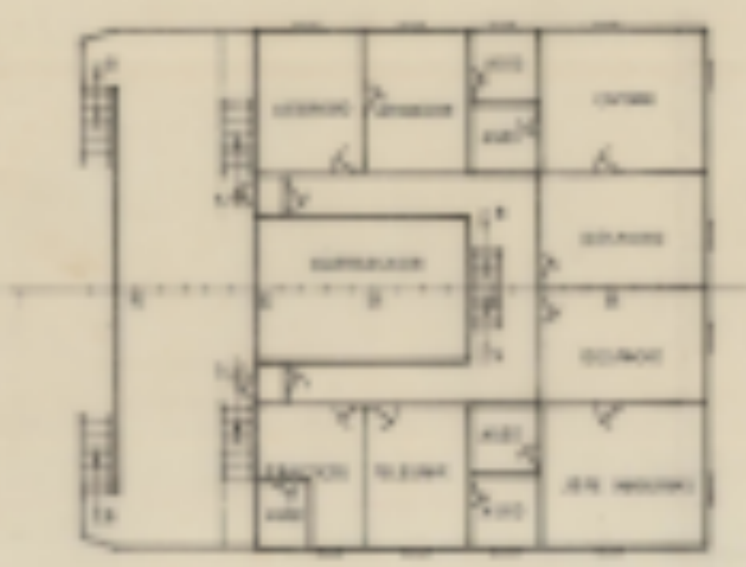
DOBLE FONDO



CUB. TOLDILLA



CUB. SUPERESTRUCTURA



TECNOR OFICINA TECNICA INDUSTRIAL Y NAVAL			
Buenos Aires, Corrientes, 1014/18			
PROYECTO N°	1/0733	MULTIPURPOSE, MADERERO	DESTINO
PLANO N°	0.7004	Y PORTACONTAINERS DE 10000TPM	
ESCALA	1:300	DISPOSICION GENERAL	
N° DE HOJAS	1	DECLARADO	FECHA
HOJA N°	1	CONTRATADO	LA Osmilla
		CONTROLADO	SEPT 1980