



JAMAICA—SOUTH COAST PORT ROYAL AND KINGSTON HARBORS AND APPROACHES

From British surveys to 1956

SOUNDINGS IN FATHOMS
HEIGHTS IN FEET ABOVE HIGH WATER SPRINGS

For Symbols and Abbreviations, see Chart No. 1

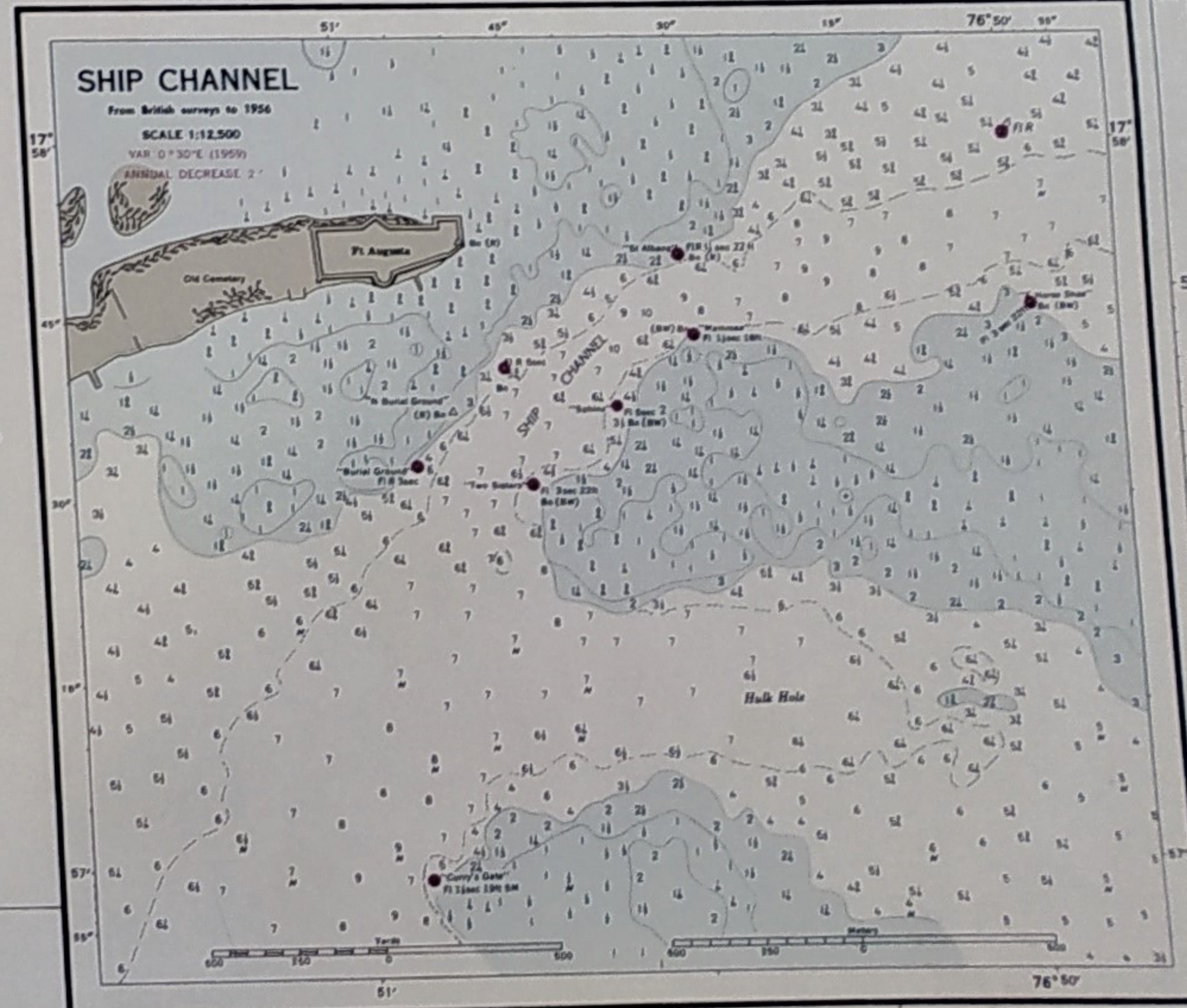
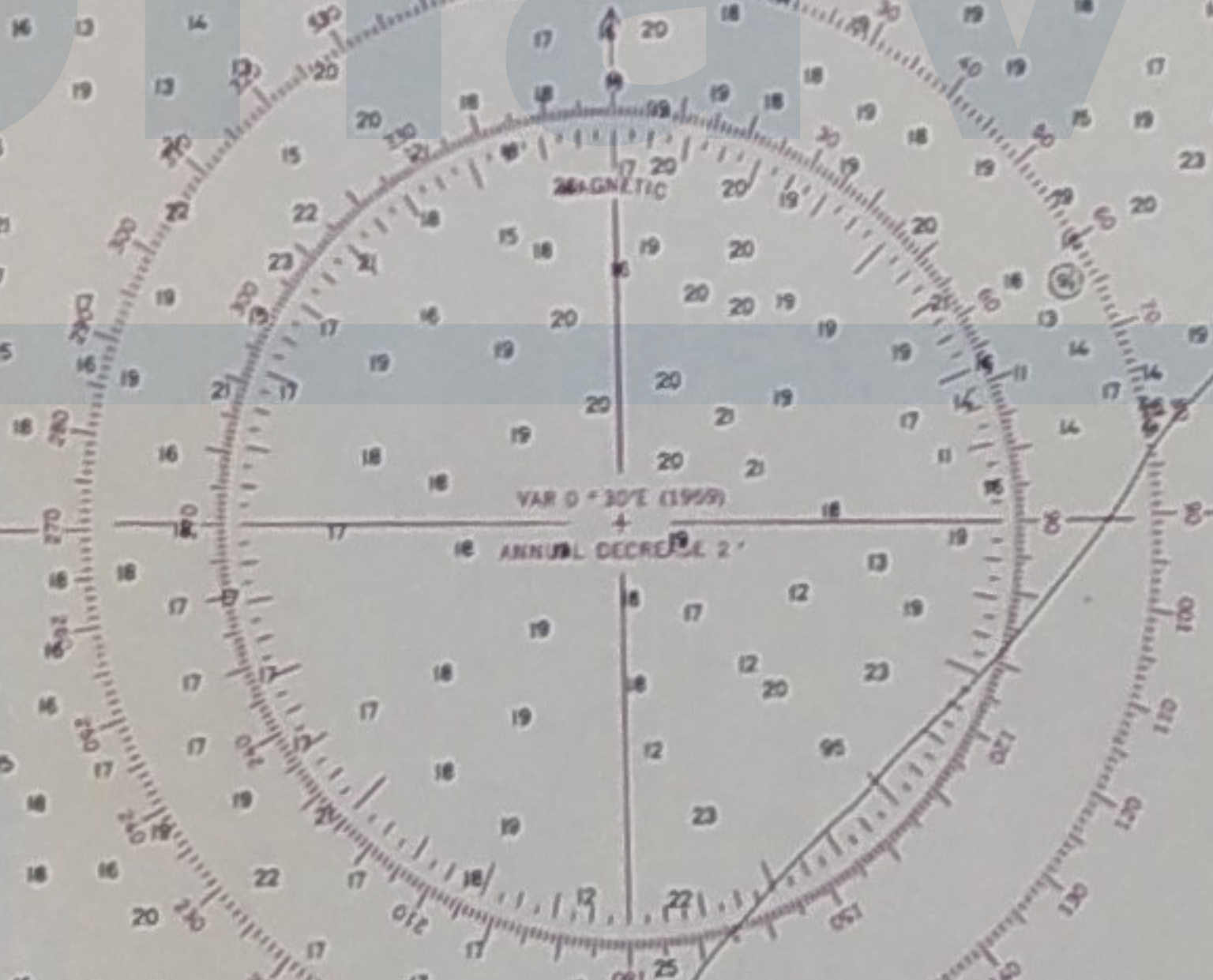
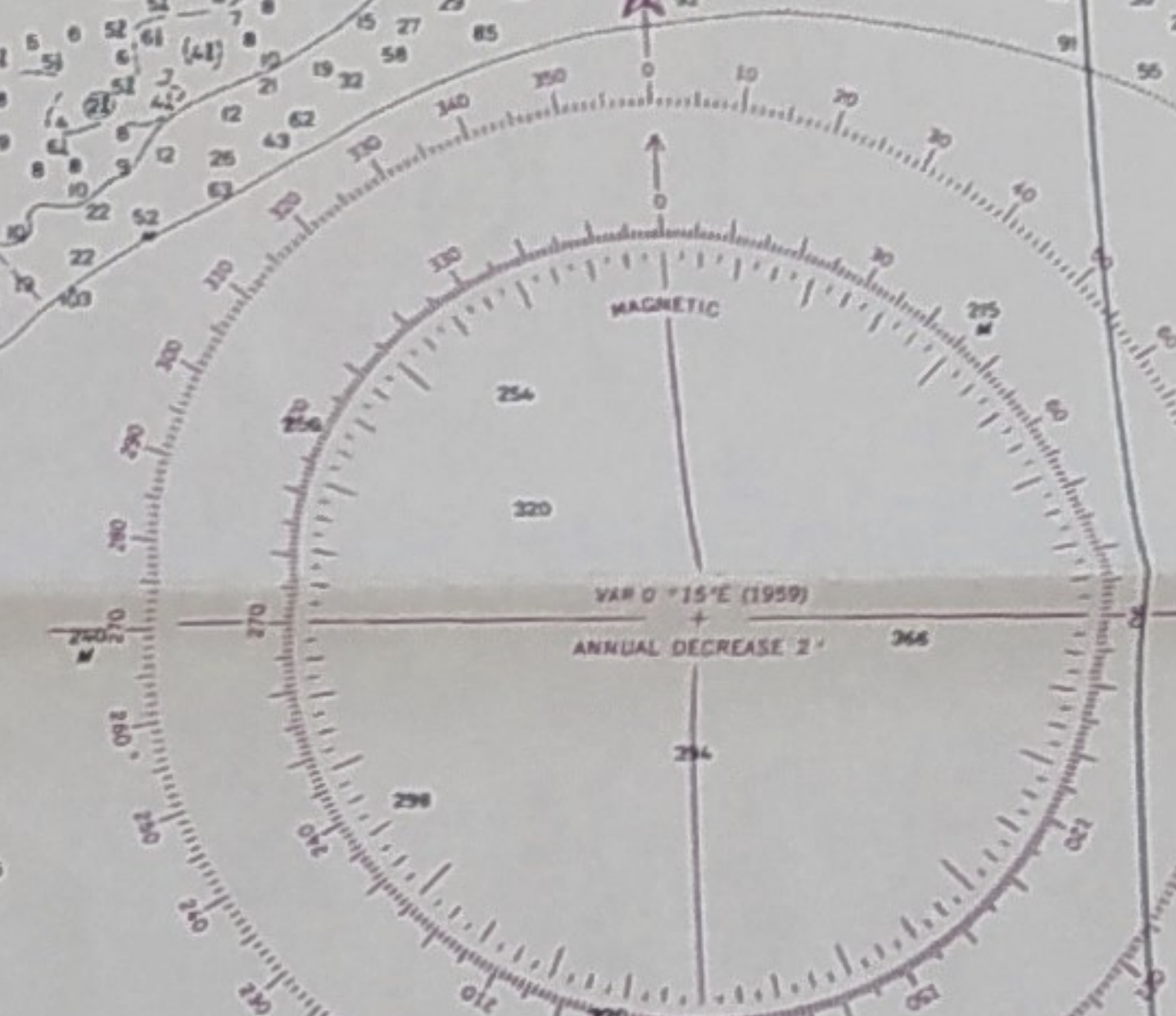
MERCATOR PROJECTION
SCALE 1:30,000

TIDAL INFORMATION AND CHART DATUM

Place	Average Height		Height of Springs near the Station	
	High Water	Low Water	High Water	Low Water
Port Royal	2.6	1.1	2.0	0.9

CONVERSION TABLE FATHOMS TO METERS

Fathoms	Meters	Fathoms	Meters
1	0.9	11	20.1
2	1.8	12	21.9
3	2.7	13	23.8
4	3.7	14	25.6
5	4.6	15	27.4
6	5.5	16	29.3
7	6.4	17	31.1
8	7.3	18	32.9
9	8.2	19	34.7
10	9.1	20	36.6
11	10.0	21	38.4
12	10.9	22	40.3
13	11.8	23	42.1
14	12.7	24	43.9
15	13.6	25	45.7
16	14.5	26	47.6
17	15.4	27	49.4
18	16.3	28	51.3
19	17.2	29	53.1
20	18.1	30	55.0



CAUTION
1. Vessels anchoring in Kingston Harbor must ensure that they cannot swing into the area indicated by dashed lines.
2. Vessels are warned not to anchor in the area indicated by dashed lines eastward of Plum Pk on account of the existence of telegraph cables.

NOTE
Anchorage berths for H.M. Ships are shown thus—A

COMPILATION DATA
British Admiralty Charts Nos. 434, 435
U.S. Navy Hydrographic Office Publications