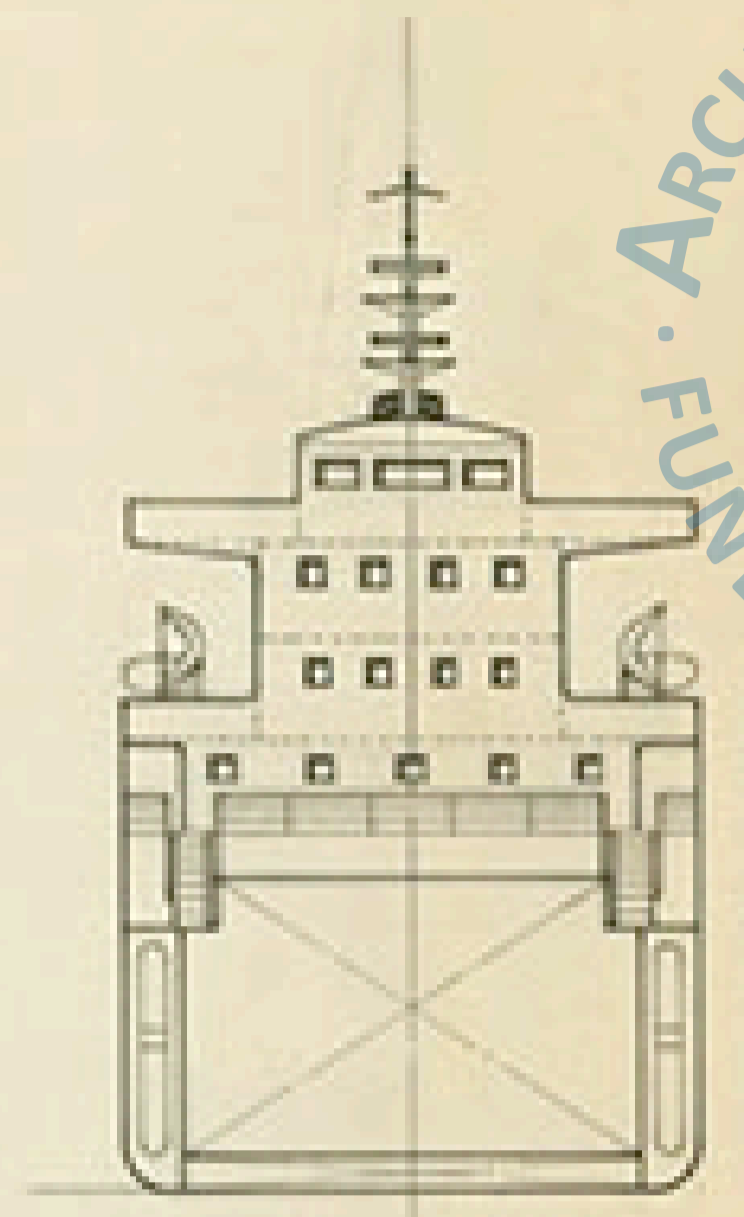
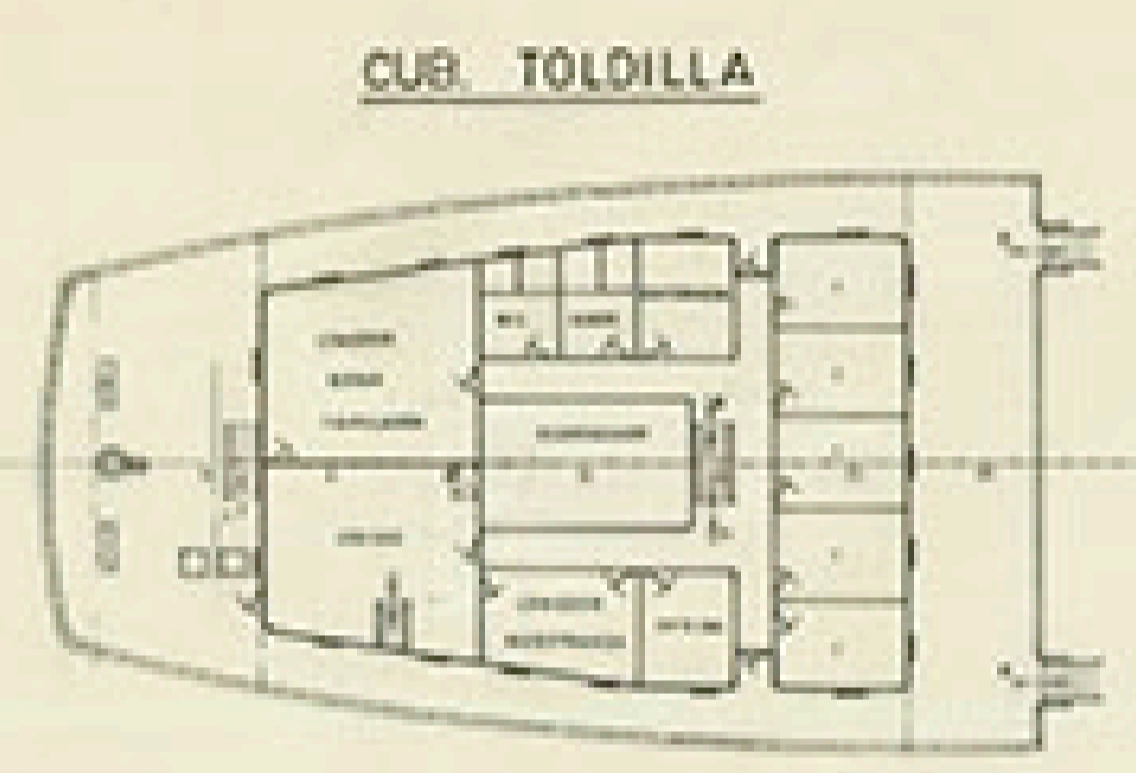


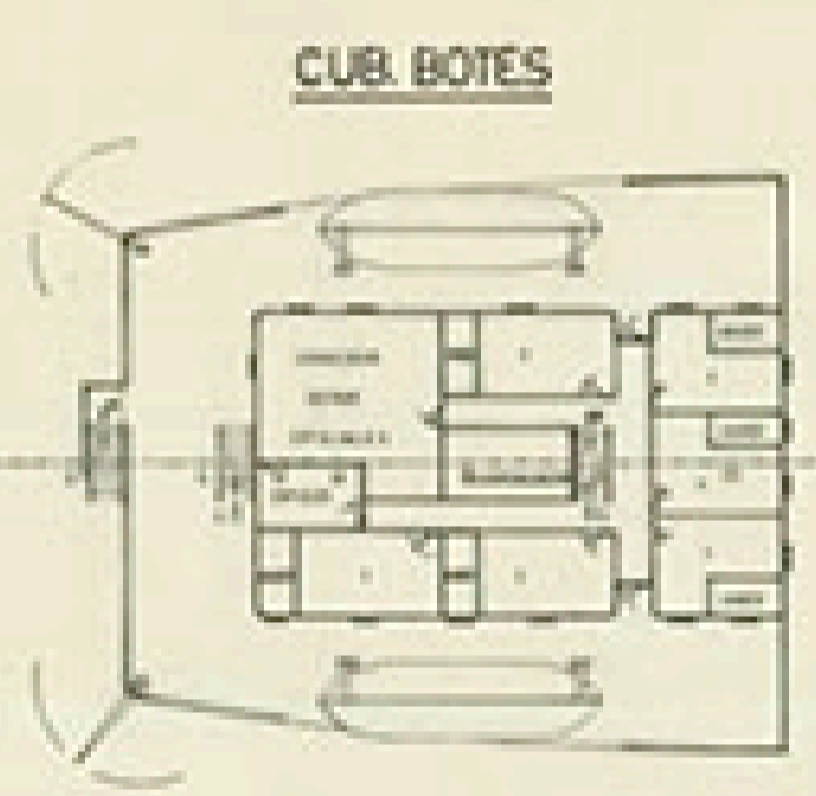
PERFIL



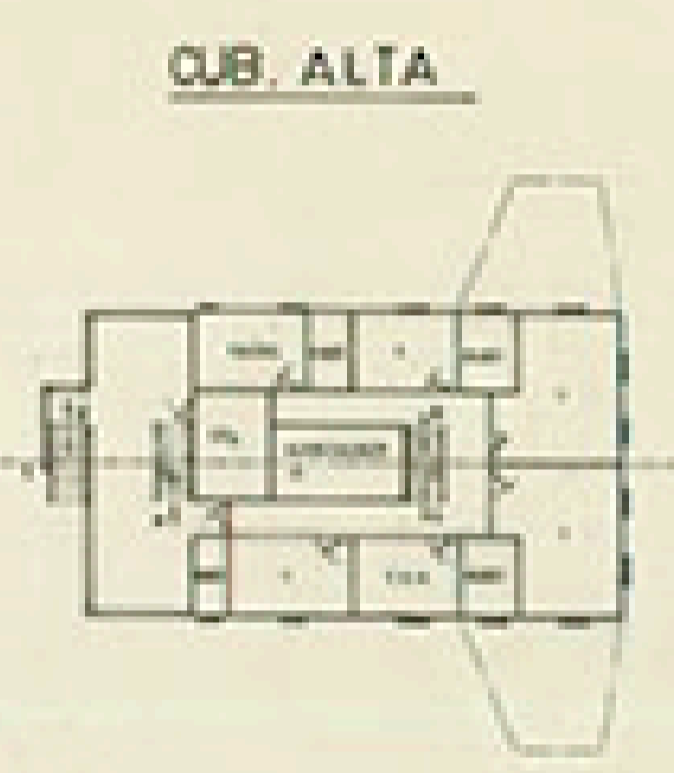
PLATAFORMA MAQUINAS



CUB. TOLDILLA



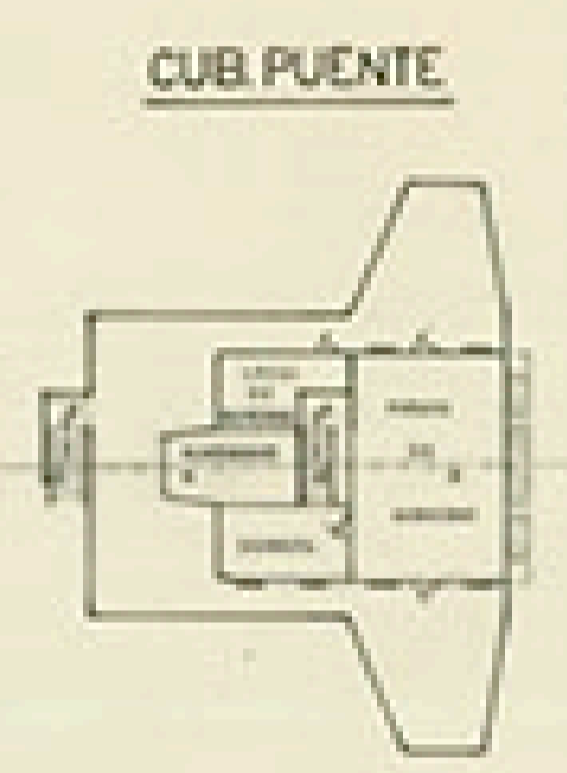
CUB. BOTES



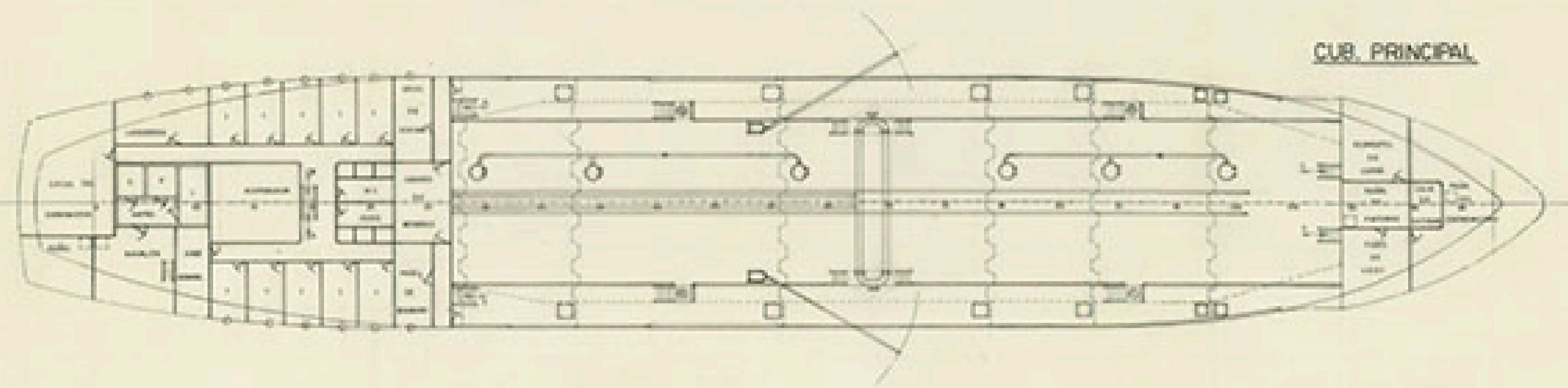
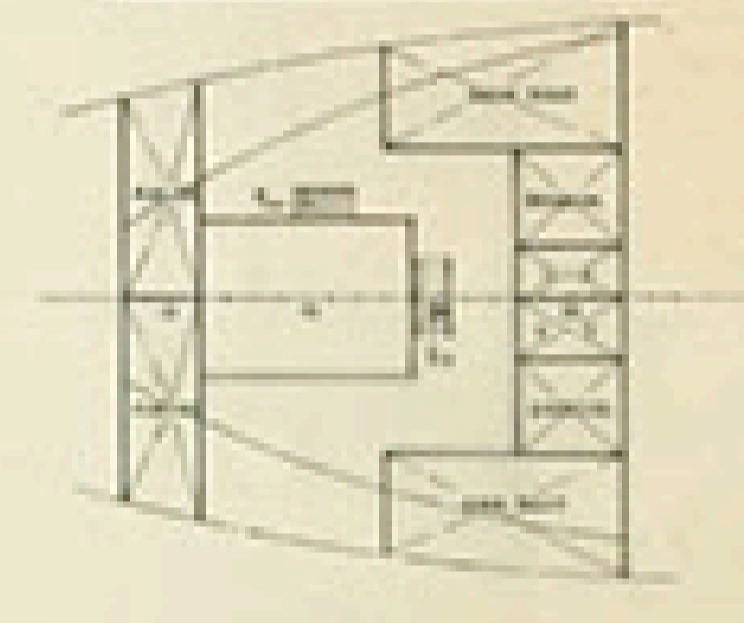
CUB. ALTA



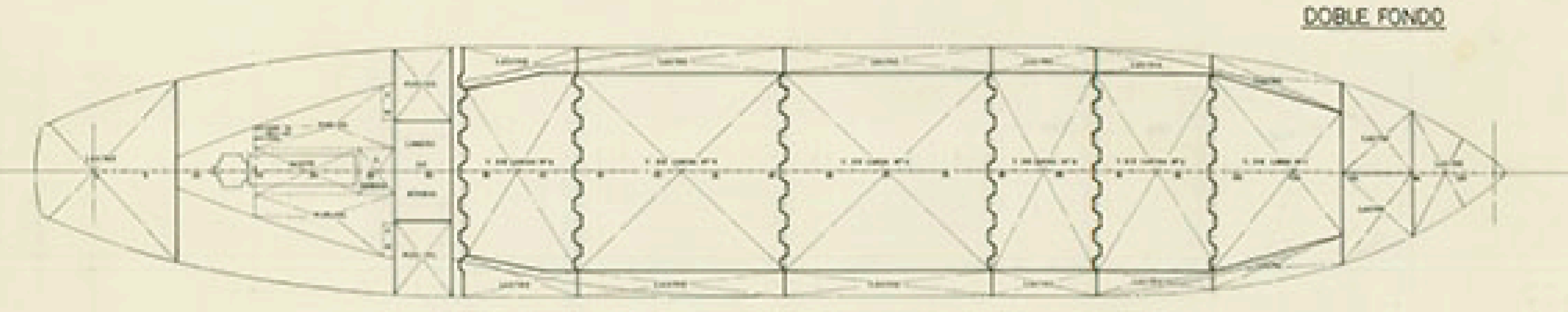
CUB. CASTILLO



CUB. PUENTE



CUB. PRINCIPAL



DOBLE FONDO

CARACTERISTICAS PRINCIPALES

ESQUERA TOTAL	95,50 MTS
DE REGISTRO	85,00 "
ENTRE PERPENDICULARES	80,00 "
MANSA DE TRAZADO	15,20 "
PUNTALES	4,70 "
CALADO	3,84 "

TECNOR OFICINA TECNICA INDUSTRIAL Y NAVAL			
PROYECTO N°	1/5493	DESTINO	BUQUE ASFALTERO DE 4200TRM
PLANOS N°	0/1004	DISPOSICION GENERAL	
ESCALA	1/200	FECHA	
N° DE HOJAS	1	ELABORADO	LA EMPRESA
HOJA N°	1	REVISADO	NOV. 1973