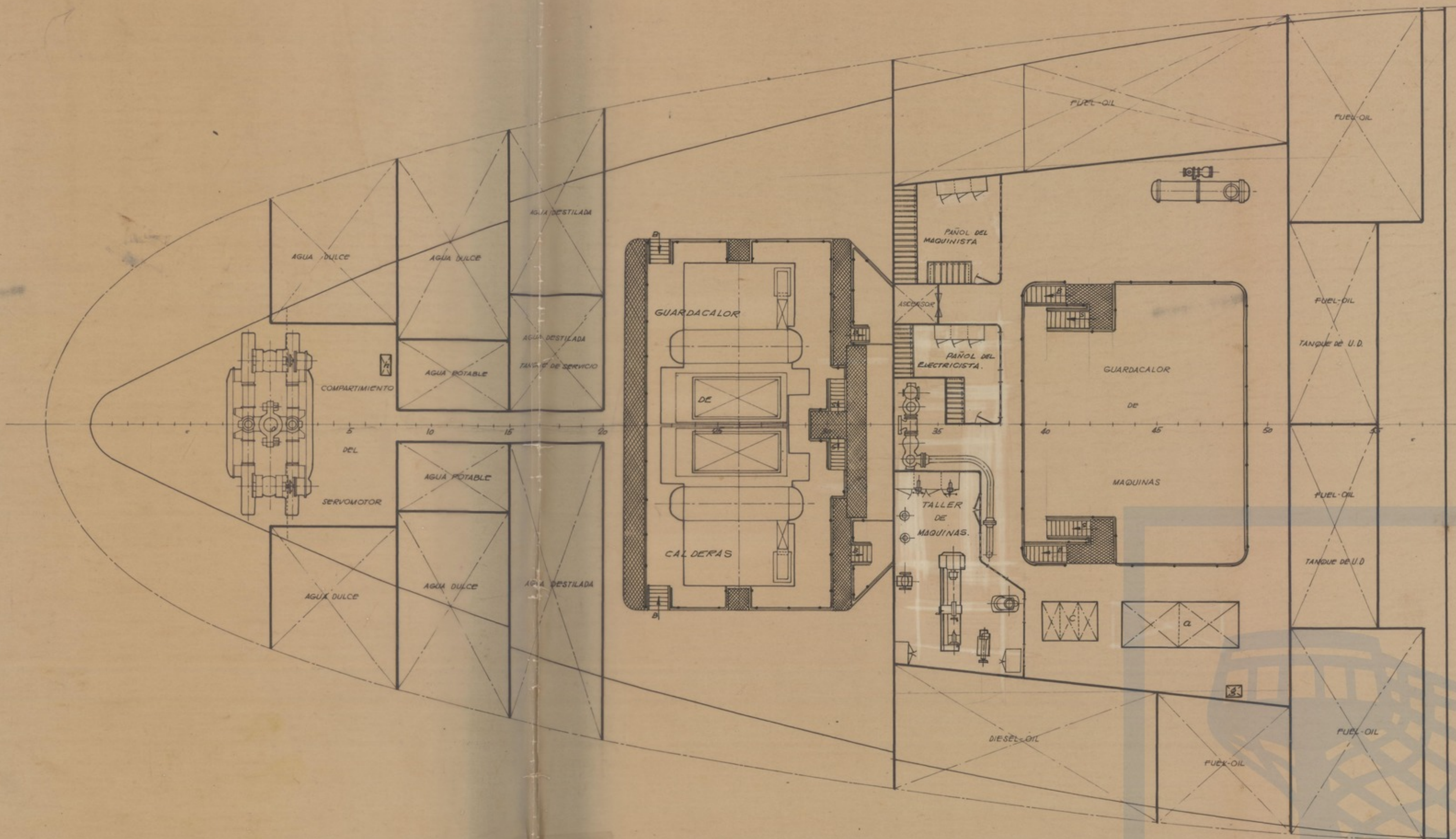
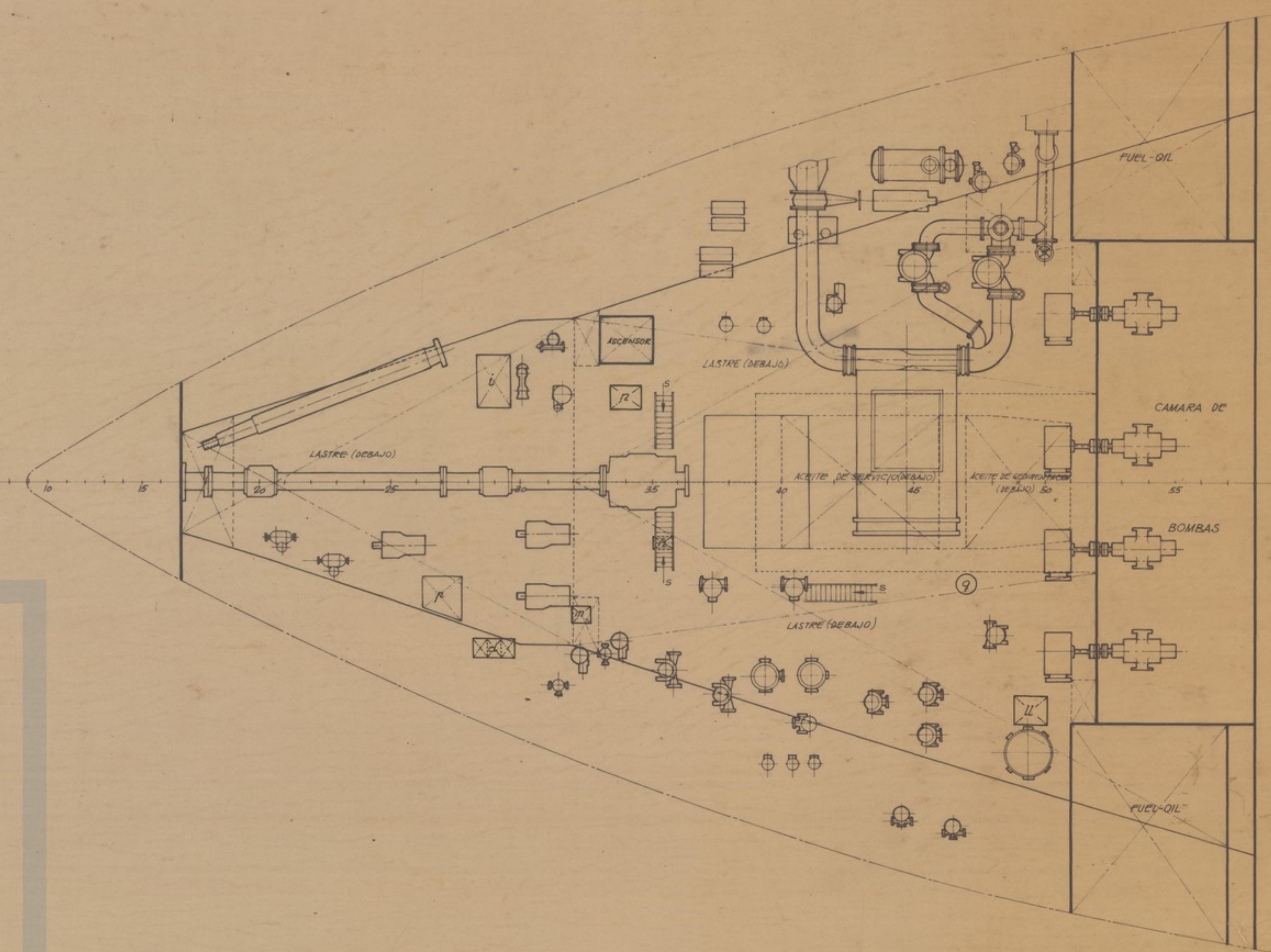


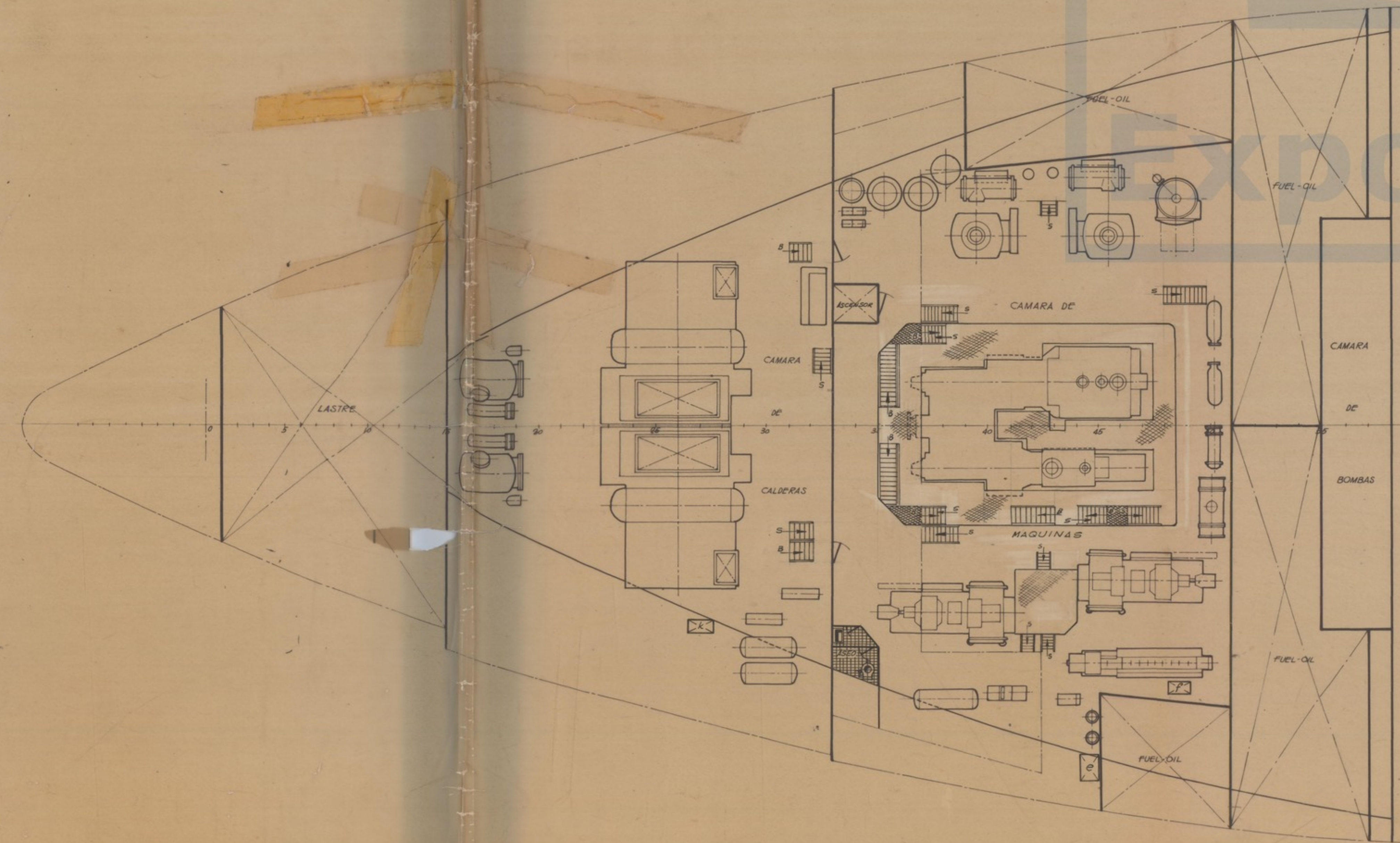
PLATAFORMAS A 13,25 - 12,95 Y 12,55 mts s/b



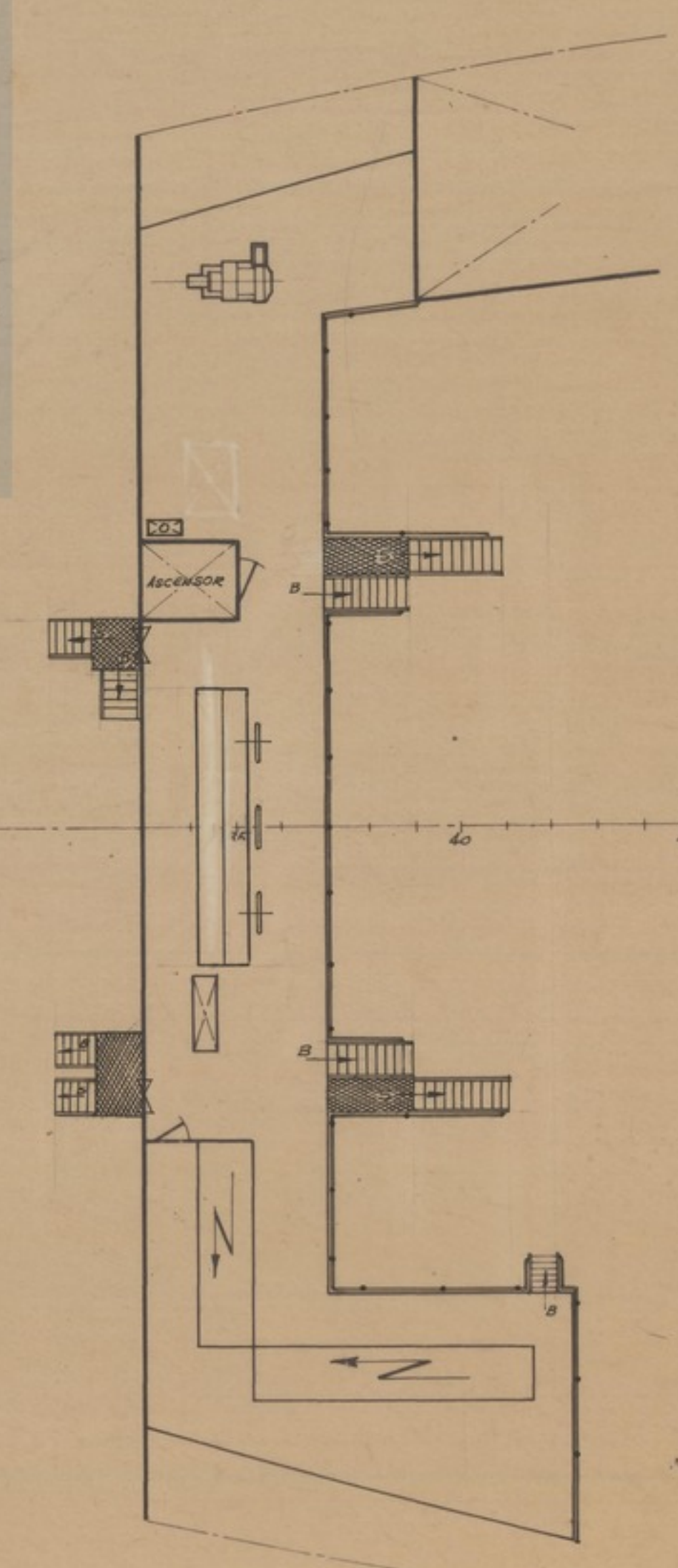
PISO INFERIOR



PLATAFORMA A 8,00 mts. s/b



PLATAFORMA A 10,5 mts. s/b



A	Rediseño taller de máquinas según plano T-332-A-1 aprobado por el armador	1/10	10-10-43
B	Modificado y aumentado de acuerdo con planos de taller, etc., etc.	1/30	10-10-43
NC-190			
Toma	1:100		
PETROLERO DE 59220 TONS. DE P.M. A TURBINAS			PR-11004.3
DISPOSICION GENERAL			3 3