

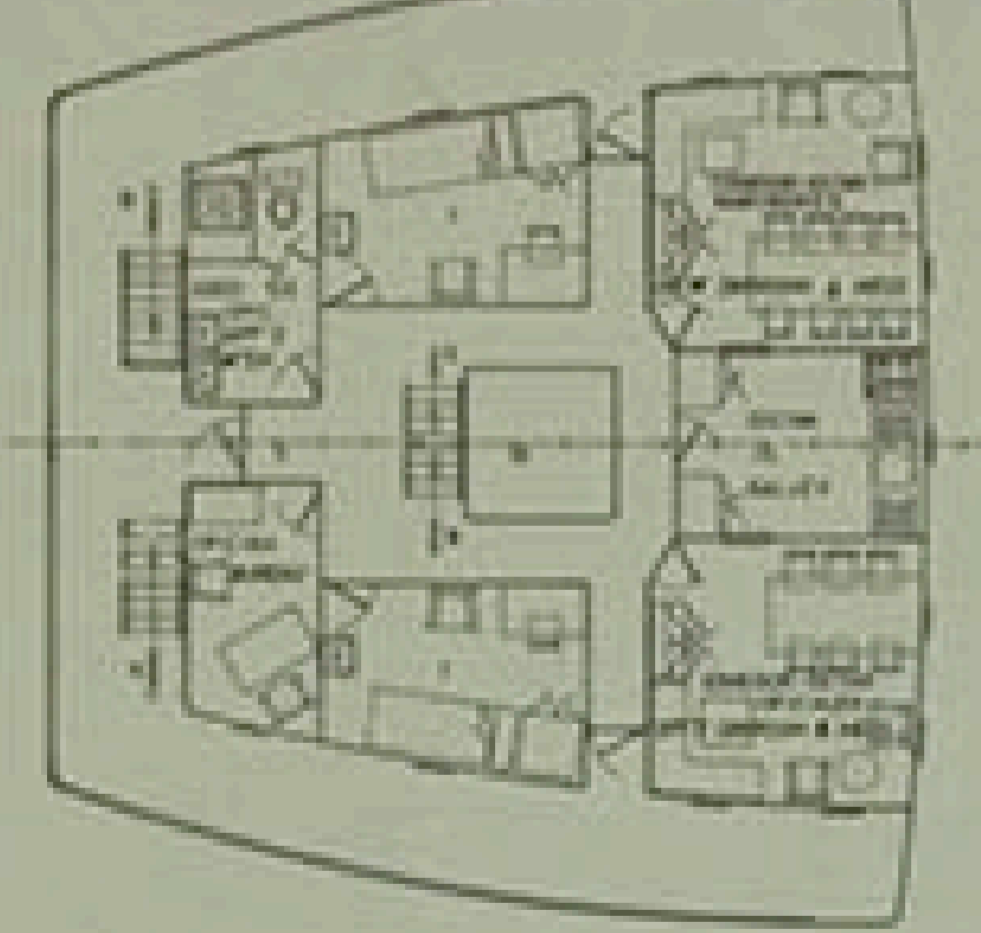
CARACTERISTICAS PRINCIPALES

REGISTRO TOTAL	1630 MTS
- DE REGISTRO	75,38
- ENTRE PERPENDICULARES	73,48
MANA DE TRAZADO	13,11
PUNTO A LA CUB. PRINCIPAL	3,95
- SUPERIOR	4,85
CALADO MEDIO DE TRAZADO	3,35

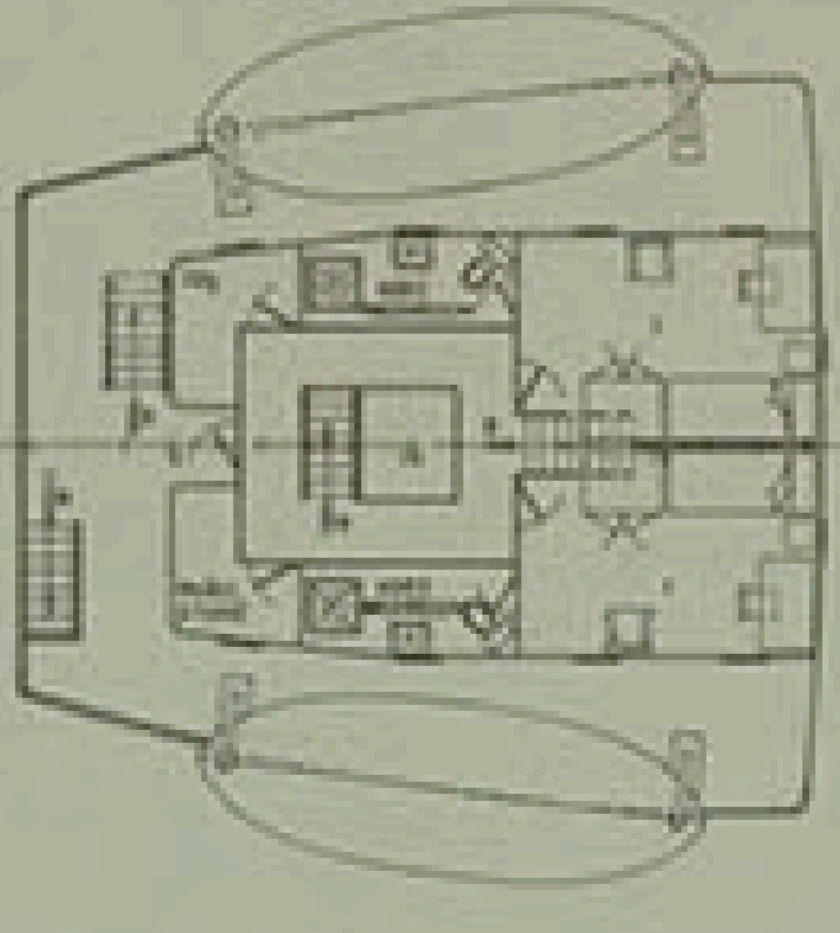
PRINCIPAL PARTICULARS

LENGTH O.A.	1630 MTS (5378 FT)
TOWAGE LENGTH	75,38 - (247 1/2 FT)
LENGTH B.P.	73,48 - (241 1/2 FT)
BREADTH MOULDED	13,11 - (43 FT)
DEPTH MOULDED TO UPPER DECK	3,95 - (12 7/8 FT)
DEPTH MOULDED TO LOWER DECK	4,85 - (15 7/8 FT)
DRAUGHT SUMMER LOAD	3,35 - (11 FT)

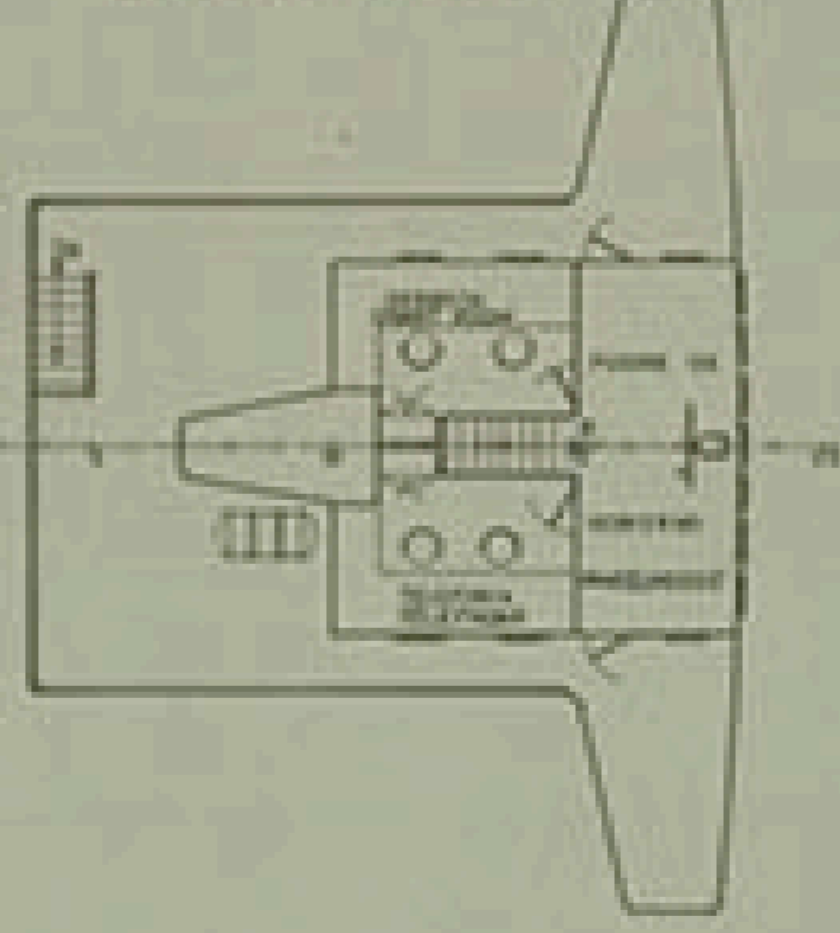
CUB. SUPERESTRUCTURA  
BRIDGE DECK



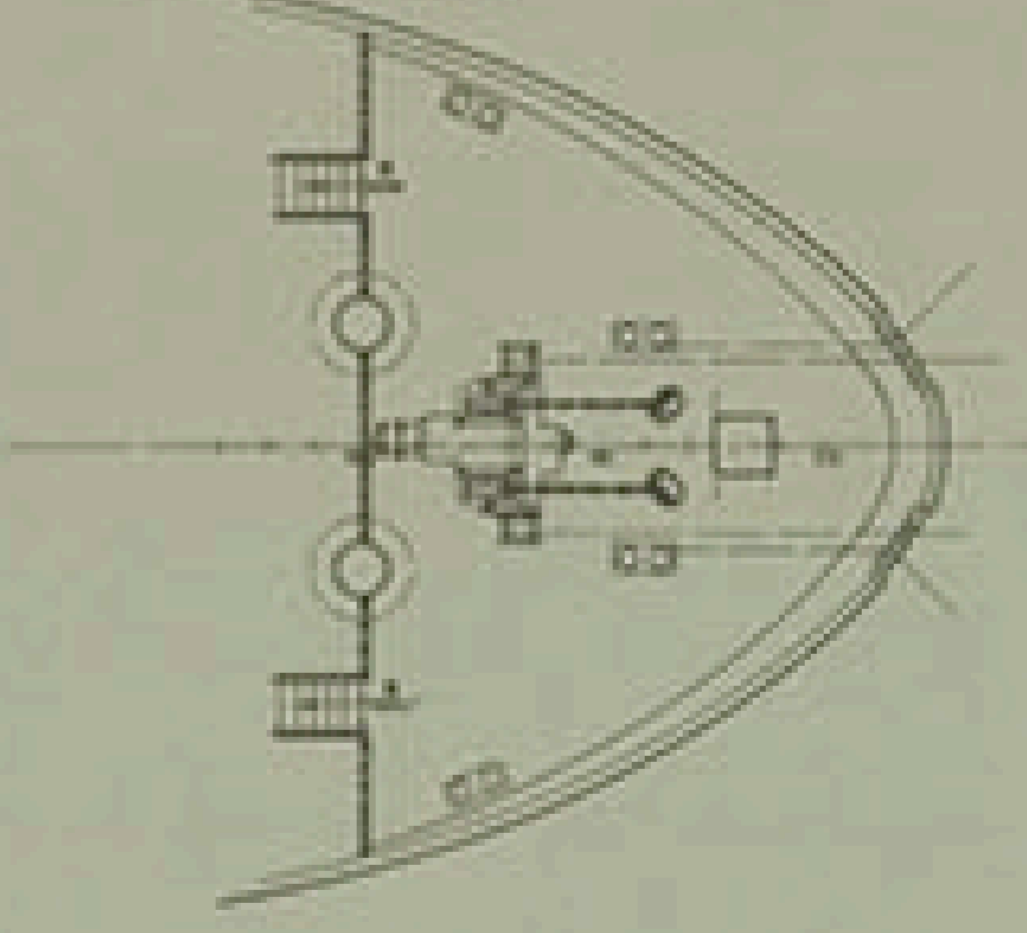
CUB. ROTAS  
WHEEL DECK



CUB. PUENTE  
NAVIGATION BRIDGE DECK



CUB. CASTILLO  
FORECASTLE DECK



<b>BANOREX, S. A.</b>		
PROYECTO 1/0195	BUQUE PORTA CONTAINERS TIPO T-A7250SA	DESTINO
PLANO N. 0/004	DISPOSICION GENERAL GENERAL ARRANGEMENT	
ESCALA 1/100	PROYECTA	FECHA
N. <sup>o</sup> DE HOJAS 2	TECNOR (INGENIERO INDUSTRIAL)	EL INGENIERO
HOJA N. <sup>o</sup> 1		