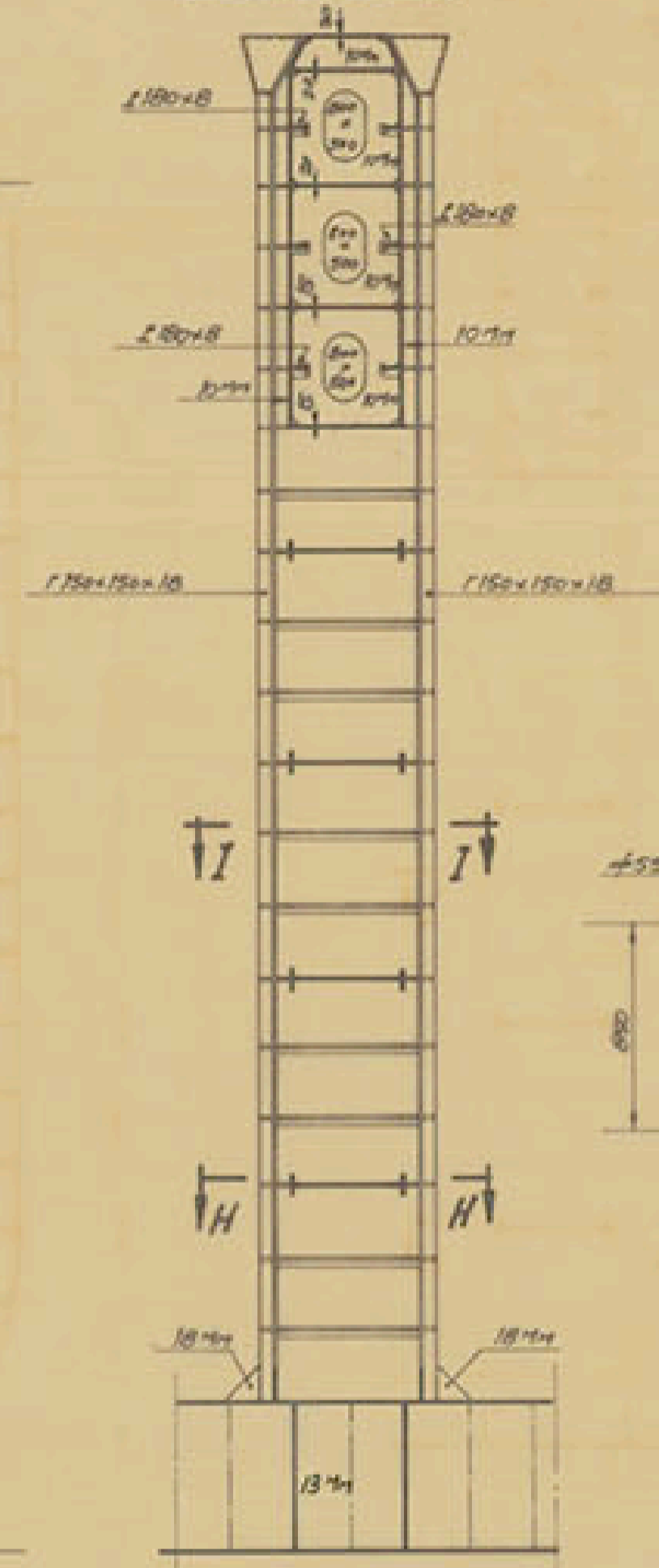
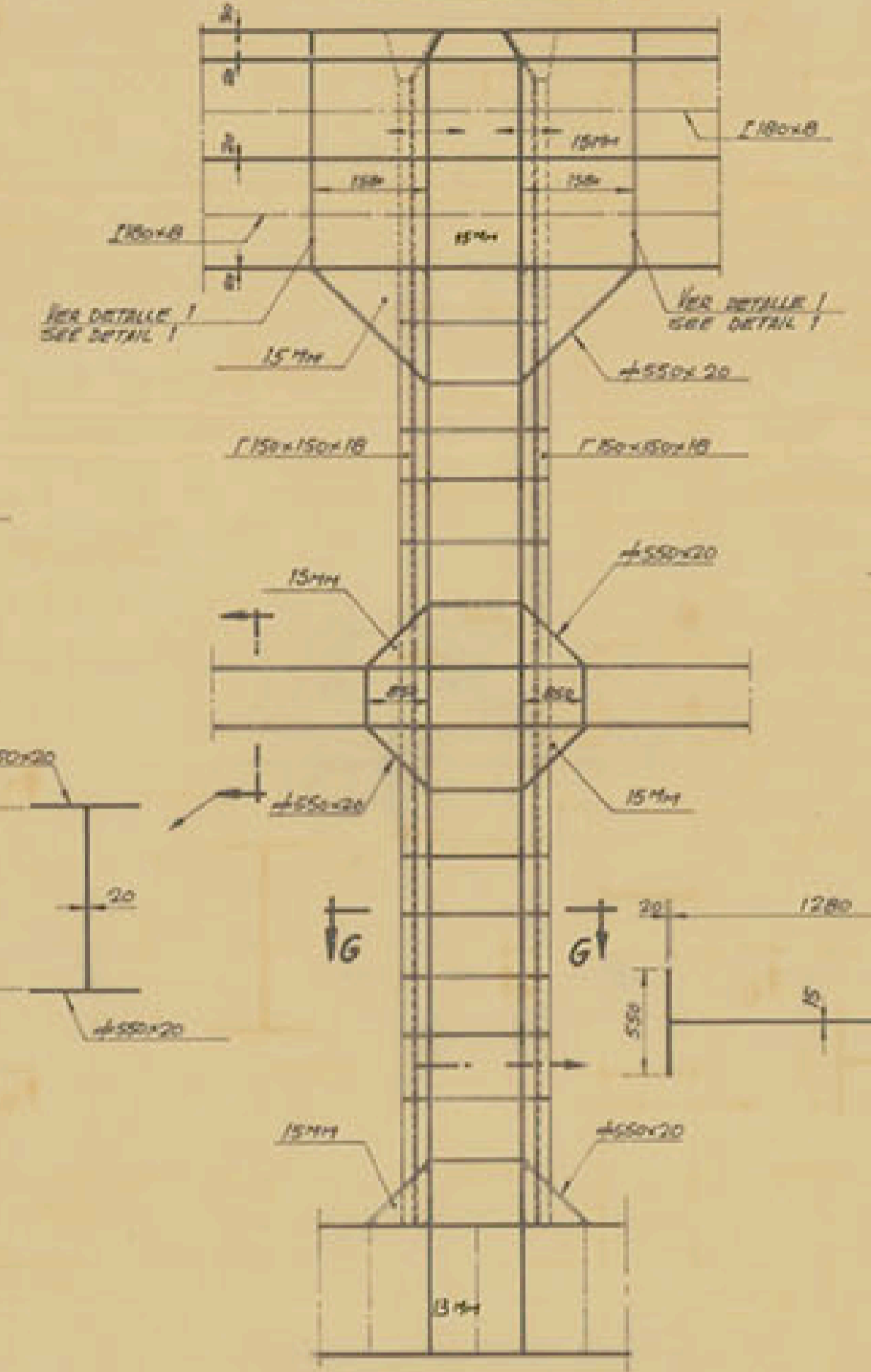


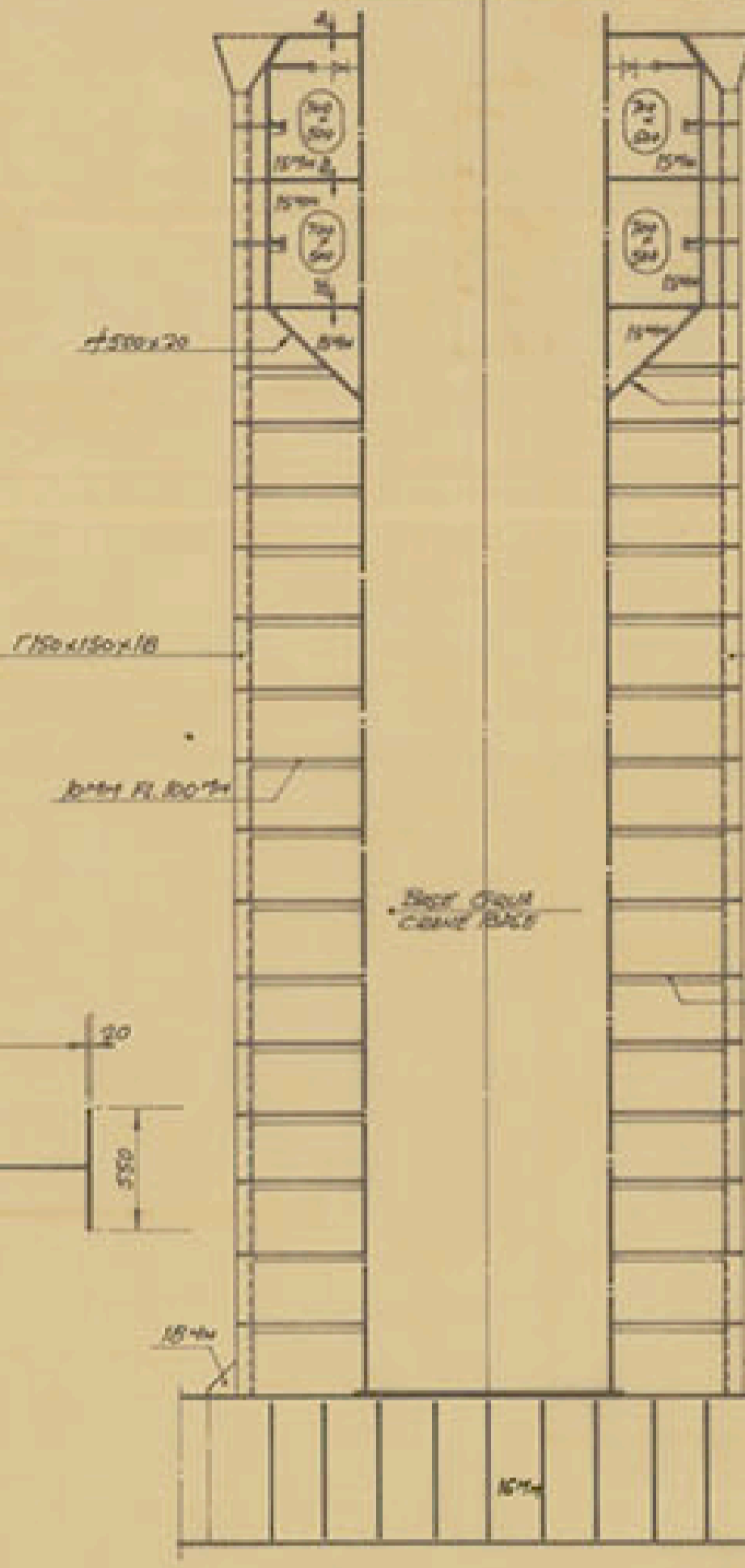
SECCION A SECTION A



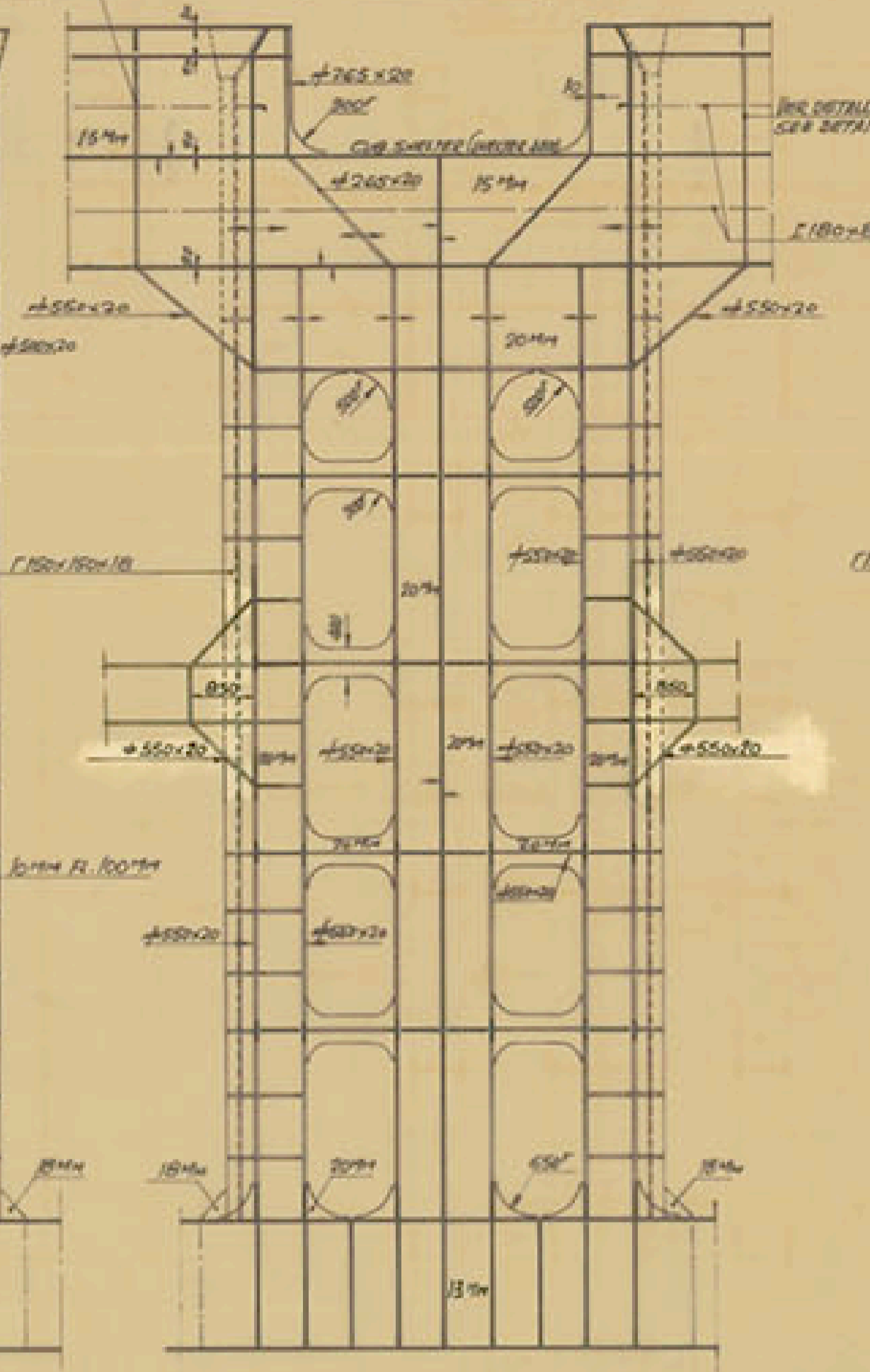
SECCION B SECTION B



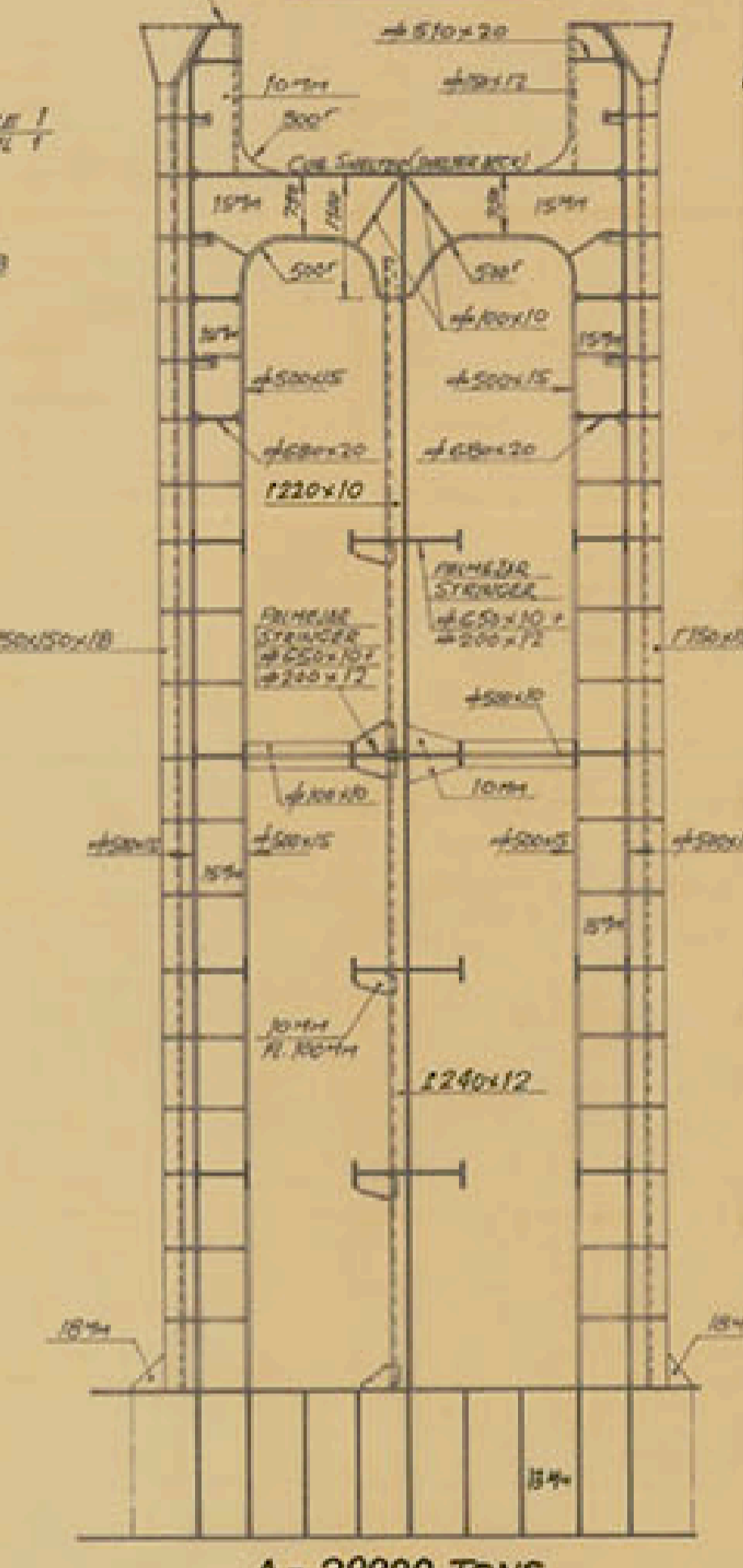
SECCION C SECTION C



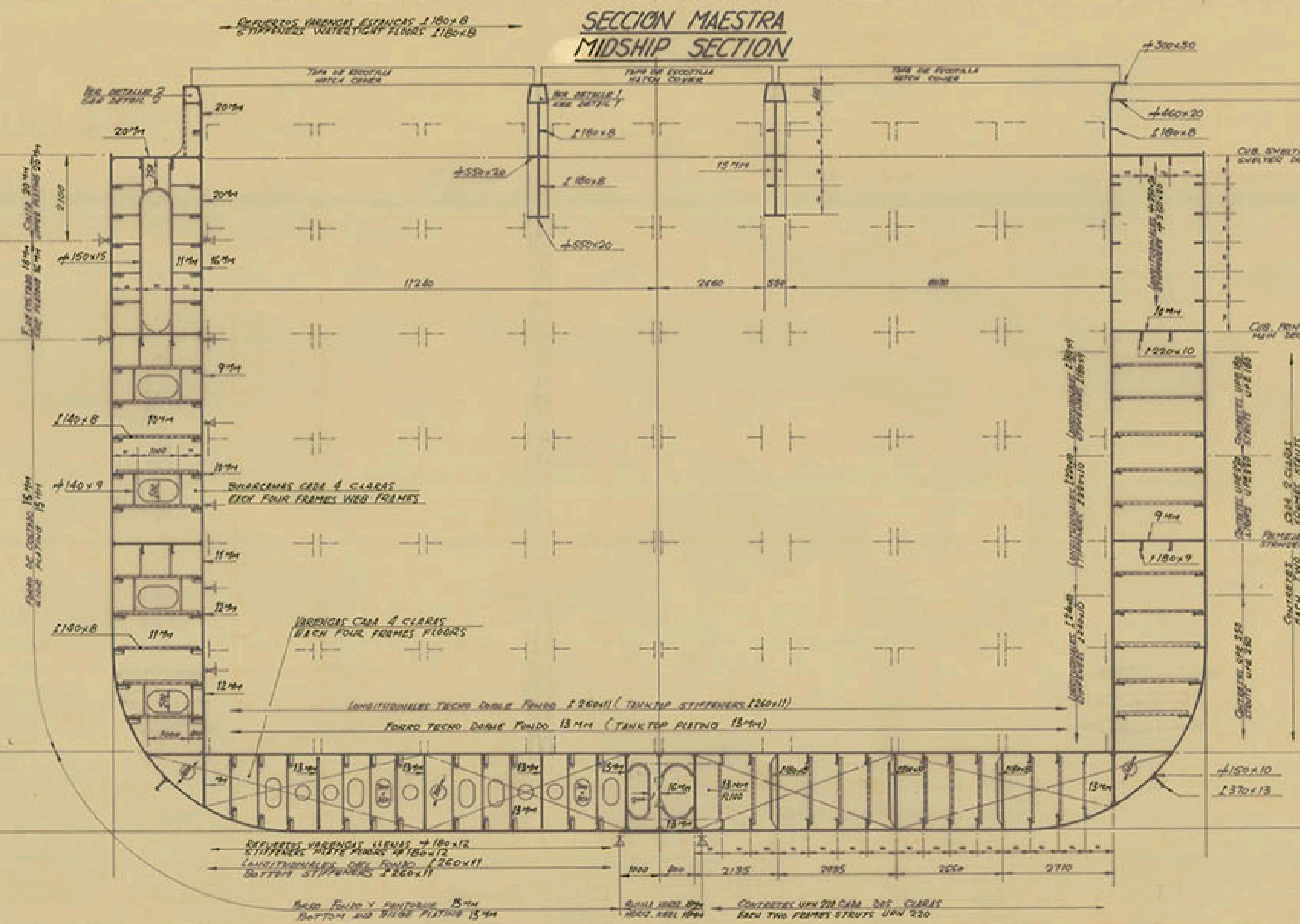
SECCION D SECTION D



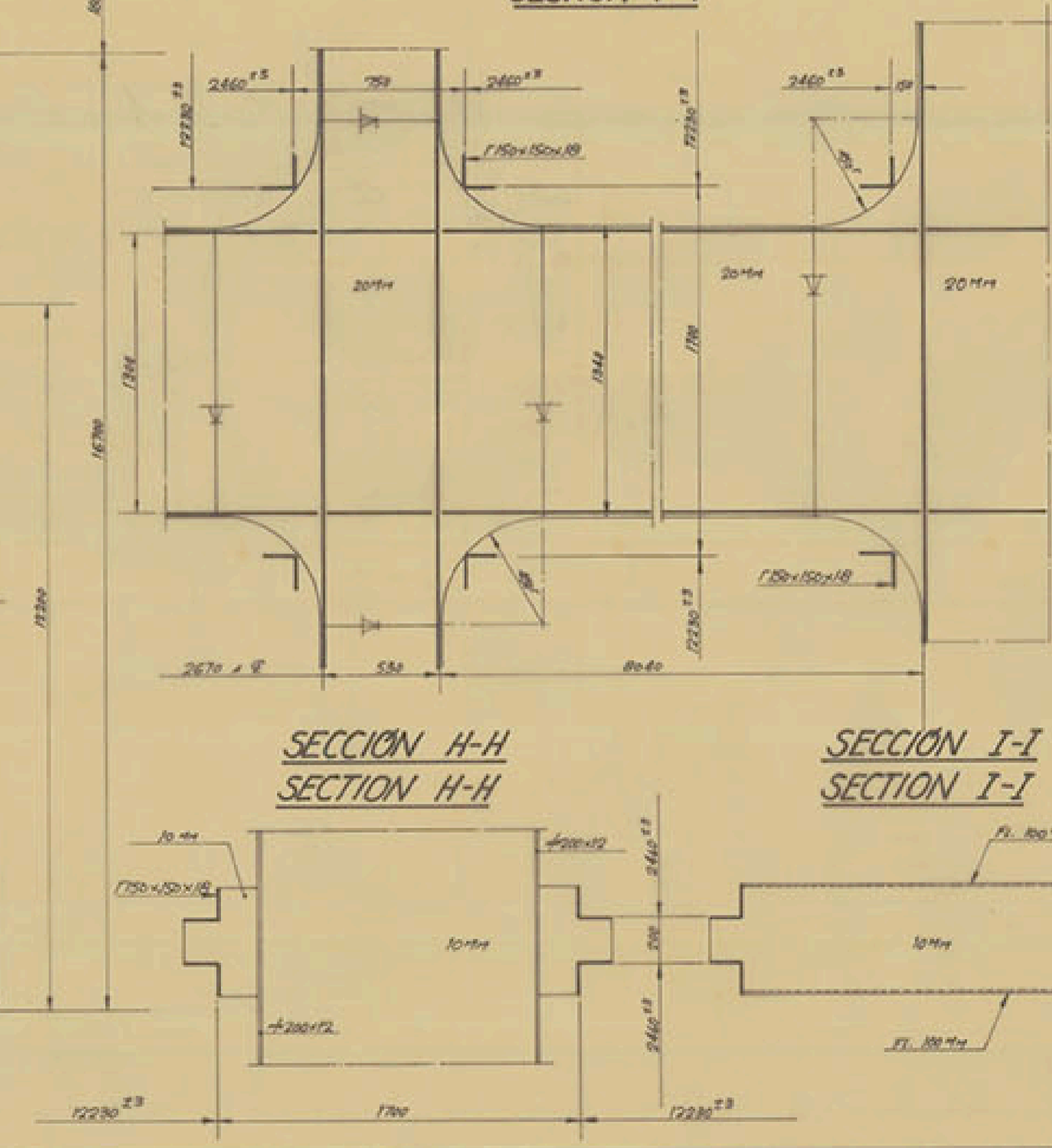
SECCION E SECTION E



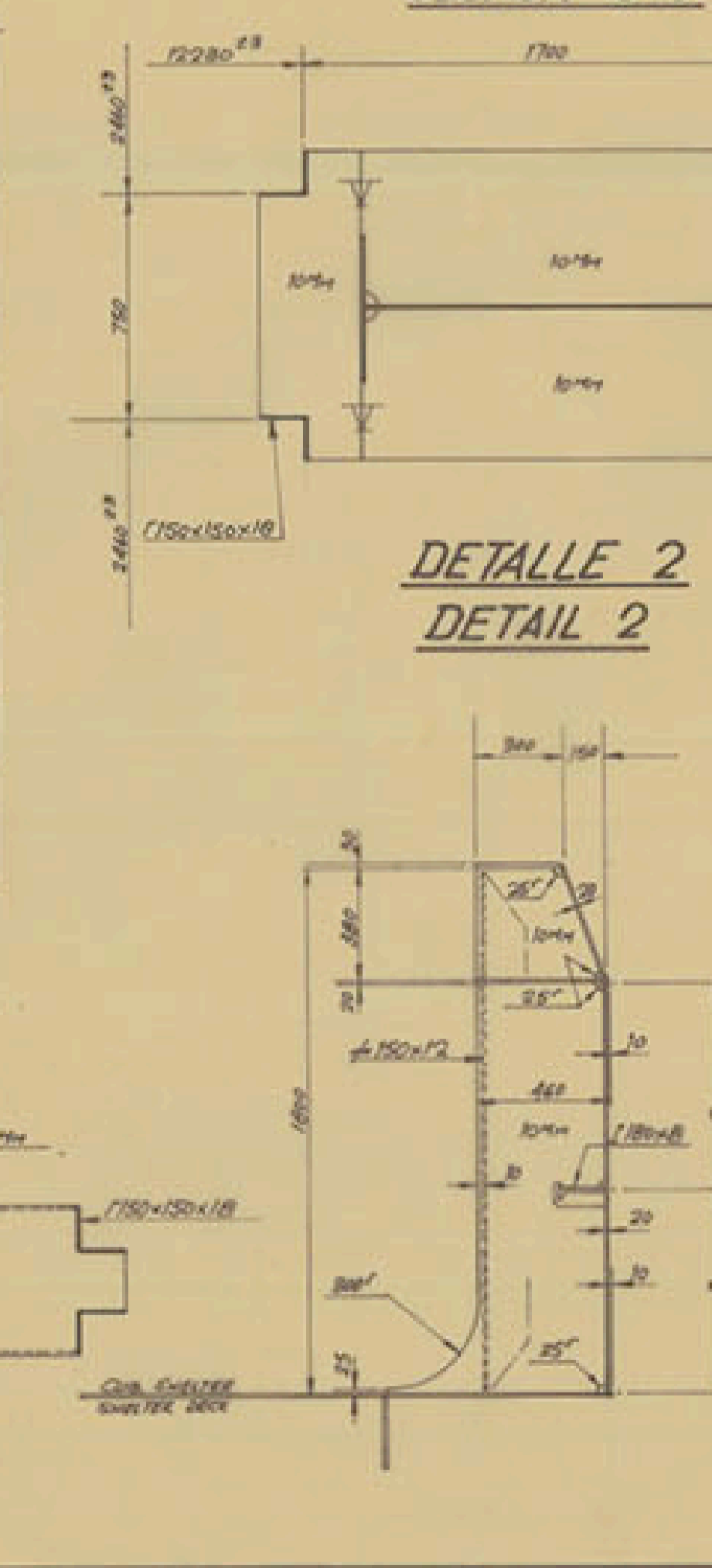
NOTE: EL BUQUE SE CONSTRUIRA CON UN ESCANTILLONADO QUE SEAN EN STEEL PLATE AND QUINERY YOUNG IS DECLARADO, DE LA DUBARRA DE CALIFICACION PAGER DE LOS MENORES.
NOTE: THE VESSEL WILL BE BUILT ACCORDING WITH THE SCANTLING SHOWN ON THIS DRAWING STILL TO THE REGULATION OF THE CLASSIFICATION SOCIETY INDICATES THAT THIS SCANTLING COULD BE LESS.



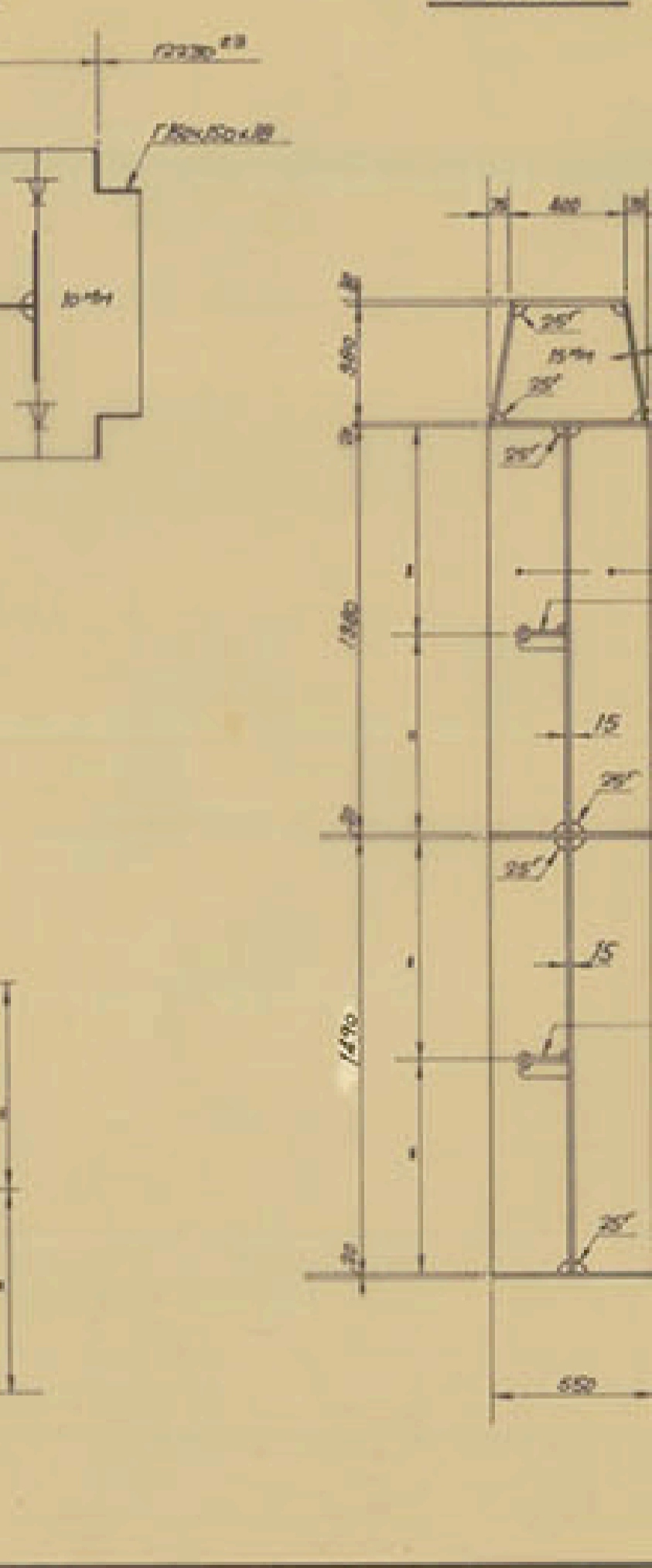
SECCION F-F SECTION F-F



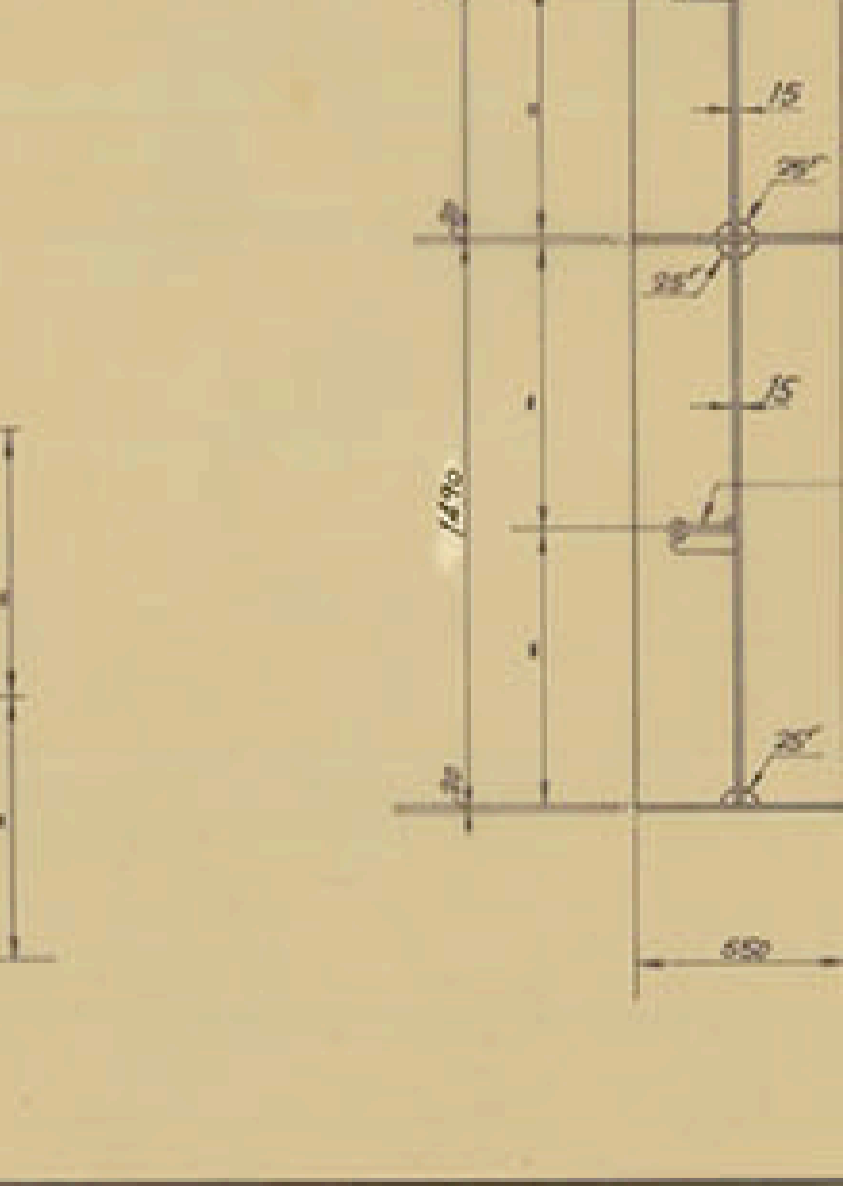
SECCION G-G SECTION G-G



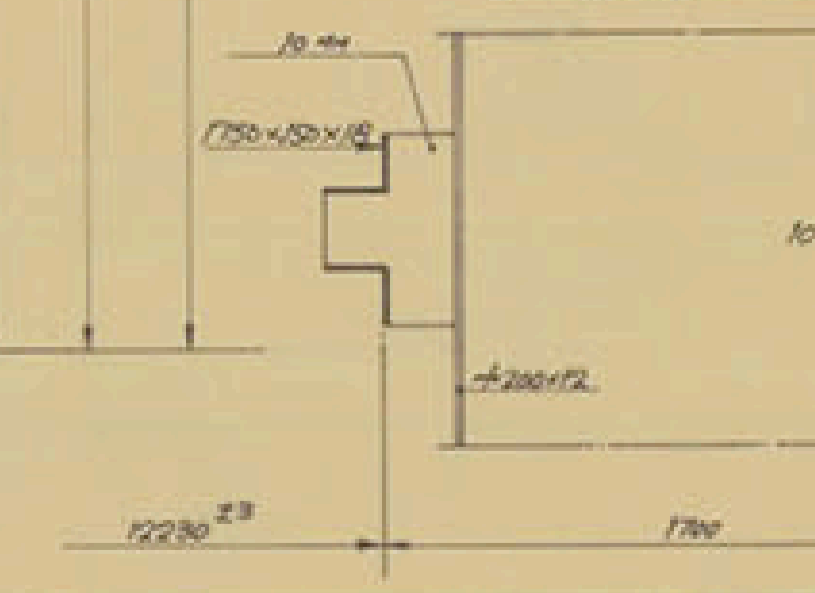
DETALLE 1 DETAIL 1



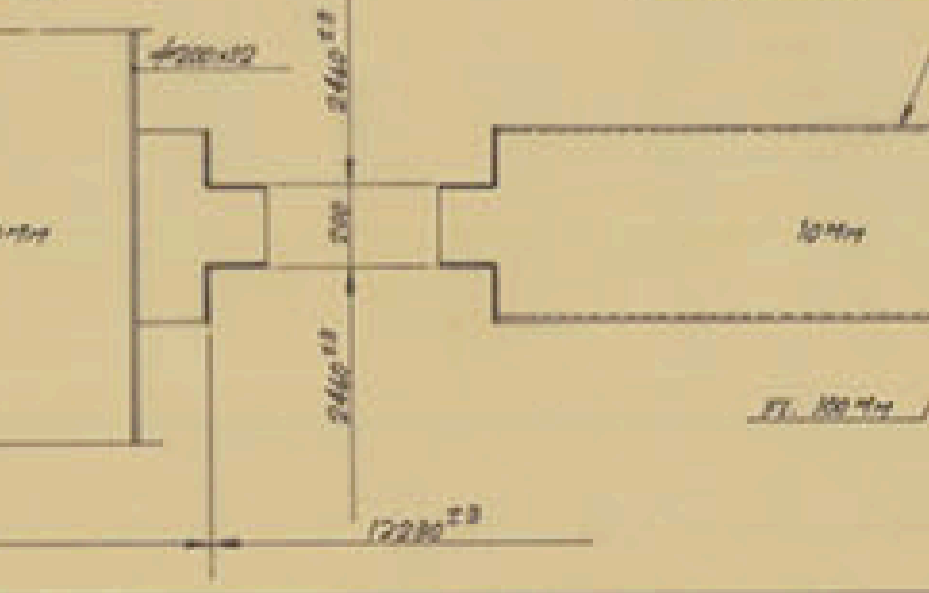
DETALLE 2 DETAIL 2



SECCION H-H SECTION H-H



SECCION I-I SECTION I-I



$\Delta = 29900 \text{ TONS}$
 $N_A = \Delta^{2/3} \cdot 2.8h + 0.1A = 2750$

EQUIPO EQUIPMENT
3 ANCHAS SIN CEPLO DE 8300 KGS. CADA UNA (3 BOWSER ANCHOR OF 8300KGS EACH)
632.5 MTS DE CABLE CON CONTRATE DE 70 MM Ø 3 (632.5 MTS OF CHAIN CABLE FOR BOWSER ANCHORS OF Ø 70 MM GRADE 3 EXTRA HIGH STRENGTH STEEL)
260 MTS CABLE DE REMOLQUE DE 150000 KGS C.A. (260 MTS TOW LINE OF 150,000KGS. BREAKING STRENGTH)
6 AMARRAS DE 200 MTS CADA UNA Y 50000 KGS C.A. (6 MOORING ROPES OF 200 MTS LENGTH EACH AND 50,000 KGS BREAKING STRENGTH)

CLASIFICACION CLASS NOTATION OF SHIP
BUREAU VERITAS. T 3/5 PONTONERES. ROLL ON/ROLL OFF HIGH SEA. BUT-MS. CLASSE III.

CARGAS PREVISTAS DESIGNED LOADINGS
DOBLE FONDO DOUBBLE BOTTOM 6 FILAS DE CONTENEDORES DE 40'x8'x8' 40 TONS C.U.
TAPAS DE ESCOTILLA HATCH COVER 3 FILAS DE CONTENEDORES DE 40'x8'x8' 40 TONS C.U.
DOBLE FONDO DOUBBLE BOTTOM 6 FILAS DE FULLY LOADED 40'x8'x8' CONTAINERS WITH 40 TONS EACH.
TAPAS DE ESCOTILLA HATCH COVER 3 FILAS DE FULLY LOADED 40'x8'x8' CONTAINERS WITH 40 TONS EACH.

CARACTERISTICAS PRINCIPALES MAIN DIMENSIONS
ESLORA TOTAL (LENGTH OVER ALL) 188.00 MTS
" ENTRE PERPENDICULARES (LENGTH BETW B.P.) 175.00 "
" DE ESCANTILLONADO (SCANTLING LENGTH) 175.00 "
" MANSA DE TRAZADO (BREADTH MOULDED) 27.00 "
" PUNIAL " A LA CUB. SHELTER (DEPTH MOULDED TO UPPER DECK) 16.70 "
" " " " " PRINCIPAL " " MAIN DECK) 12.20 "
" CALADO DE ESCANTILLONADO (SCANTLING DRAUGHT) 9.50 "

TECNOR OFICINA TECNICA INDUSTRIAL Y NAVAL (INGENIEROS CONSULTORES)			
PROYECTO N°	110753	CON-RO-LO TIPO	
PLANO N°	01005	T-A175 DE 1900 T.P.M.	
REVISION	B	CUADERNA MAESTRA	
ESCALA	1:75 y 1:20	MIDSHIP SECTION	
N° DE HOJAS	DESARROLLADO	HOMBRE	EL INGENIERO
PROYECTADO	1		
DISEÑADO		M. C. GONZALEZ	
HOJA N°	1		
CALEADO	1		
COMPROBADO			
" SI O N O " SE RESERVA EL DERECHO DE PROPIEDAD DE ESTA DOCUMENTACION, PROHIBIENDOSE SU REPRODUCCION O ENTREGA A TERCEROS SIN SU PREVIA AUTORIZACION.			