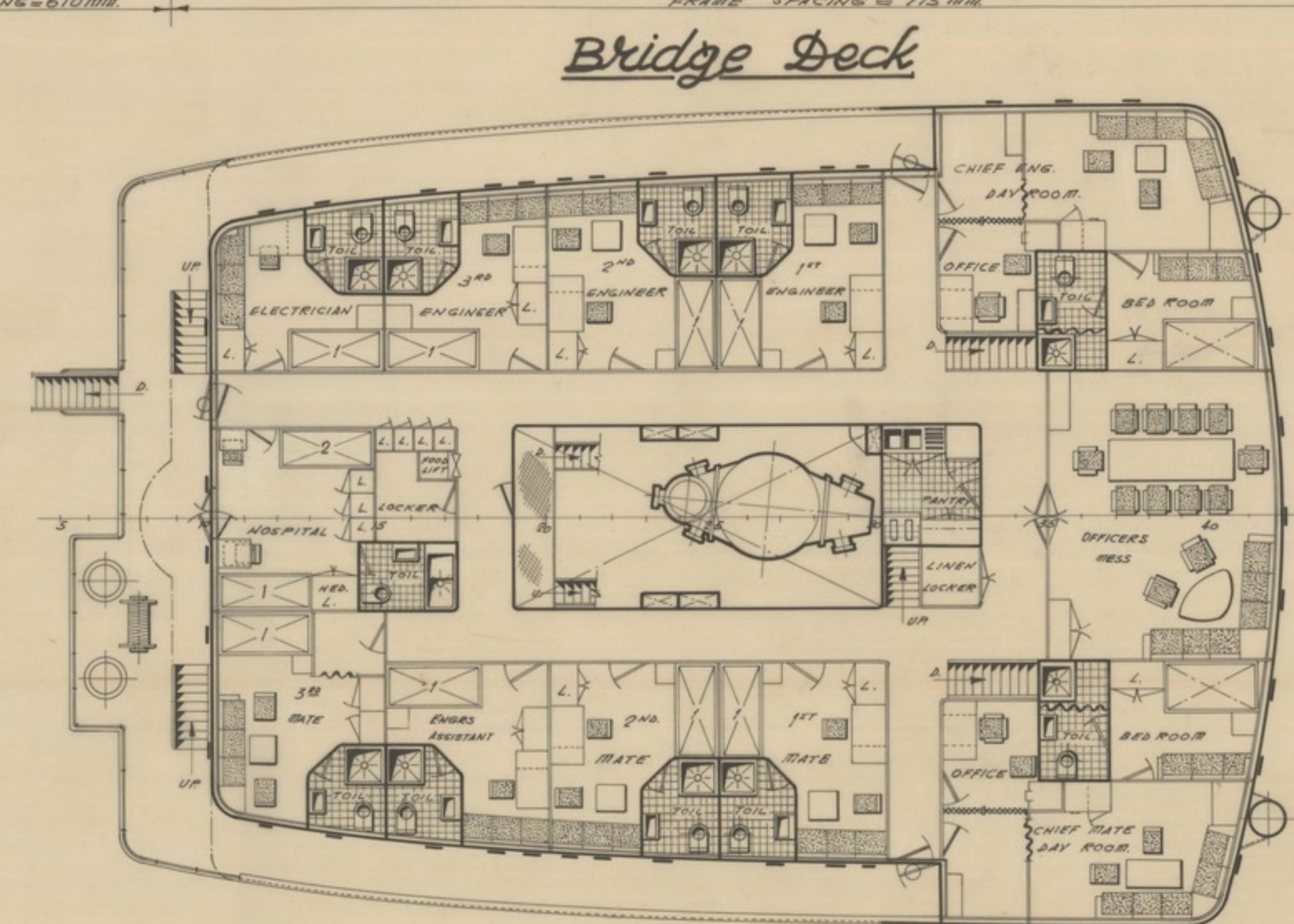
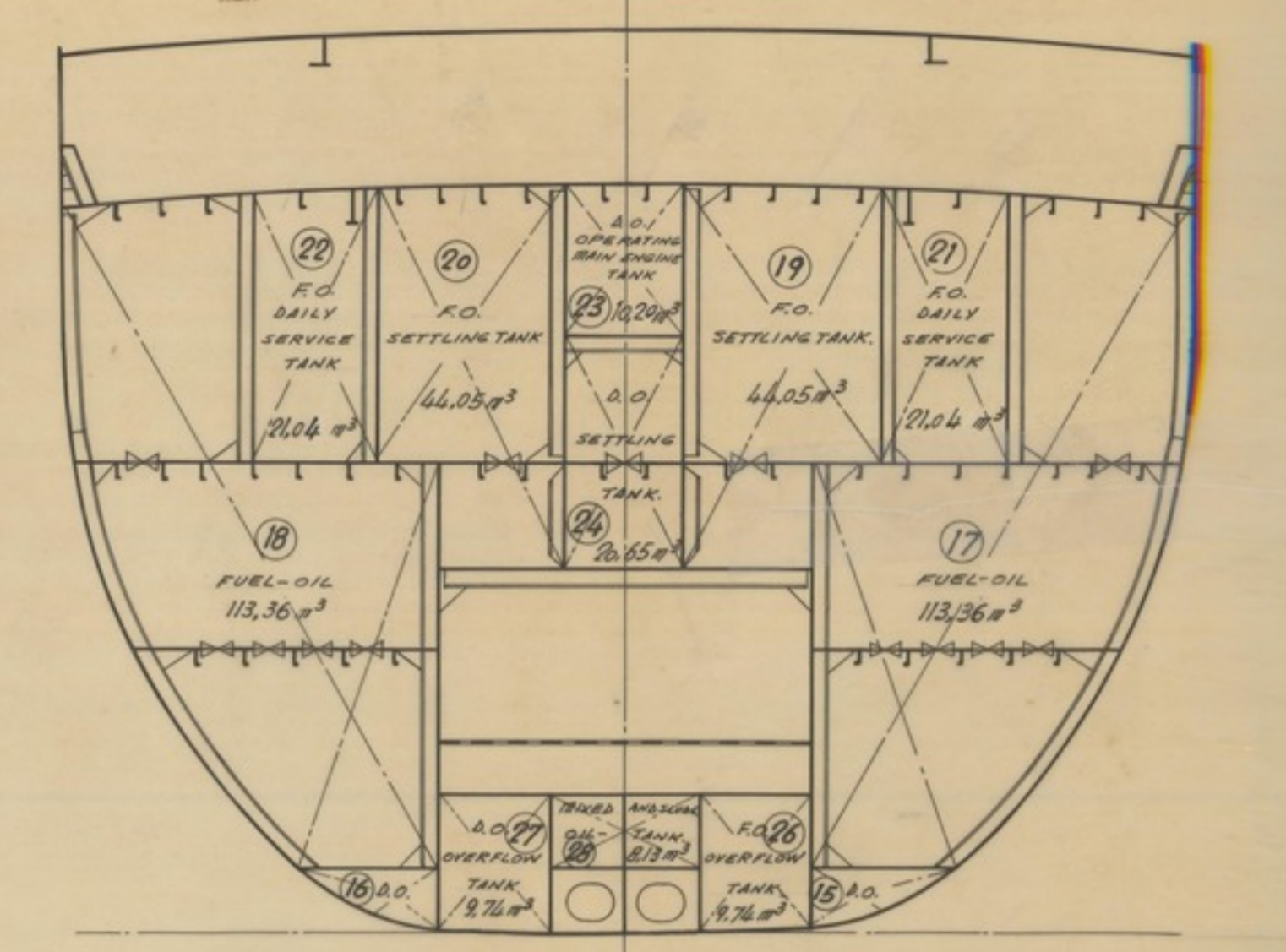
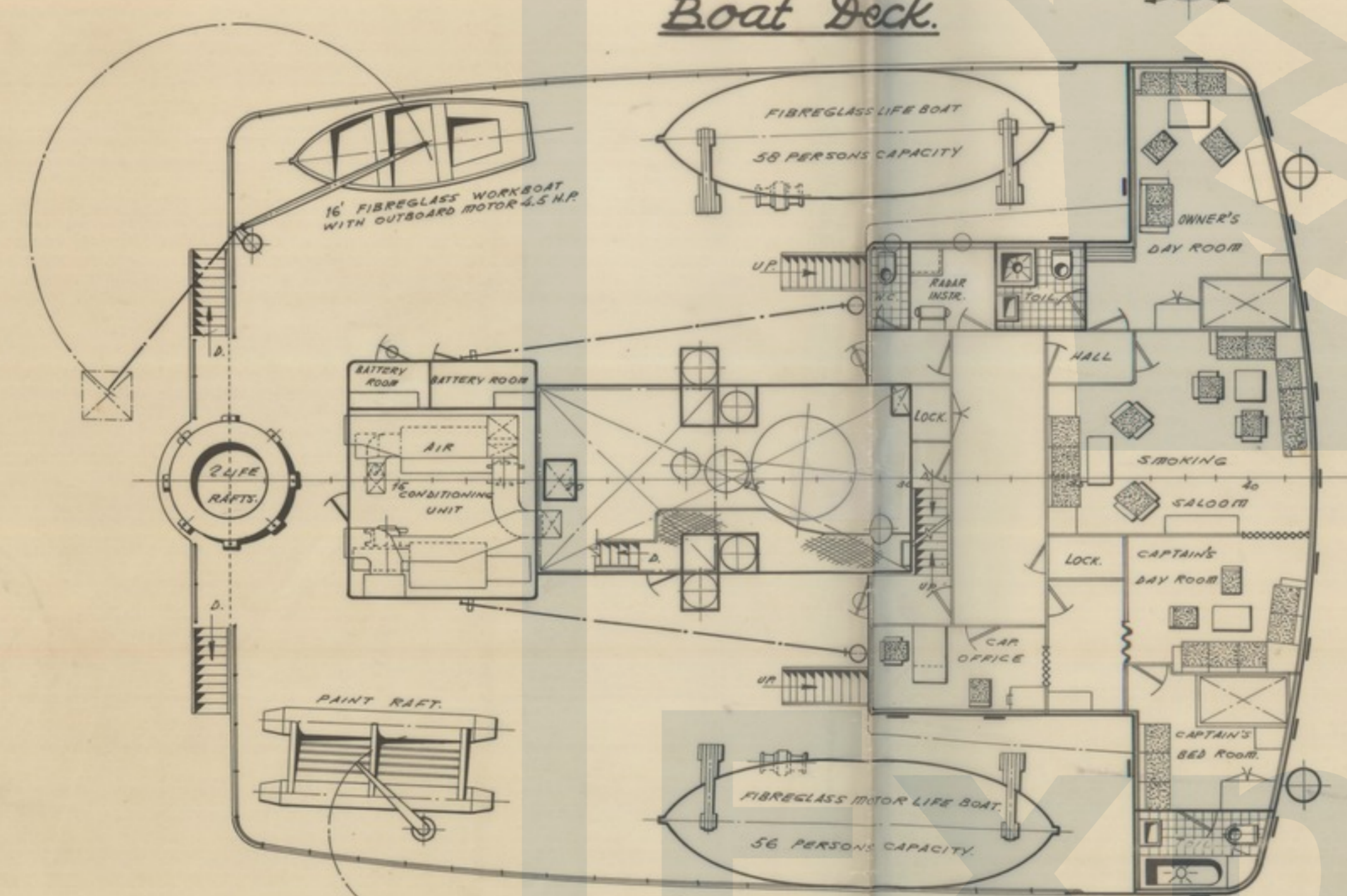


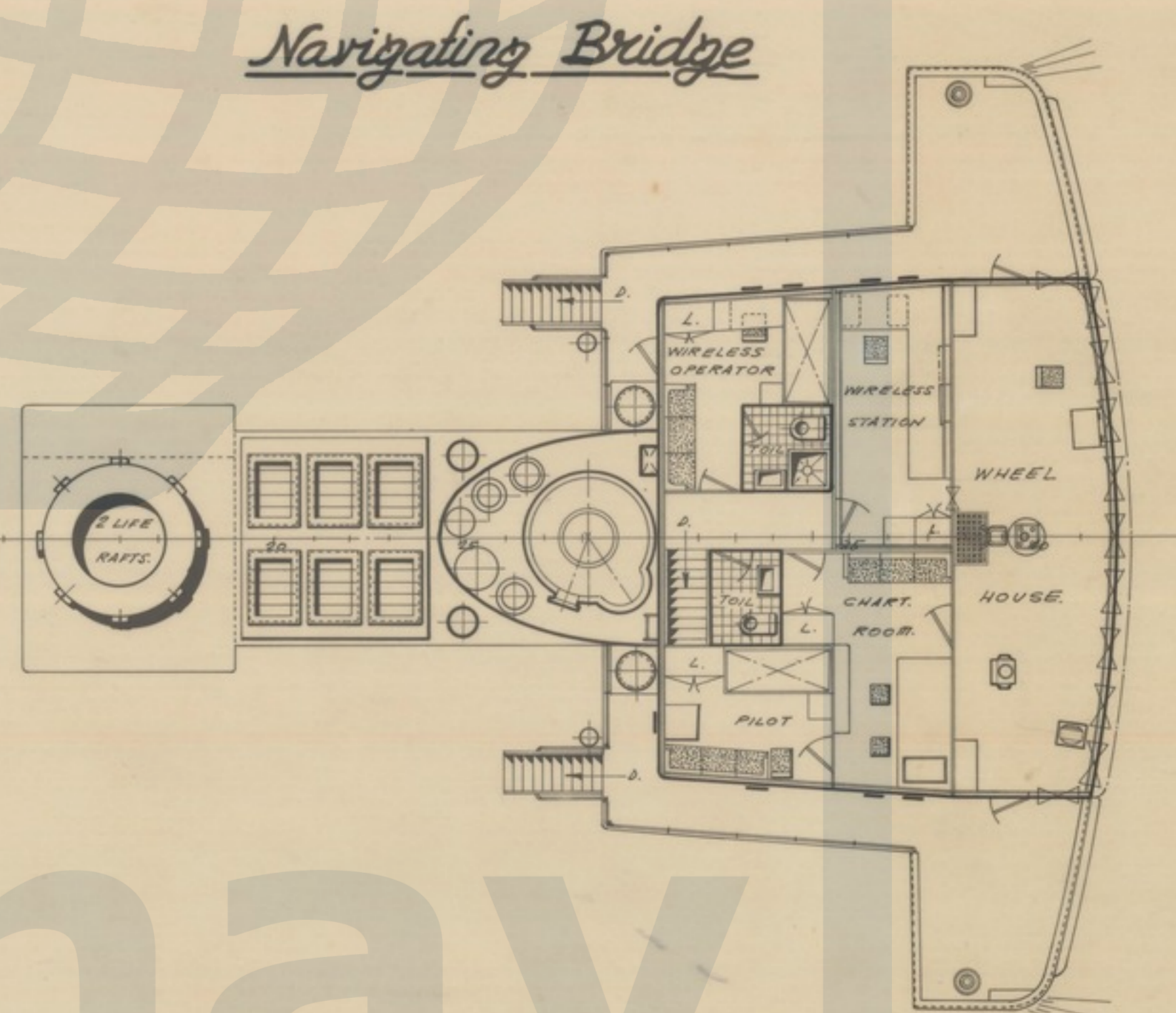
Section at frame-42
Looking aft.



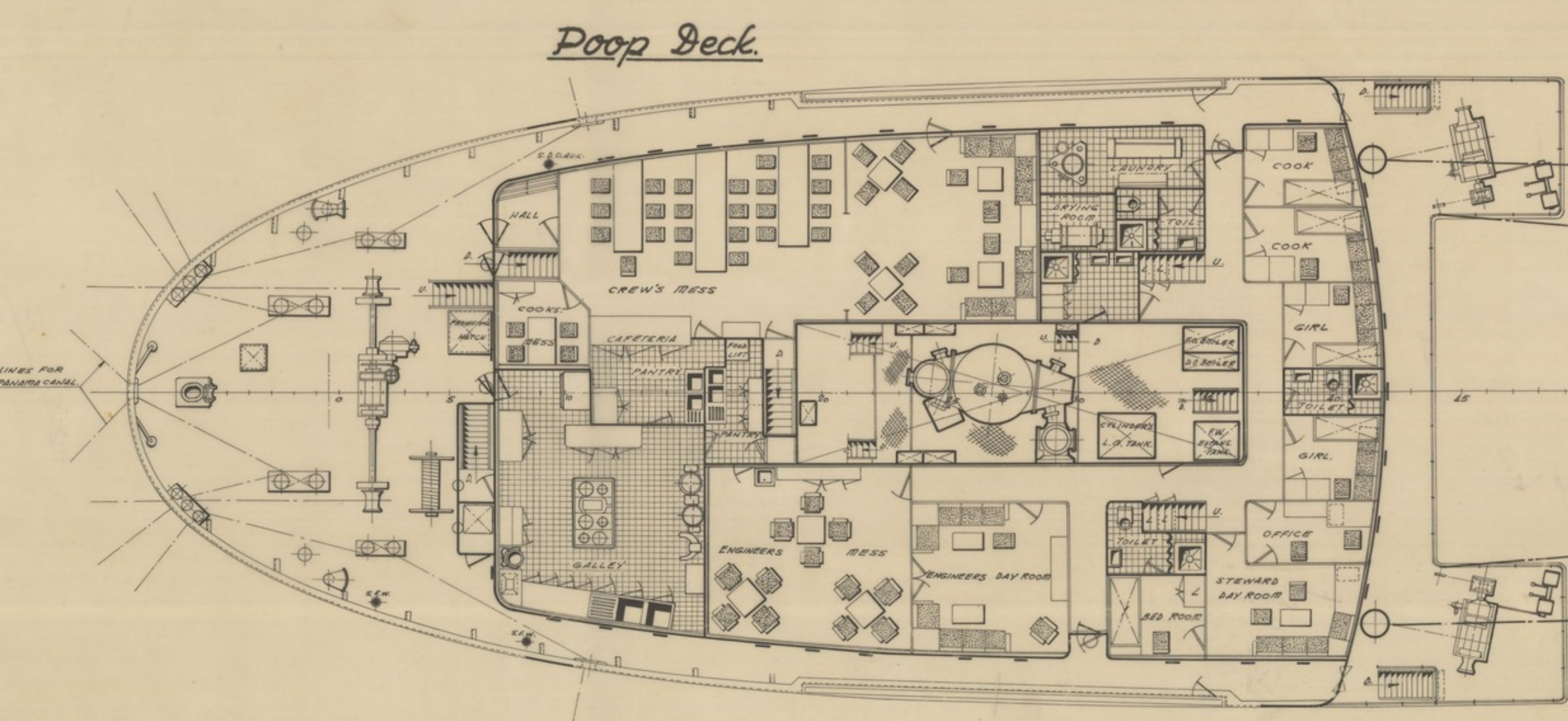
Bridge Deck



Boat Deck



Navigating Bridge

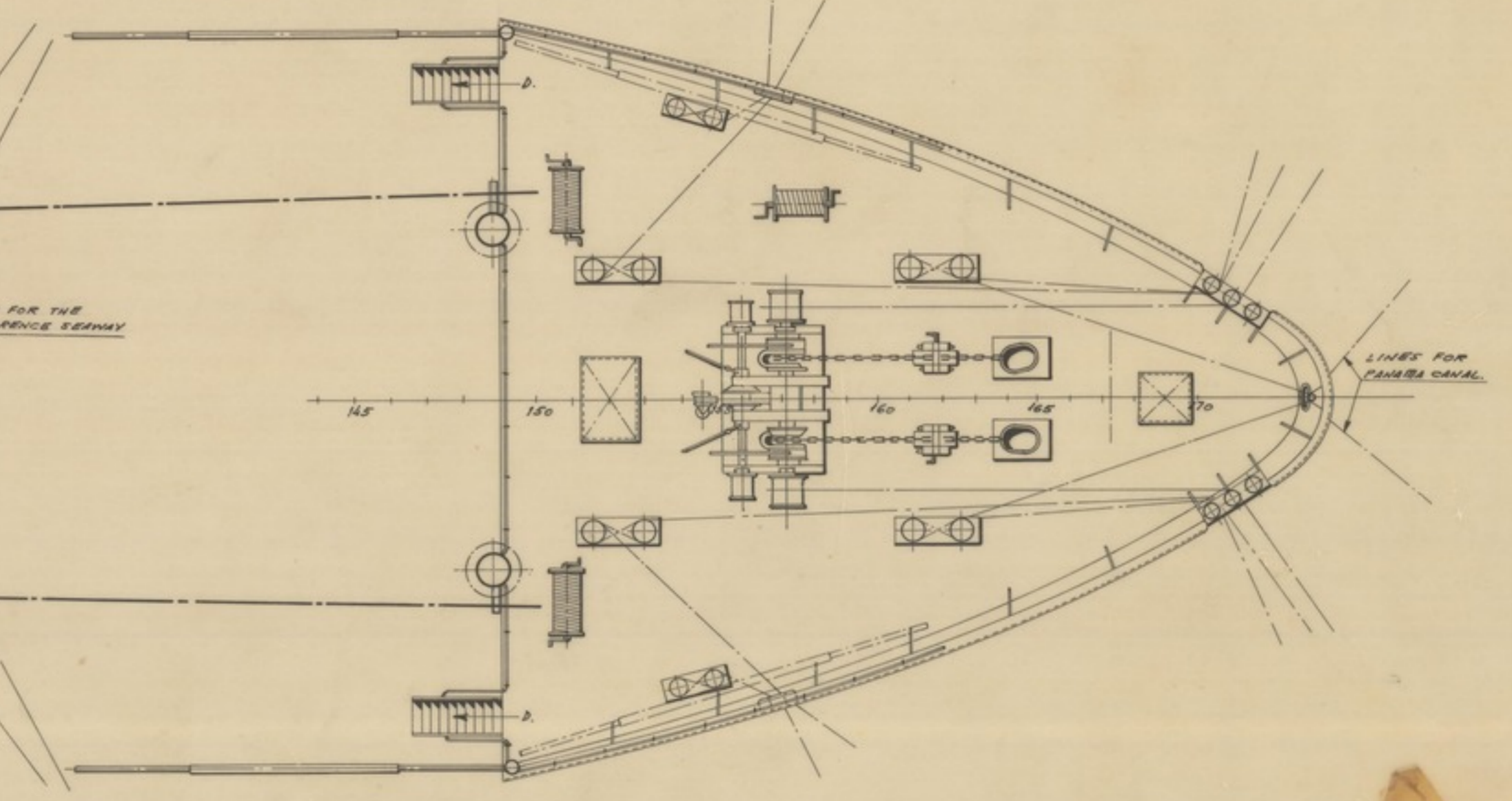


Poop Deck

Witch's Platform

Witch's Platform

Witch's Platform



Forecastle Deck

Main Characteristics

LENGTH OVER ALL	107,500 m.
LENGTH BETWEEN PT.	117,400 "
BREADTH MOULDED	17,600 "
DEPTH TO SHELTER DECK	10,900 "
DEPTH MAIN DECK	7,890 "
DEADWEIGHT OPEN SHELTER DECK	5,988 tons
CORRESPONDING DRAUGHT	6,976 m.
DEADWEIGHT CLOSED SHELTERDECK	8,288 tons
CORRESPONDING DRAUGHT	8,222 m.
GROSS REGISTER (INTERNATIONAL)	658,980 tons
NET REGISTER (INTERNATIONAL)	555,000 "
TOTAL HOLD CAPACITY (GRAIN) (WITHOUT RESERVE)	114,500 m ³ (3,427,780 cu. ft.)
FRESH WATER CAPACITY	13,665 "
FUEL-OIL CAPACITY	777,735 "
DIESEL-OIL CAPACITY	728,791 "
WATER BALLAST CAPACITY	200,445 "
LUBRICATION OIL CAPACITY	42,788 "
S.W.P. MAXIMUM AT 125 R.P.M.	5,800 "
SPEED IN SERVICE AS CLOSED DIESELMECH.	15.5 knots

DESIGNED BY	1919	CLASSIFICATION	11/100
CONTRACT NO.	BUQUE-167	REGISTRATION NO.	11/100
DATE	1/100	REGISTRATION NO.	11/100
DESIGNED BY	J. Reuter	REGISTRATION NO.	11/100
DATE	1/100	REGISTRATION NO.	11/100

ASTA

DIESEL CARGO SHIP
6000/8300 TONS D.W.
General Arrangement

PR-8904/b
1 2