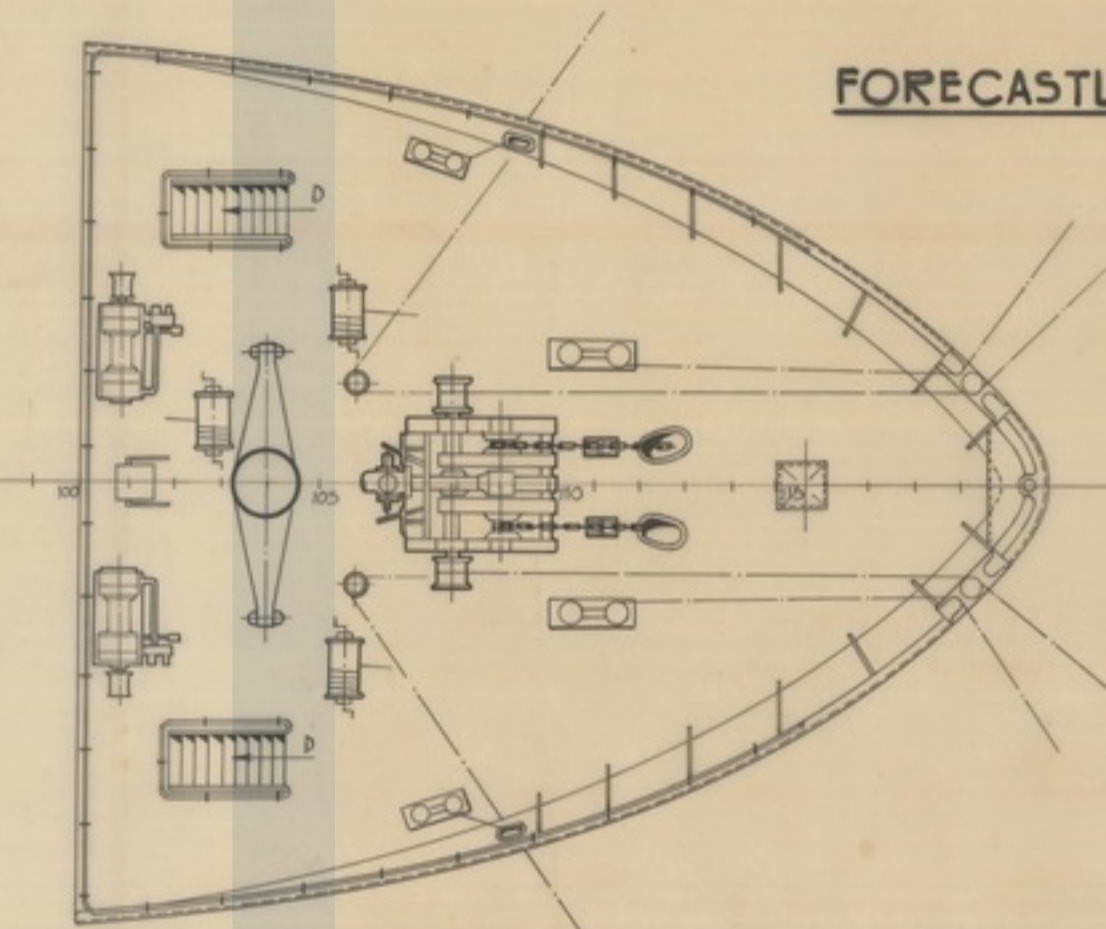
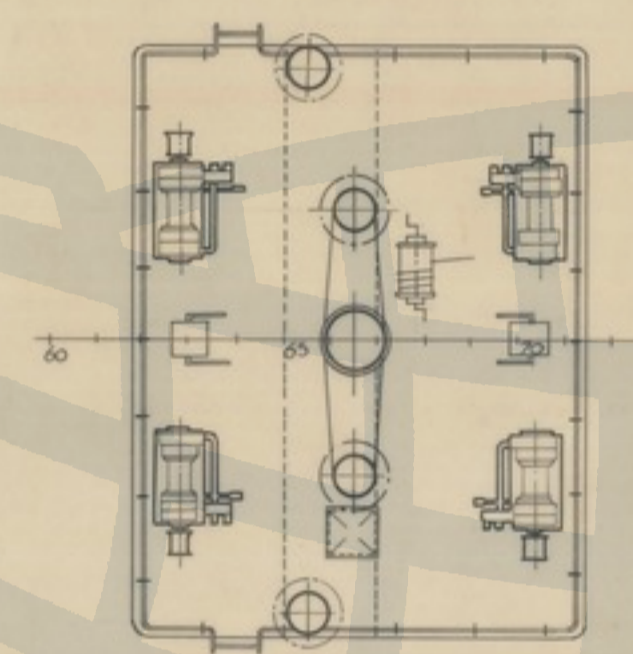
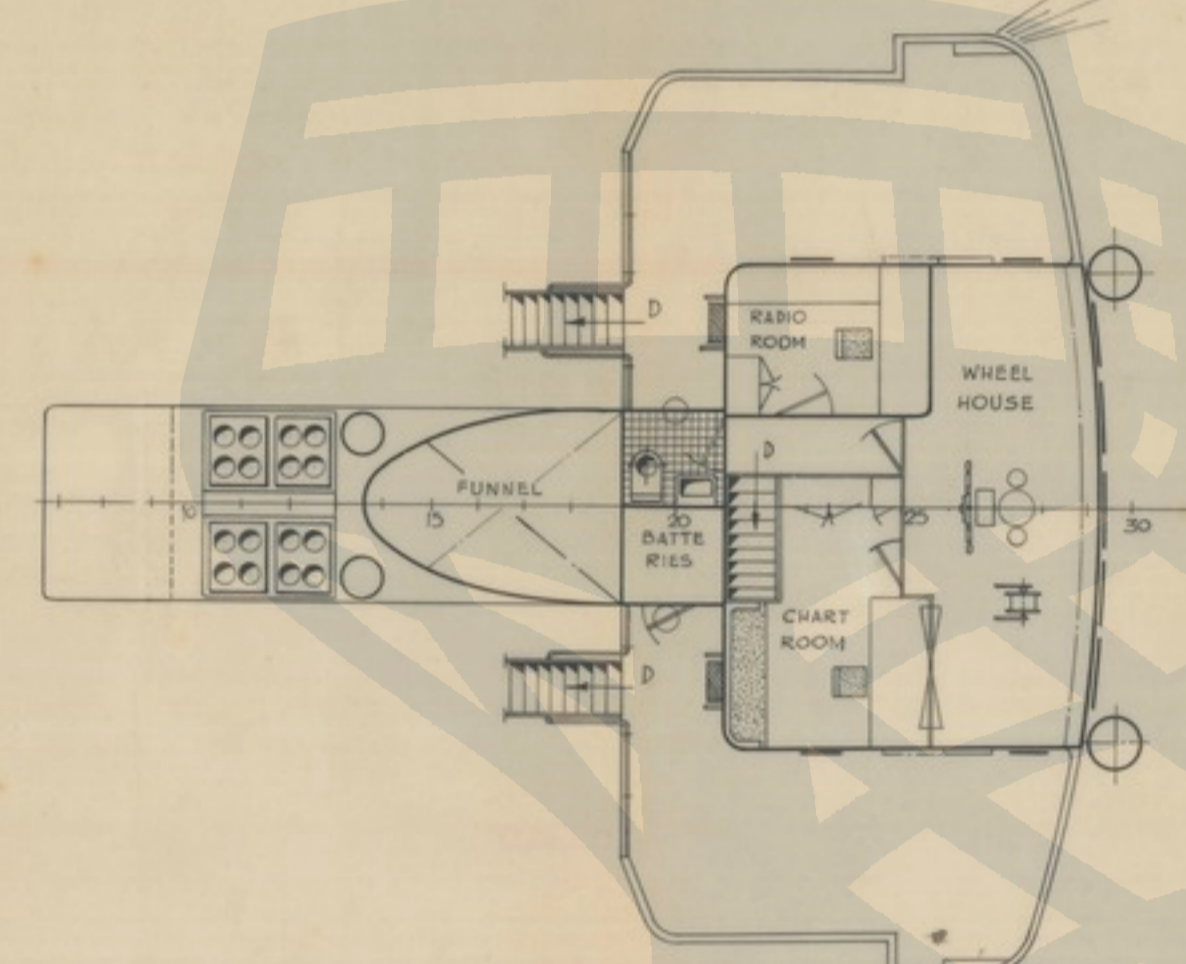
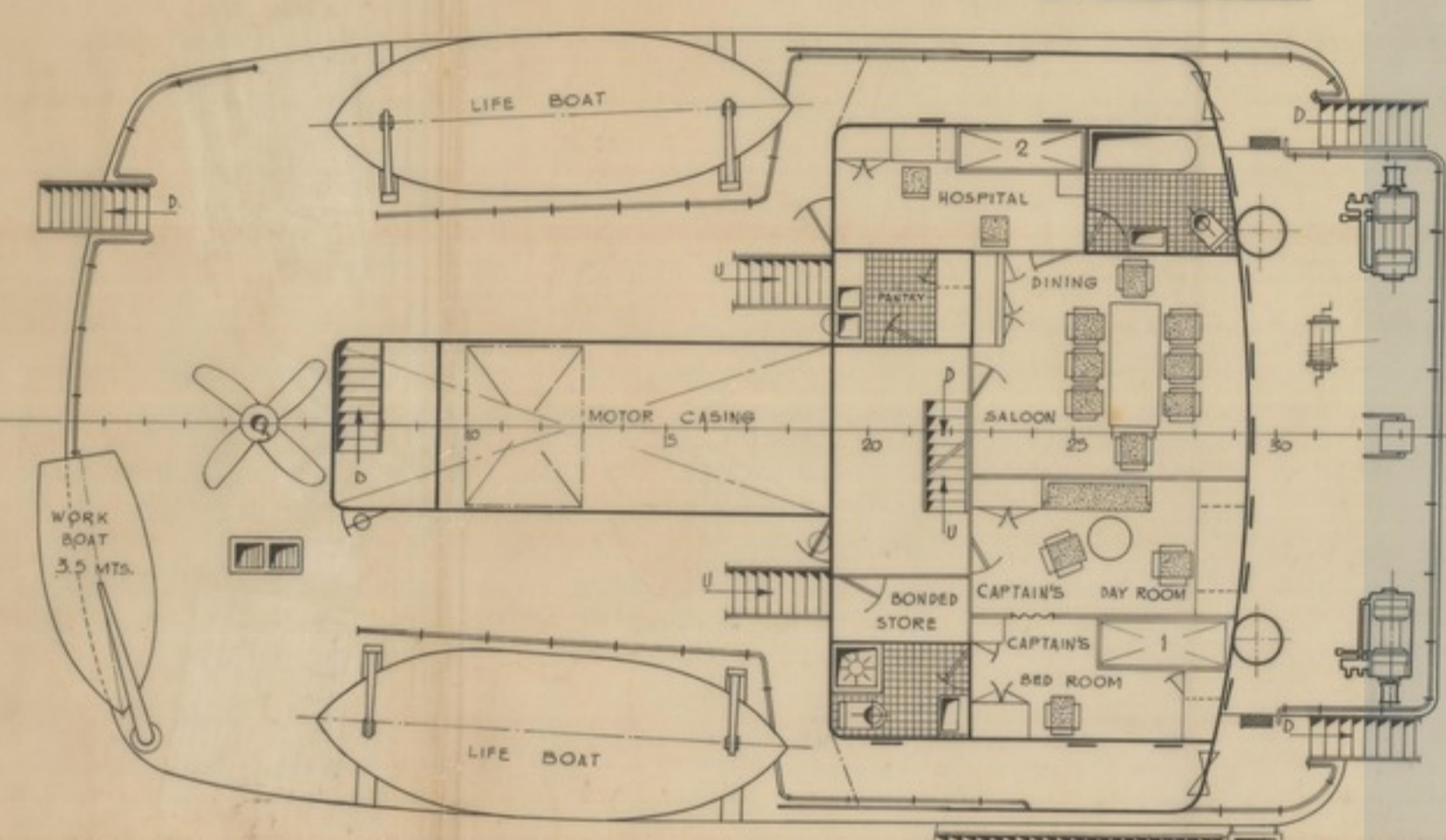


BOAT DECK

BRIDGE DECK

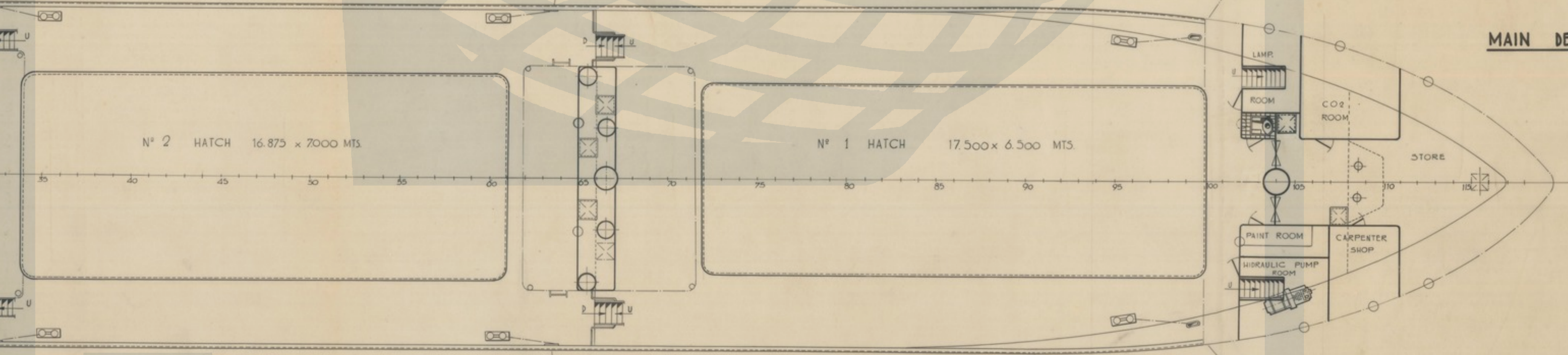
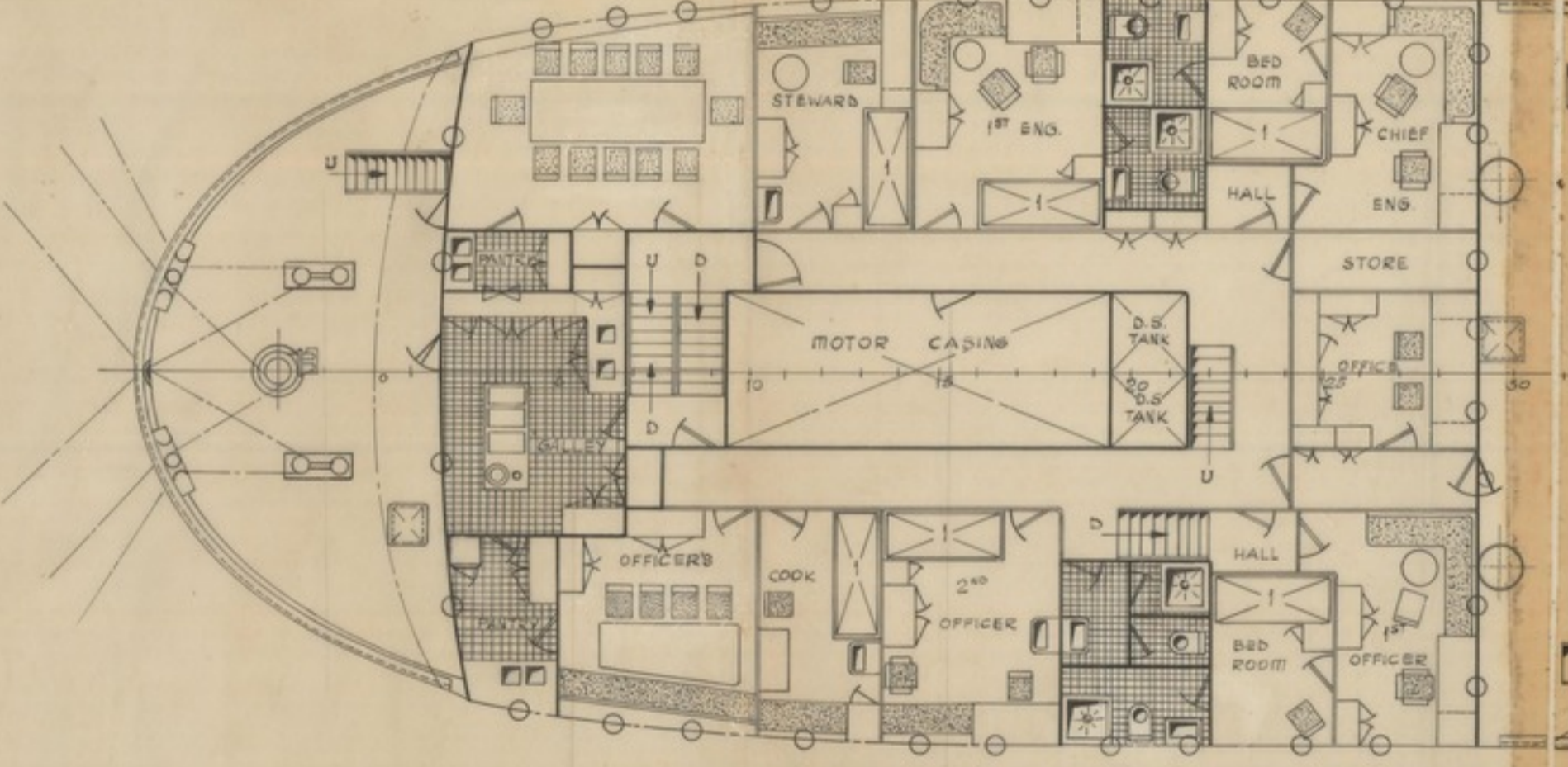
WINCH'S PLATFORM

FORECASTLE DECK

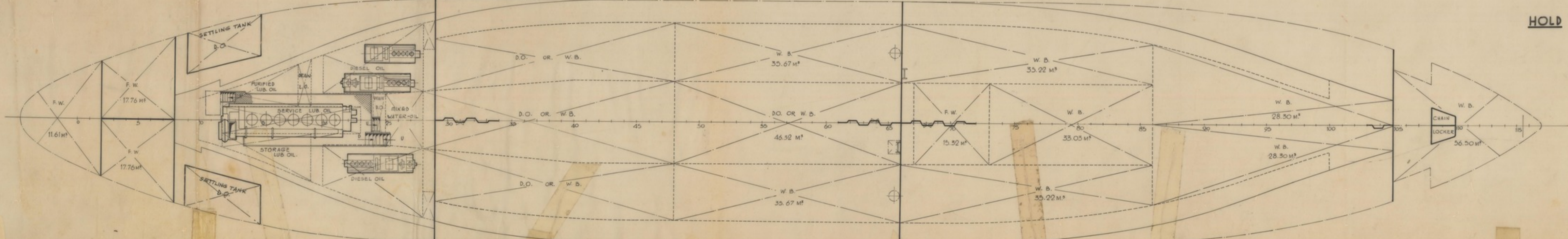
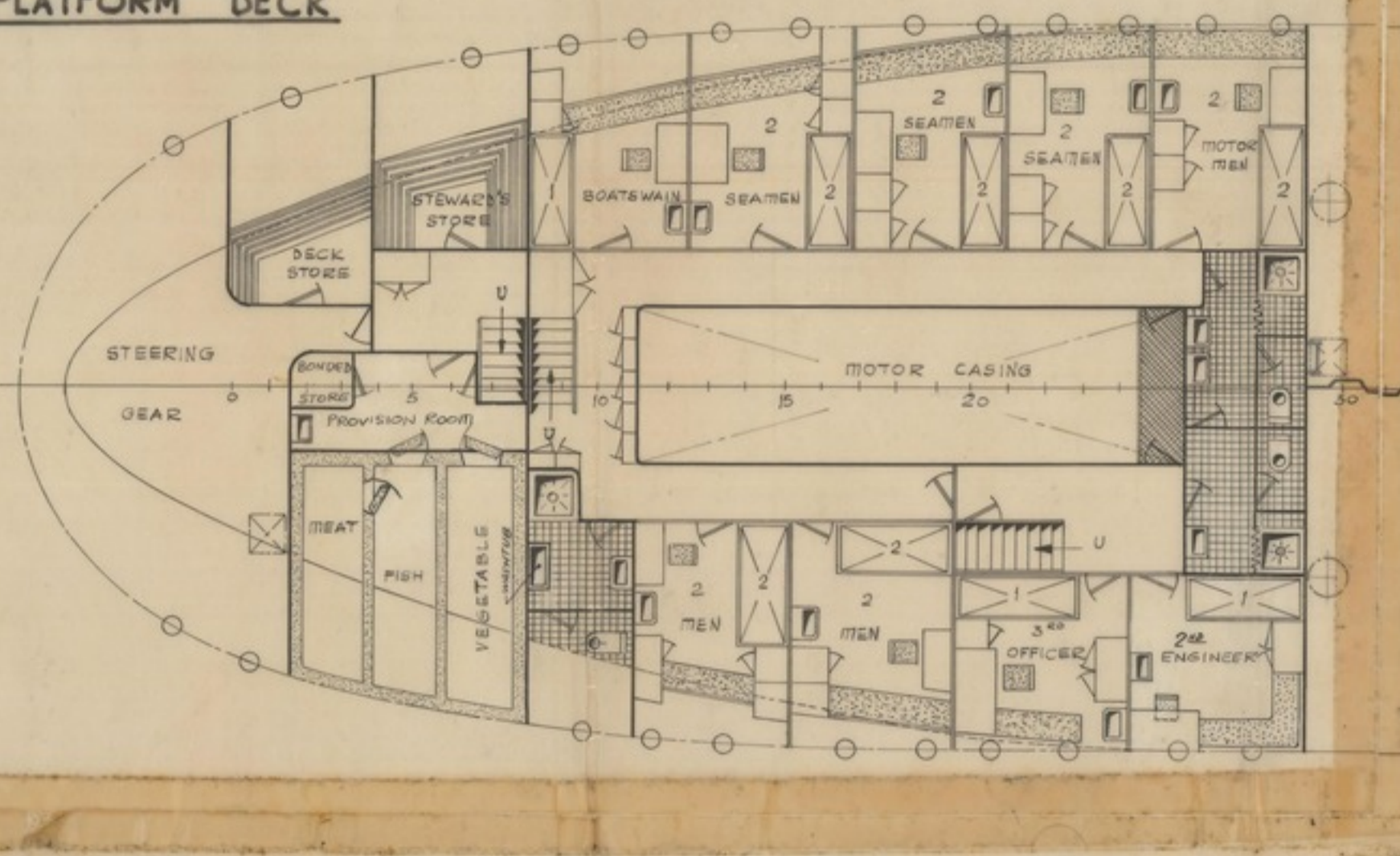
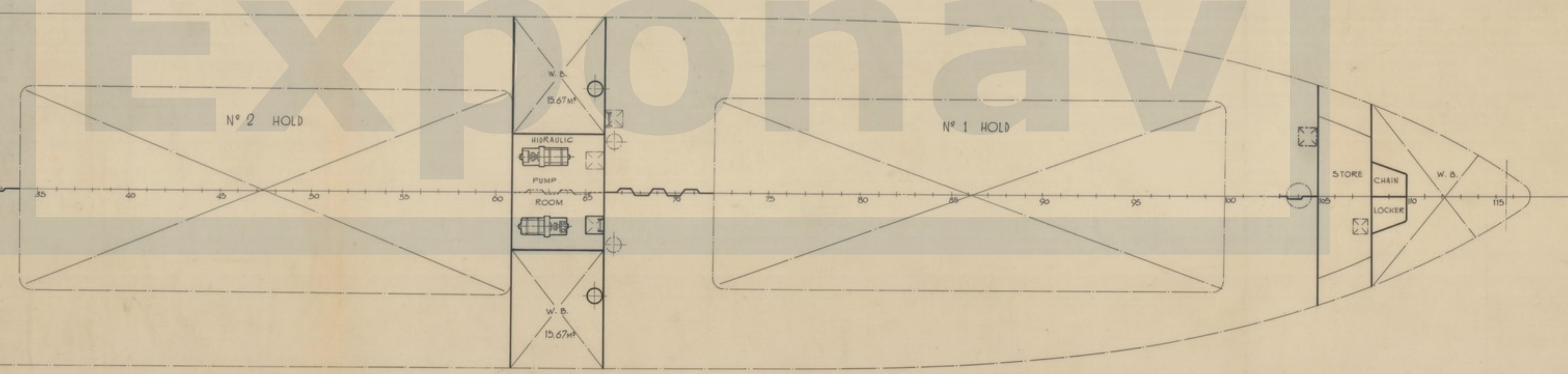


RAISED QUARTER DECK

MAIN DECK



PLATFORM DECK



ANULADO

MAIN CHARACTERISTICS

LENGTH OVERALL	79.12 MTS
LENGTH BETWEEN PERP.	72.00 "
BREADTH MOULDED	12.00 "
DEPTH	5.48 - 6.74 "
DRAUGHT WITH TIMBER FREEBOARD	5.15 "
DEADWEIGHT	2700 TONS
HOLDS - TOTAL BALE	2896 M <sup>3</sup> ~ 102.270 CU FT
HOLDS - TOTAL GRAIN	3064 M <sup>3</sup> ~ 108.210 CU FT
FRESH WATER	62 M <sup>3</sup>
DIESEL OIL	227 M <sup>3</sup>
BALLAST (TANKS BALLAST ONLY)	319 M <sup>3</sup>
B. H. P. MAXIMUM	1750 B.H.P.
TRIAL SPEED	12.5 KNOTS.

MODIFICACIONES		FECHA
1	W.C. y escalera ligeros de bodega para	17-8-62
2	Modificacion de algunos elementos en cuartos RAISED QUARTER y PLATFORM DECK	2-11-62

FECHA	17-V-1962	ORDEN	BUQUE - 161
ESCALA	1/100	RAISED QUARTER DECK	
<b>RAISED QUARTER DECK M.S. OF 2100 TONS D.W.</b> <i>General Arrangement.</i>			