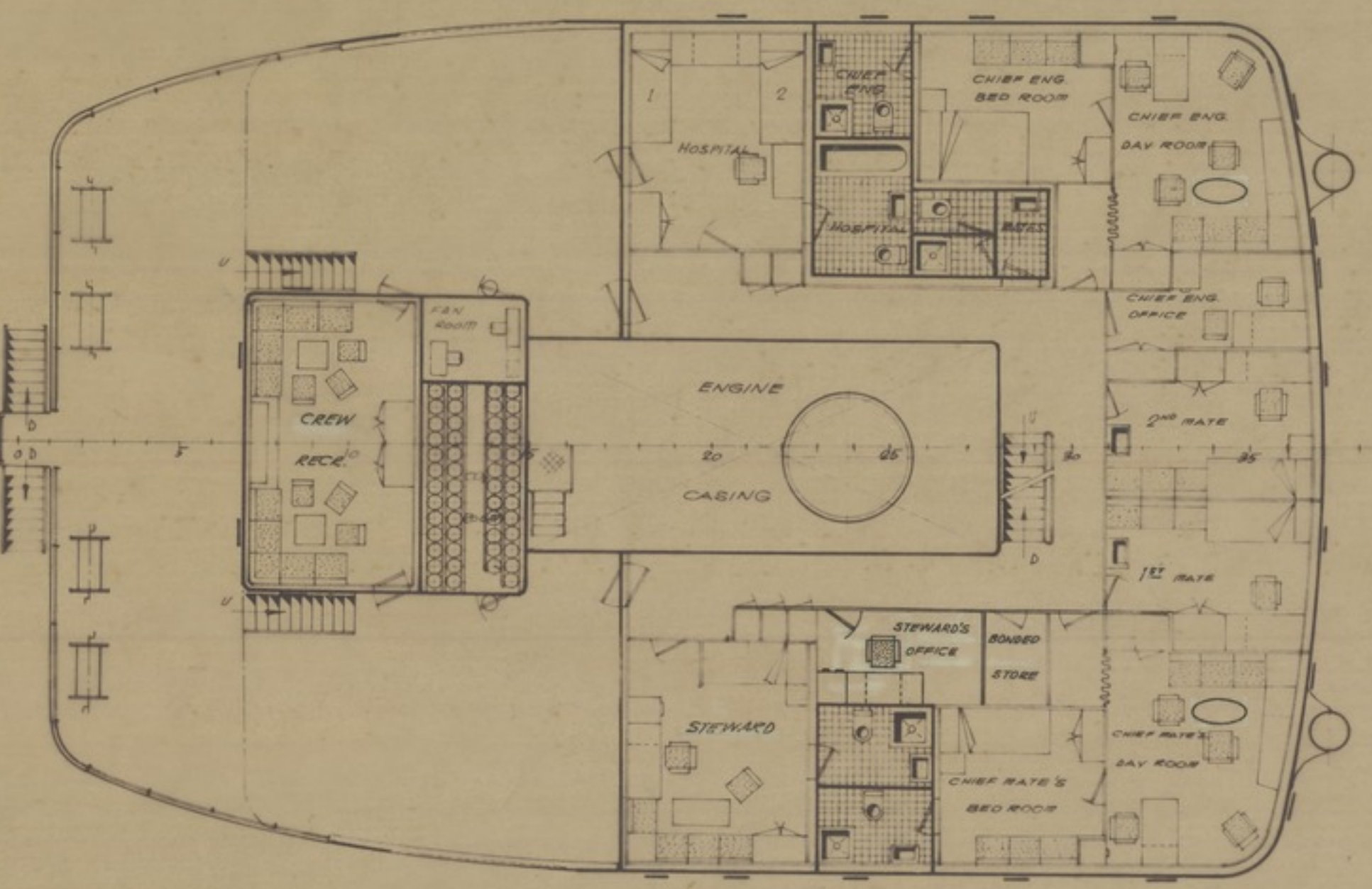


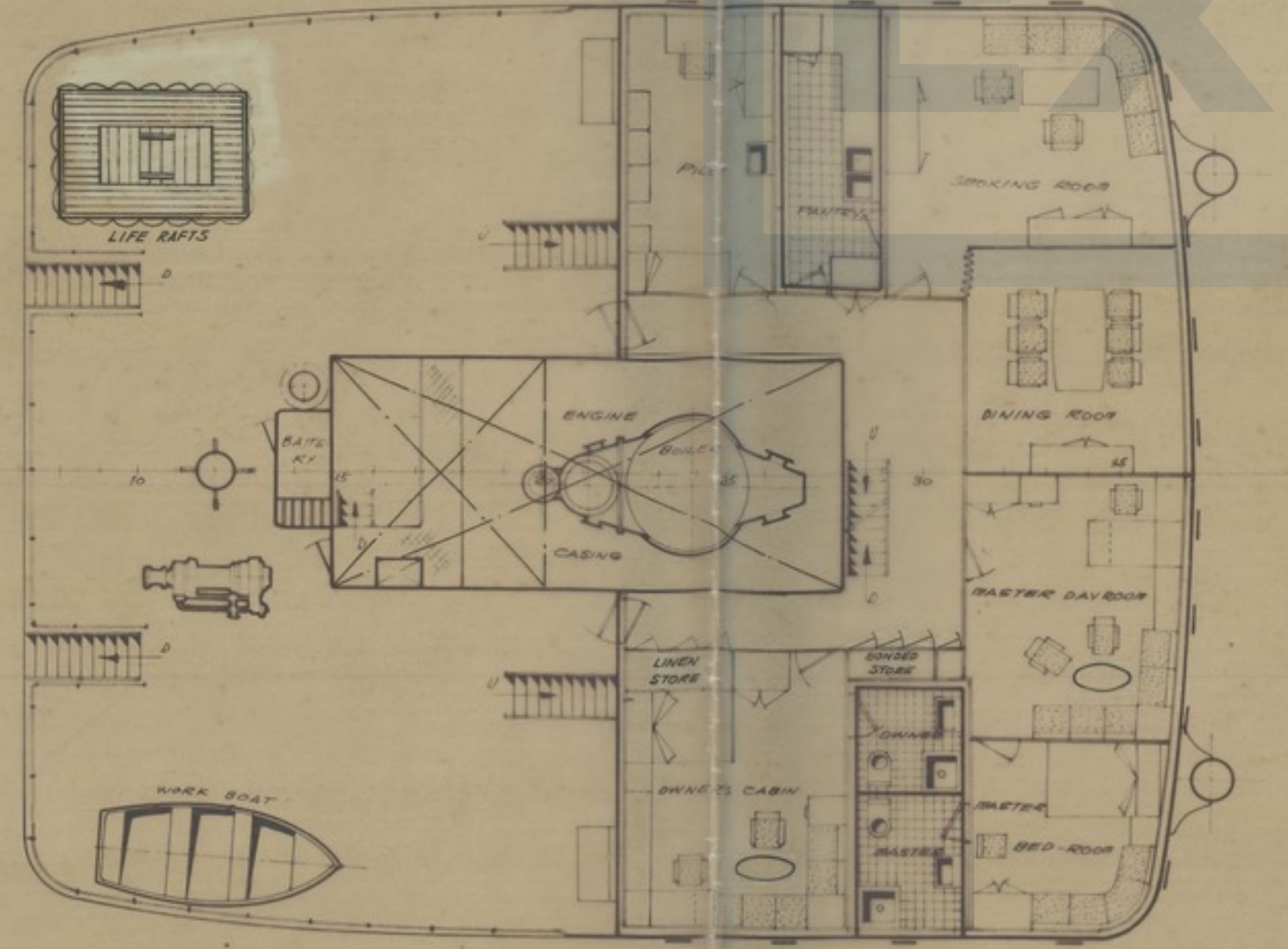
Characteristics

LENGTH OVER ALL	107.15 MTS
LENGTH BETWEEN PERP.	98.00 "
BREADTH BULWARK	16.00 "
DEPTH TO SHELTER DECK	9.35 "
DEPTH TO MAIN DECK	6.70 "
DRAUGHT OPEN SHELTER DECK	6.457 MTS
CORRESPONDING DRAUGHT	4649.77 "
DRAUGHT CLOSED SHELTER DECK	6.097 MTS
CORRESPONDING DRAUGHT	7.527 MTS
GROSS TONNAGE AS CLOSED SHELTER DECK	4304.57 TONS
NET TONNAGE AS CLOSED SHELTER DECK	2209.95 "
TOTAL HOLD CAPACITY (GRAIN)	31116.2 CUB. FT.
FRESH WATER CAPACITY	112.55 TONS
FUEL AND DIESEL OIL CAPACITY	597.49 "
WATER BALLAST CAPACITY	1045.11 "
LUBRICATING OIL CAPACITY	4000 "
R.P.M. SAURER	150
TRIAL SPEED AS CLOSED SHELTER DECK (FULLY LOAD CONDITION)	14.5 KNOTS
TRIAL SPEED AS OPEN SHELTER DECK (FULLY LOAD CONDITION)	15.0 "

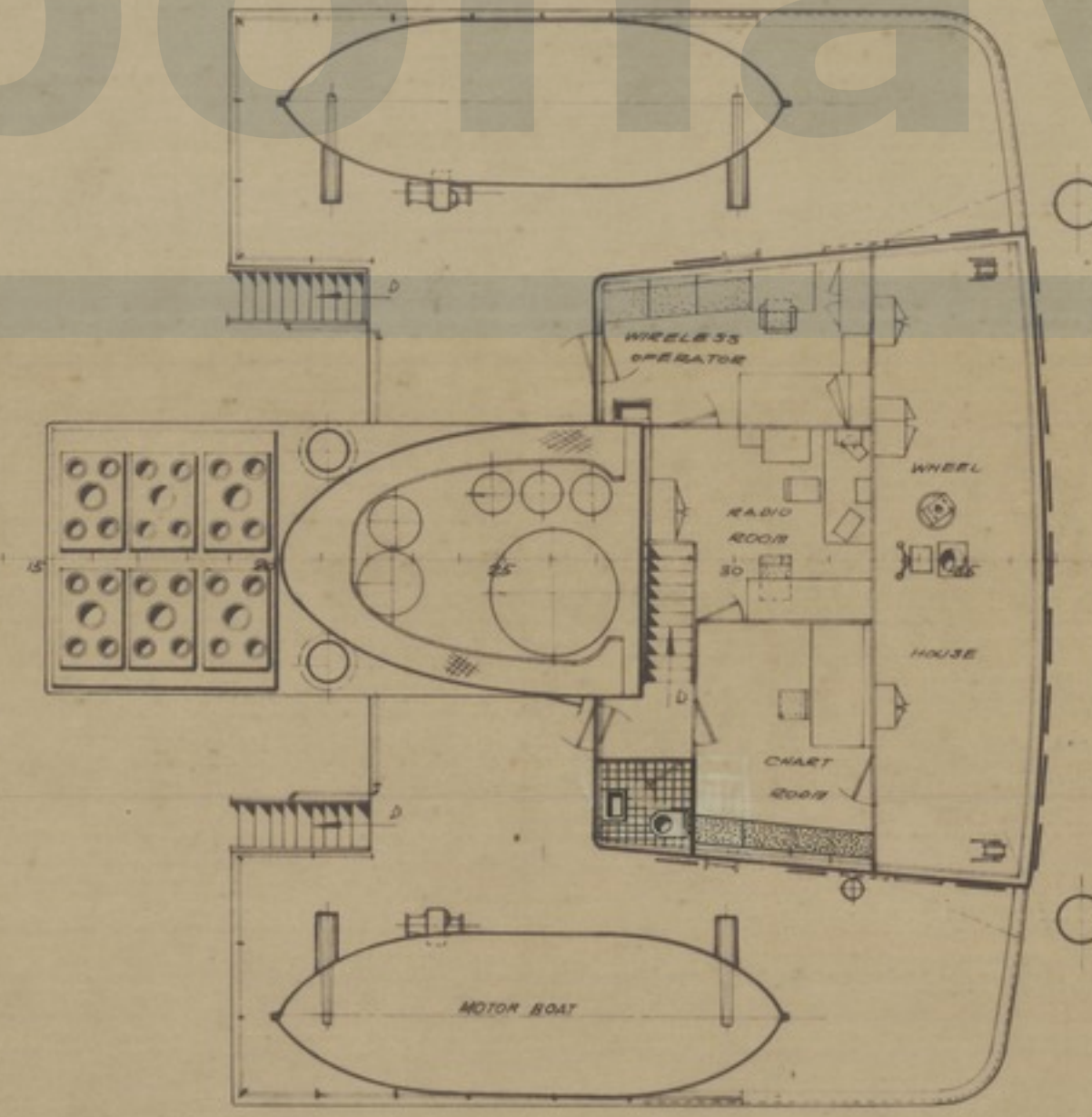
OFFICER'S DECK



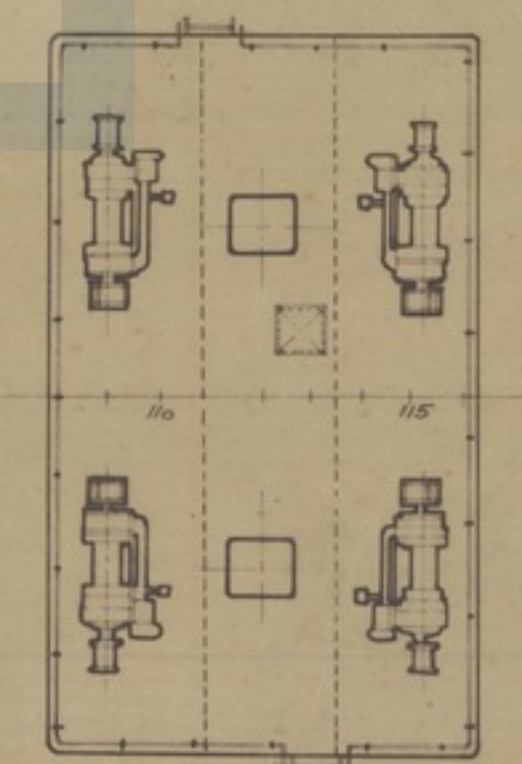
BOAT DECK



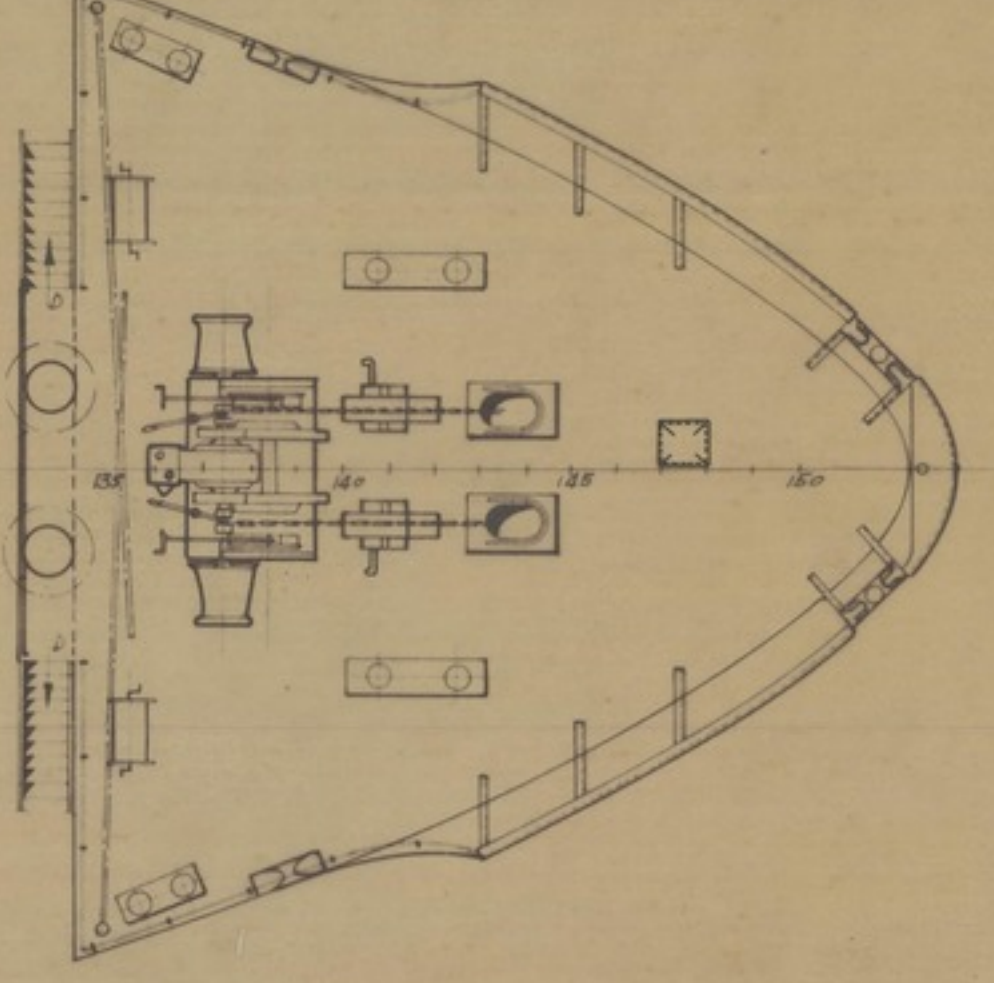
NAVIGATING BRIDGE



WINCH'S PLATFORMS



FORECASTLE



28 III-64	
NC-165	
1:100	
OPEN/CLOSED SHELTER DECK	PR-8804/D
OF 4600/6100 TONS. D.W.	1 2
GENERAL ARRANGEMENT	