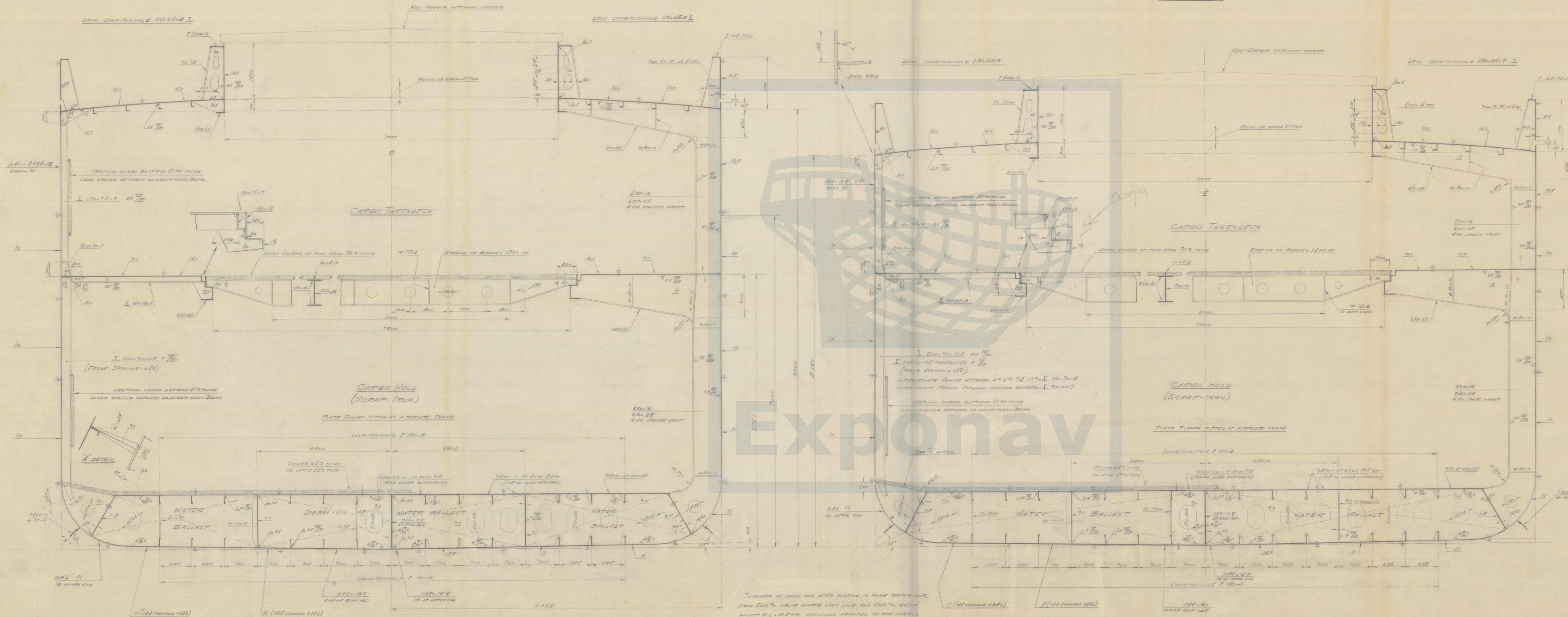


RAISED QUARTER DECK

MAIN DECK



PRINCIPAL CHARACTERISTICS

LENGTH OVERALL	96.450 MTS.
LENGTH WATER LINE	57.400 "
LENGTH BETWEEN PP	53.700 "
BREADTH MOULDED	13.800 "
DEPTH MOULDED TO UPPER DECK AND P.O.D.	8.250 MTS.
DEPTH MOULDED TO LOWER DECK	5.750 "
DRAUGHT	7.000 "
DISPLACEMENT (IN SEA WATER)	6.130 TNS

EQUIPMENT

EQUIPMENT NUMBER	0.805
LETTER	W
NUMBER OF BOW ANCHORS (STOWED)	3
COLLECTIVE WEIGHT	6.503 KGS
STOW CHAIN CABLE	LENGTH 465 MTS.
DIAMETER	49 MM.
TOWLINE	LENGTH 185 MTS.
MIN. TENSILE STRENGTH	40.000 KGS.
NUMBER	3
HANSERS	LENGTH OF EACH 105 MTS.
MIN. TENSILE STRENGTH	14.000 KGS.

CLASS

+ I A I T - 100/C (USED FOR CARGOES SCRAP-IRON)



Exponav

THICKNESS OF SHELL AND STEEL PLATING, IN PLACE RESPECTIVELY, FROM 500 MM ABOVE WATER LOAD LINE AND 500 MM BELOW BALLAST W.L. 15.5 MM, GRADUALLY REDUCED TO THE NOMINAL THICKNESS AT THE POSITION WHERE THE WATERLINES SHOW THEIR FULL BREADTH.

CALCULADO	FECHA 29-1-62	ORDEN	
DIBUJADO	BUQUE-100	ESCALA	1:25
COMPROBADO		BALIDA	30 September 1962
PLANO N.º	PR-86134	HOJAS	1/1
ENCUADRE		ESCALERA	
REVISOR		REVISOR	

CLOSED SHELTERDECKER WITH RAISED QUARTERDECK OF 4500 LONG TONS D.W. MIDSHIP SECTION.