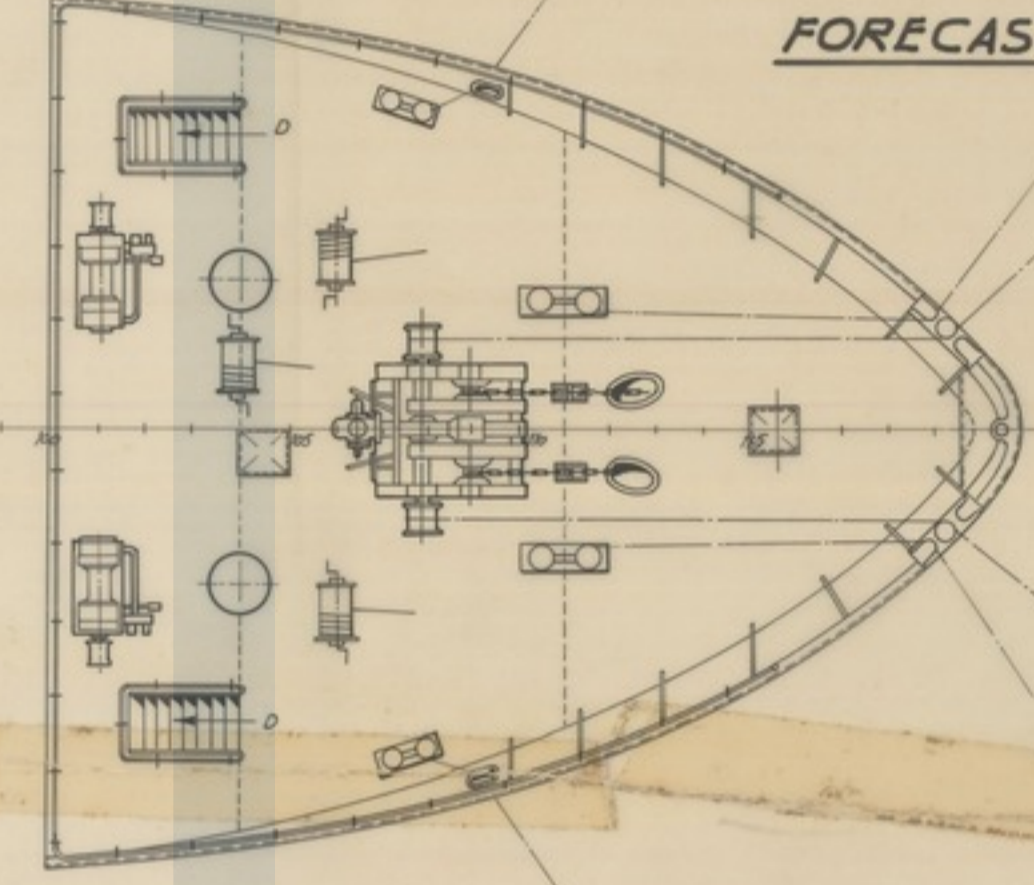
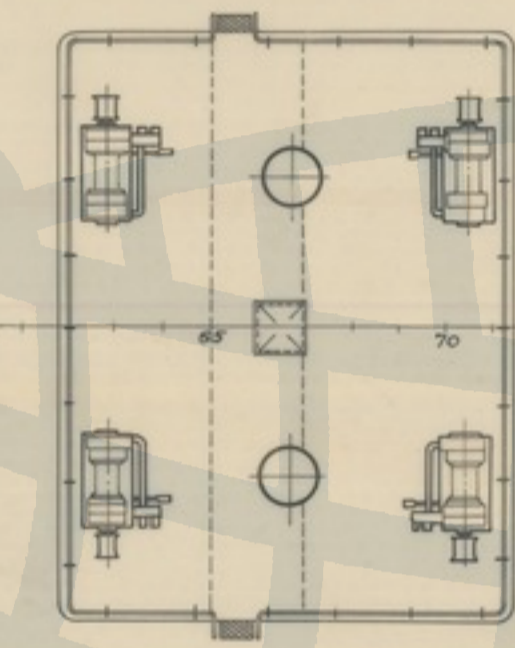
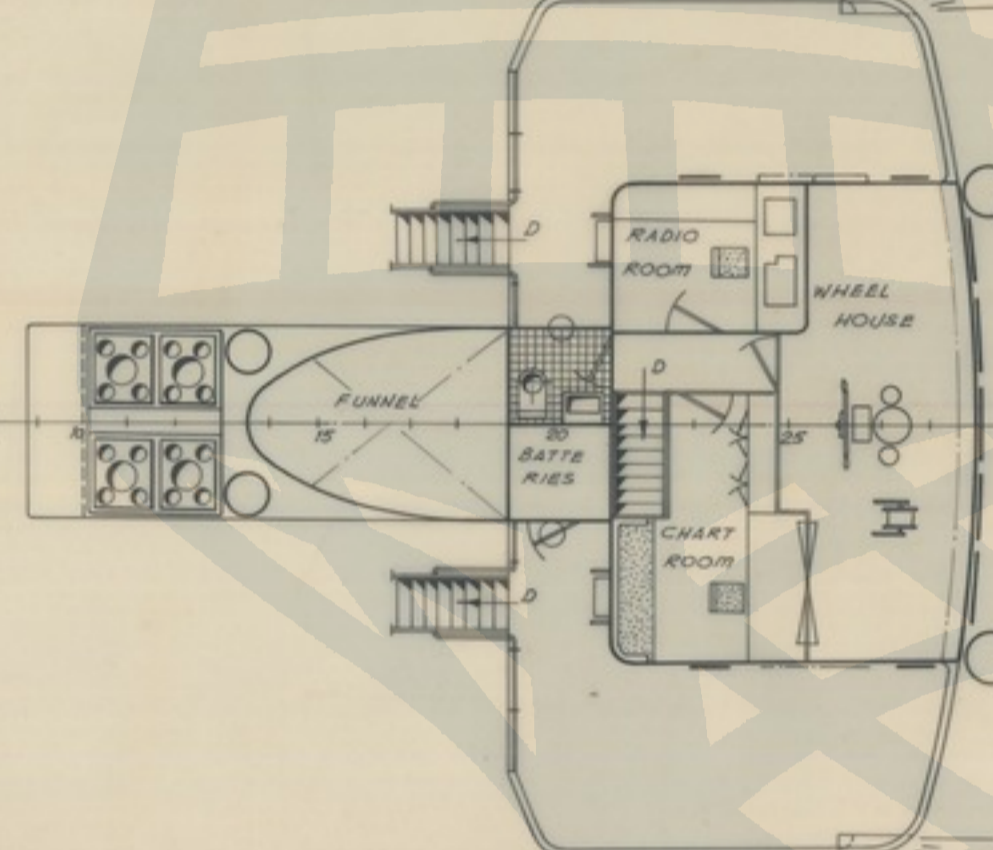
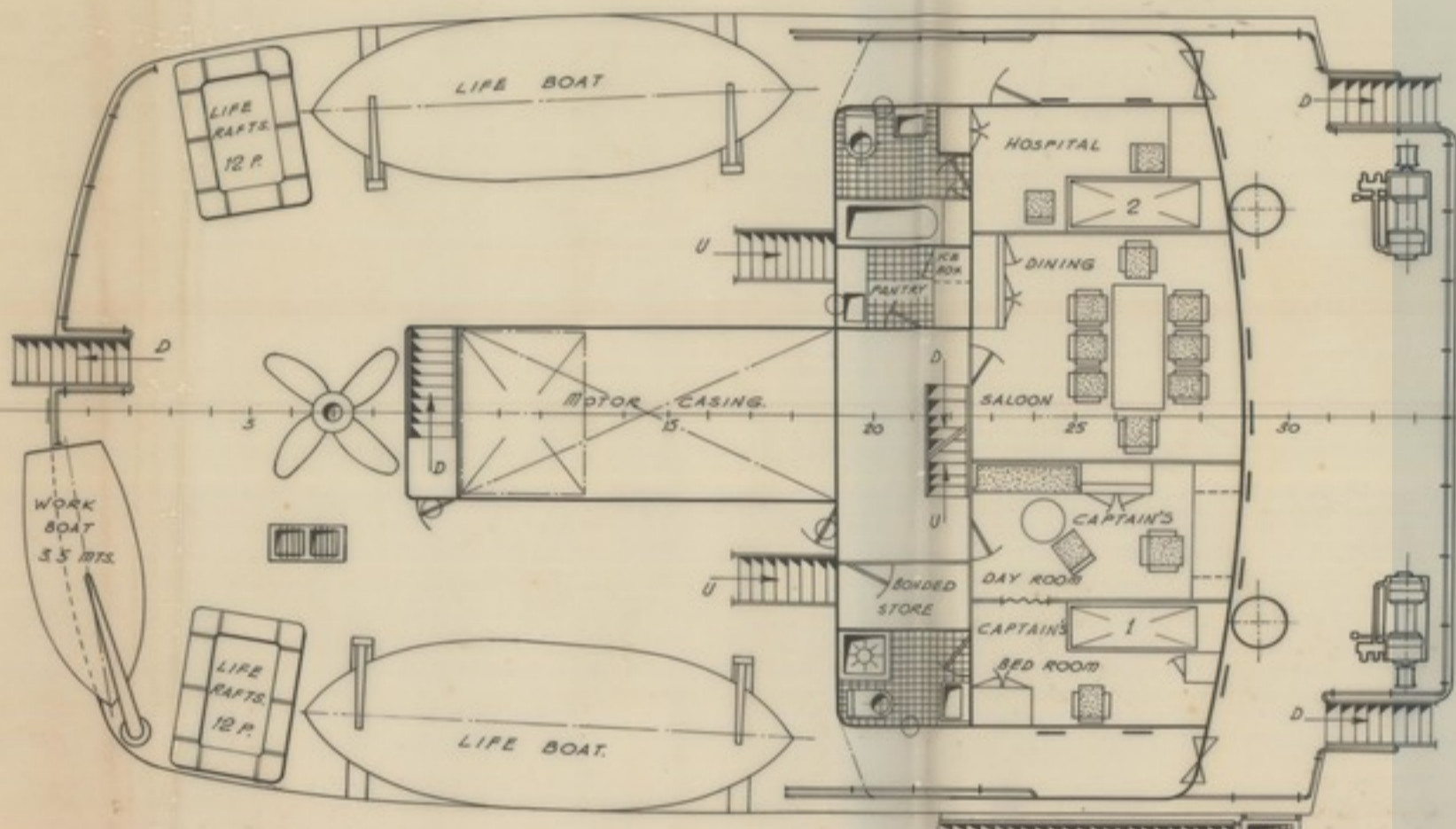


BOAT DECK

BRIDGE DECK

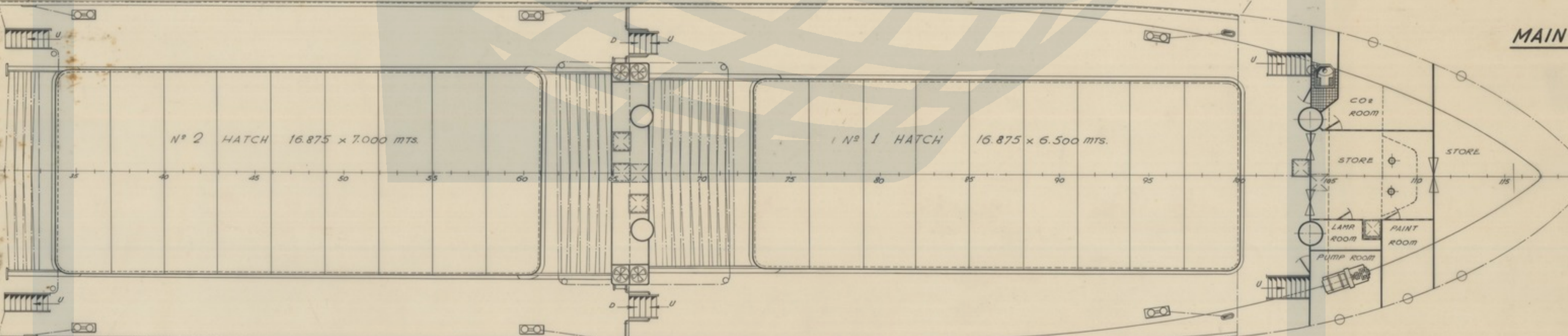
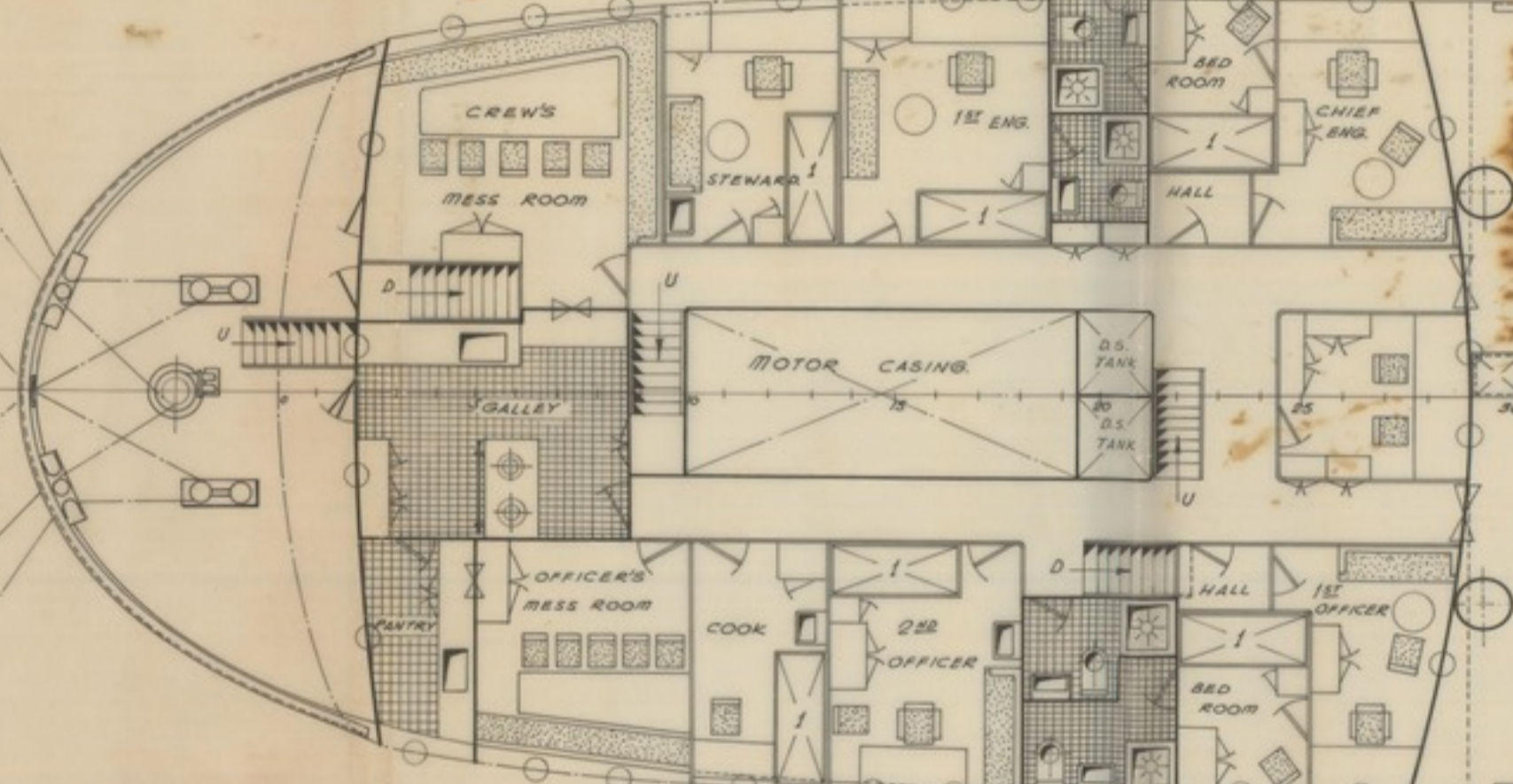
WINCH'S PLATFORM

FORECASTLE DECK

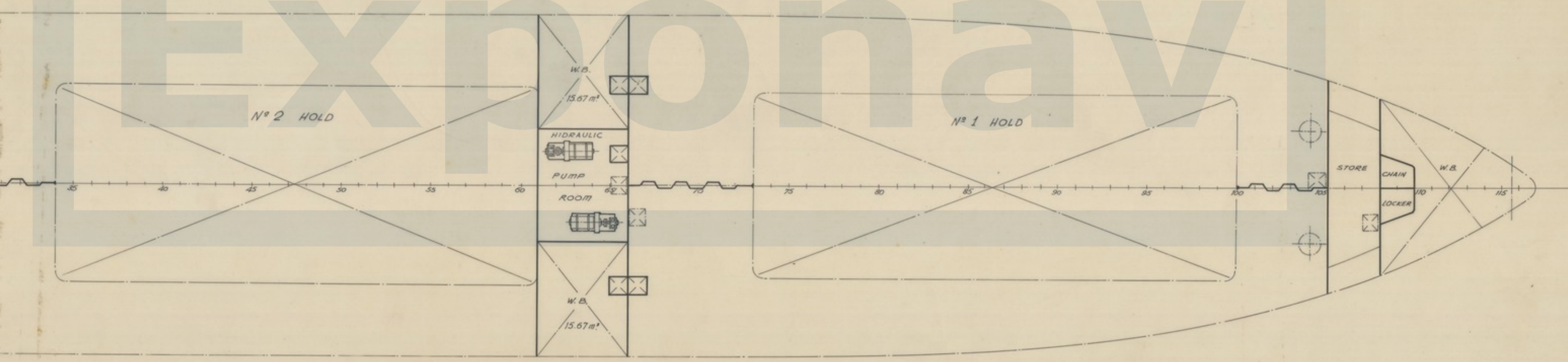
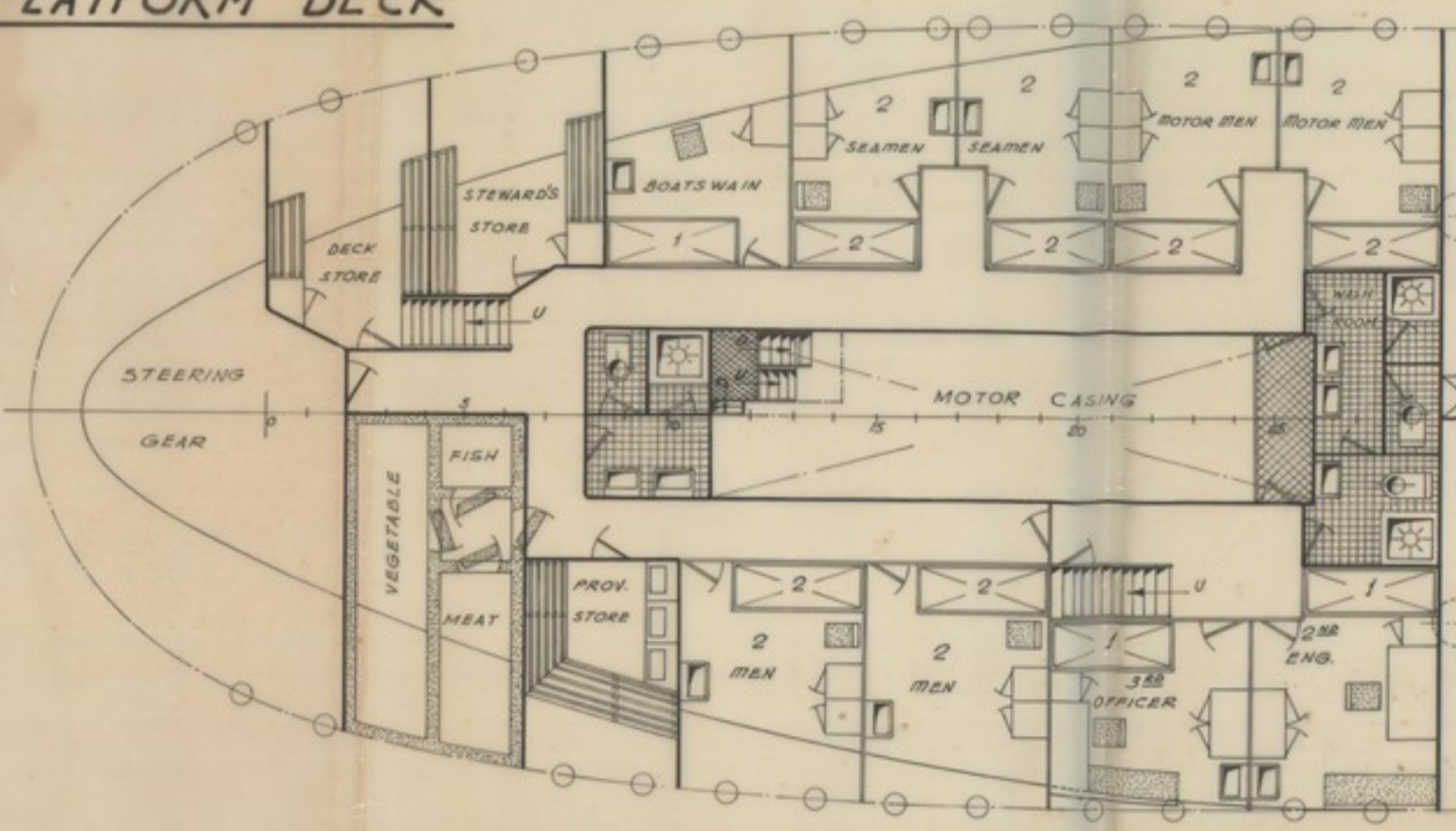


RAISED QUARTER DECK

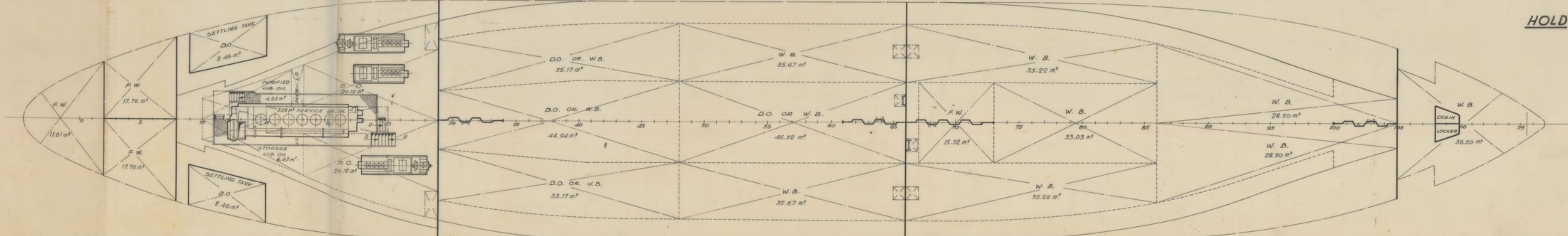
MAIN DECK



PLATFORM DECK



HOLD



MAIN CHARACTERISTICS

LENGTH OVERALL	70.00 mts.
LENGTH BETWEEN PER	72.00 "
BREADTH MOULDED	12.00 "
DEPTH	5.48 - 6.78 "
DRAUGHT WITH TIMBER FREEBOARD	5.15 "
DEADWEIGHT	2700 TNS. MTS.
HOLDS - TOTAL BALE	3395 m <sup>3</sup> ~ 102,270 cu ft.
HOLDS - TOTAL GRAIN	3064 m <sup>3</sup> ~ 108,210 cu ft.
FRESH WATER	60 m <sup>3</sup>
DIESEL OIL	227 "
BALLAST (TANKS BALLAST ONLY)	310 "
B.H.P. MAXIMUM	1750 B.H.P.
TRIAL SPEED	12.5 KNOTS.

CALCULADO	FECHA 15-XI-61	Copia enviada al	ASTAND
DIBUJADO	BUQUE - 161	VALIDA	
COMPROBADO	ESCALA 1:100	El Ing. Jefe	PLANO N.º
			OF 2100 TNS. D.W.
			GENERAL ARRANGEMENT.