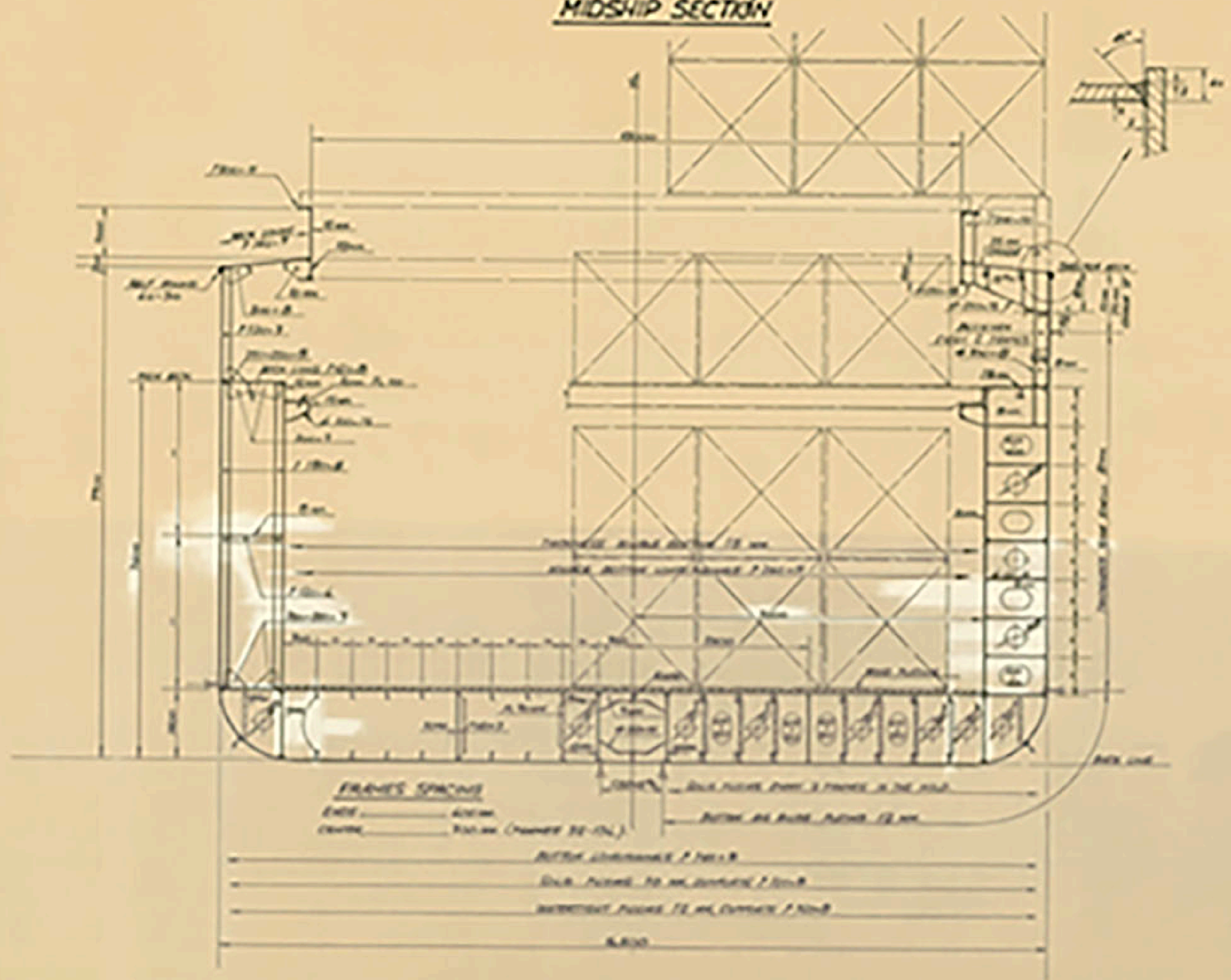


**MIDSHIP SECTION**



**EQUIPMENT NUMBER**

$NA = 2^{10} + 2^{20} + 0.1A = 111$   
(2 x 111 TONS)

- 2 BARS ABOVE STRUCTURE OF 200x200
- 475 MTS OF STEEL CHANNELS OVER 1 OF 25 MM
- 200 MTS THE LINE OF 475MM CHANNELS
- 4 BARS ABOVE OF 150 MTS. LEAVE BACK AND 250 MM CHANNEL CHANNELS

**FORESEEN CARGOES**

- ONE DOUBLE BAY \_\_\_\_\_ 11 TONS
- ONE BAY \_\_\_\_\_ 11 TONS
- ONE BAY \_\_\_\_\_ 7 TONS

**CLASSIFICATION**

GENERAL VESSEL 1 2/3 E ● 100% DECK  
CARGO SHIP + CONTAINER SHIP ● 100% DECK

**MAIN CHARACTERISTICS**

LENGTH OVERALL	75.00 M
WIDTH PERPENDICULAR	12.00 M
MAXIMUM BREADTH	12.00 M
DEPTH MAIN DECK	1.00 M
DEPTH DECK	1.00 M
MAXIMUM DRAUGHT	10.00 M
DRAUGHT	1.00 M

**FRAMES SPACING**

END	4000
CENTRE	2000 (NUMBER 20-10)
INTERMEDIATE	2000
SPACE FROM 10 M TO 20 M	2000
INTERMEDIATE FROM 10 M TO 20 M	2000
SPACE	2000

<b>TECNOR</b> OFICINA TECNICA INDUSTRIAL Y MARITIMA		
CONSTRUCTORA	ASTILLEROS CORRIENTES S.A.	DESTINO
REPUBLICA DE ARGENTINA		
<b>6500 TON MULTIPURPOSE CARGO VESSEL</b>		
<b>MIDSHIP SECTION</b>		
PROYECTO	CONSTRUCCION	REVISION
ELABORADO	REVISADO	LA DIBUJADA
APROBADO	CONTRATADO	FECHA 1964

