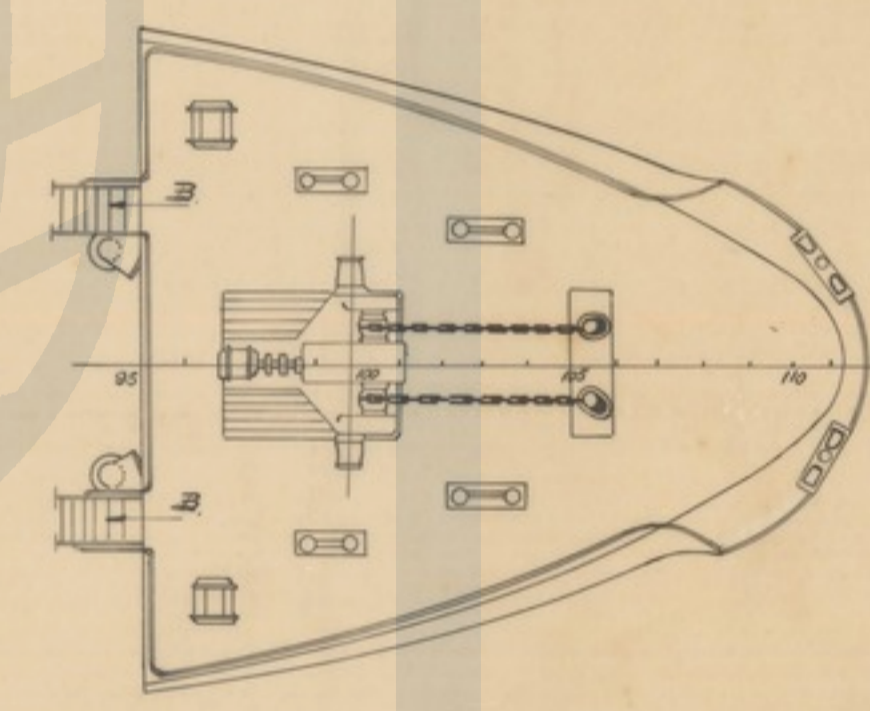
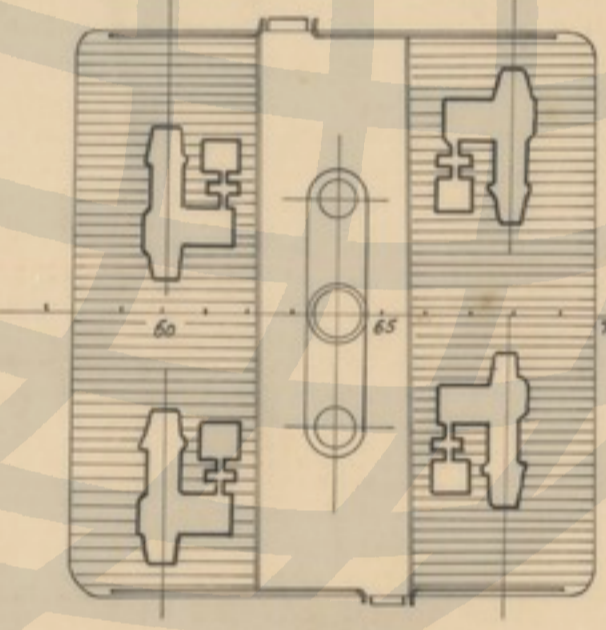
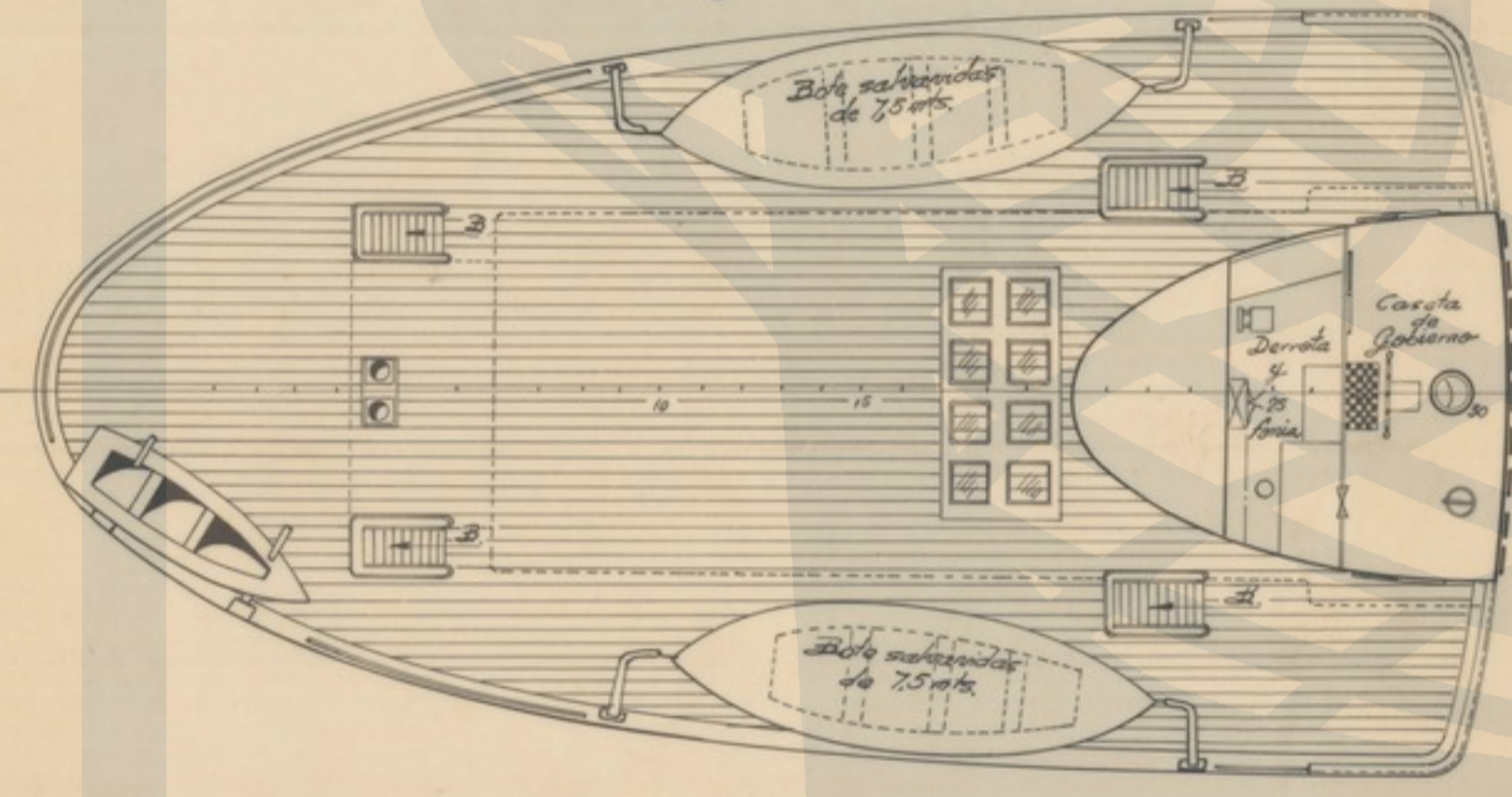
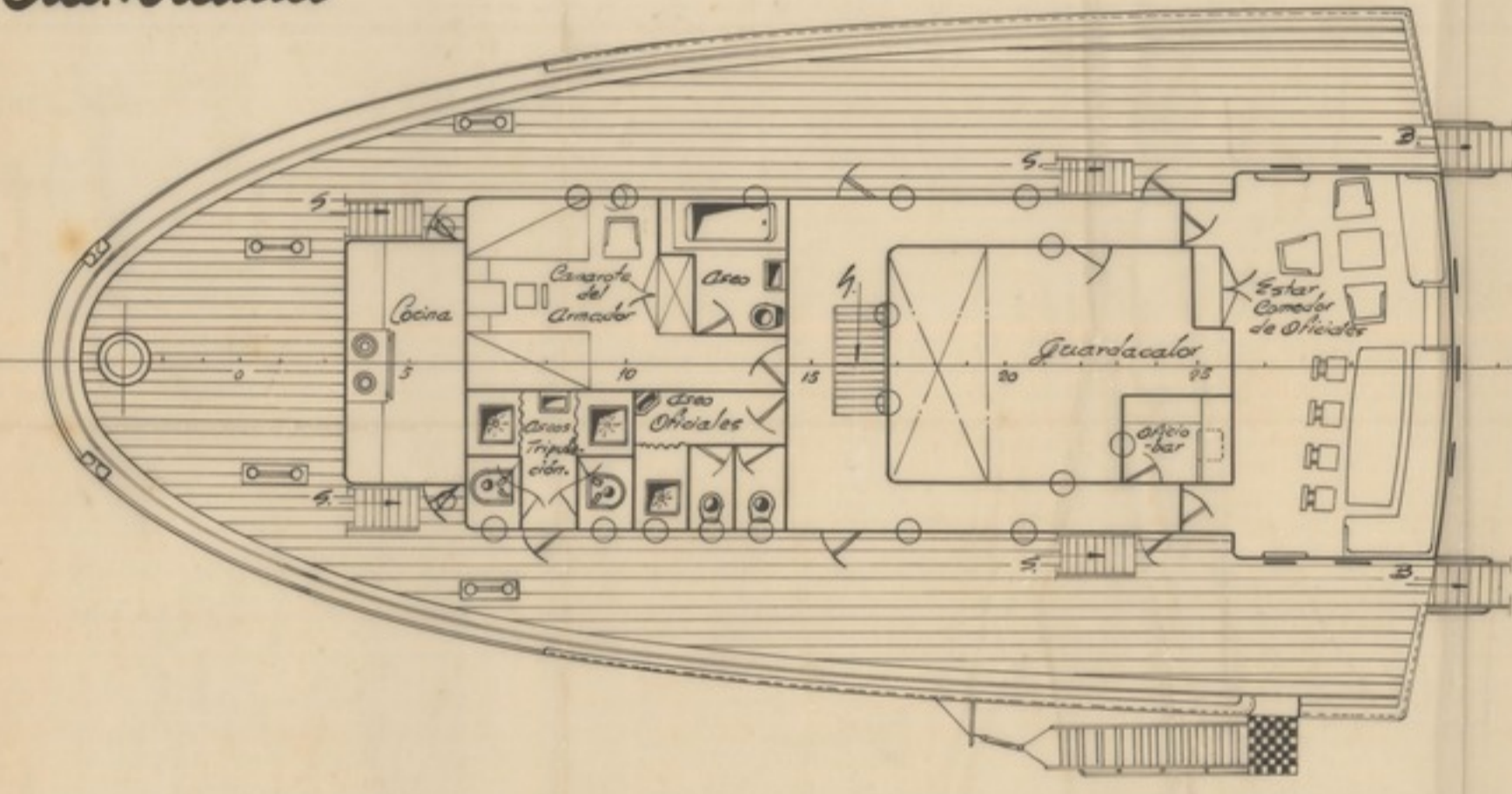


Perfil

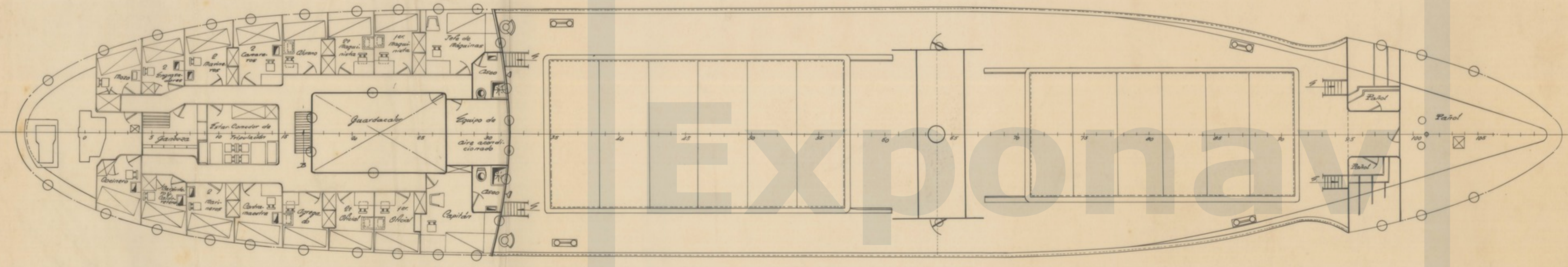
Cta. Toldilla

Techo Cta. Toldilla y Puente

Plataforma de Chigres.



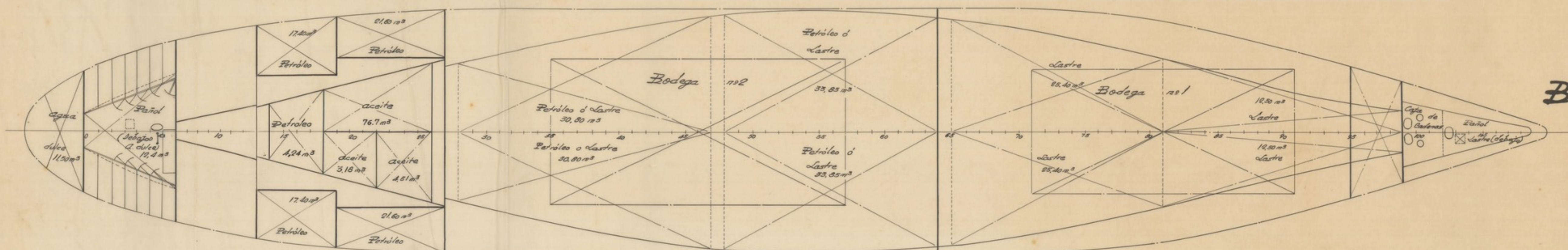
Cta. Castillo



Cta. alta

Características

Calma total	59,000 mts
Calma en la Plata caba	65,000 "
Calma entre pax	64,000 "
Manga de traca	11,000 "
Puntal de traca	5,025 "



Bodega

Fecha	30.1.60	Nombre	E. V. S.	Salida	85
Impreso					
Escala	1:100	"Carstón Pequeño"		Origen	NC. 85
		Disposicion General			NR. 5004/A