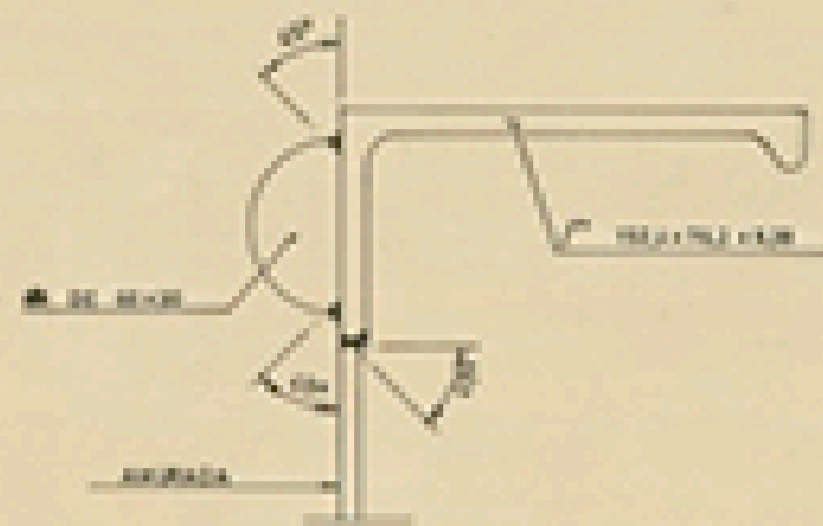
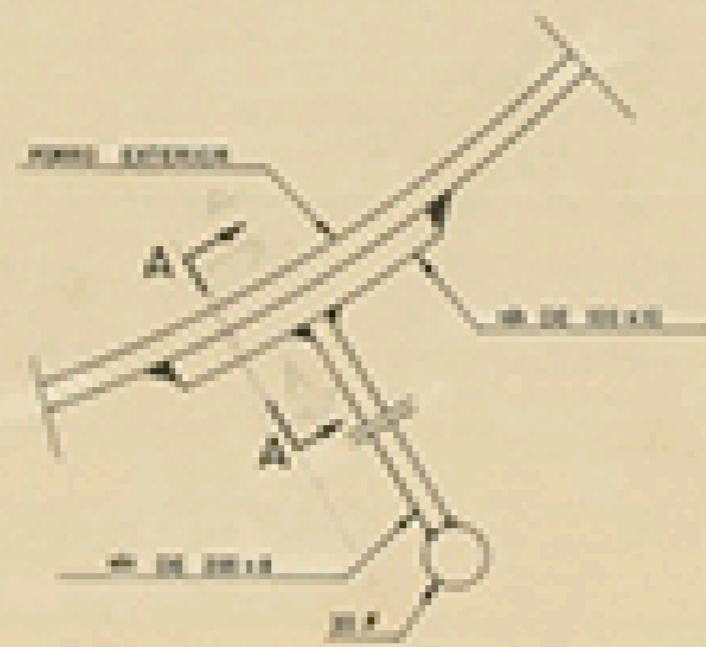


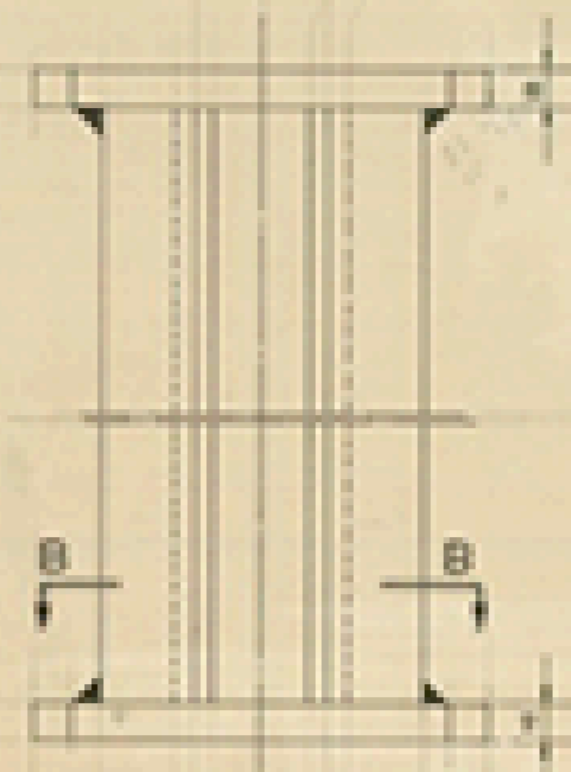
DETALLE 1
ESCALA 1:20



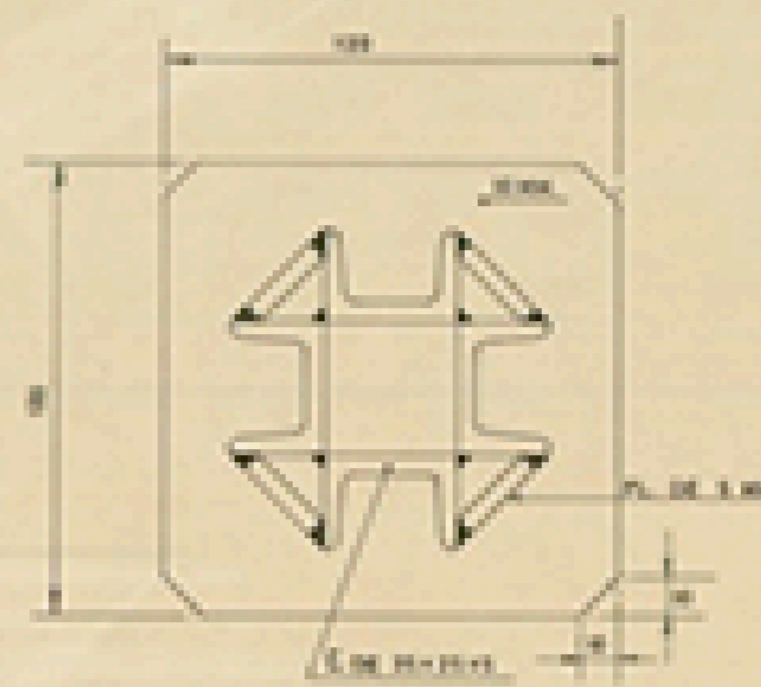
DETALLE 3
ESCALA 1:20



DETALLE 4
ESCALA 1:20



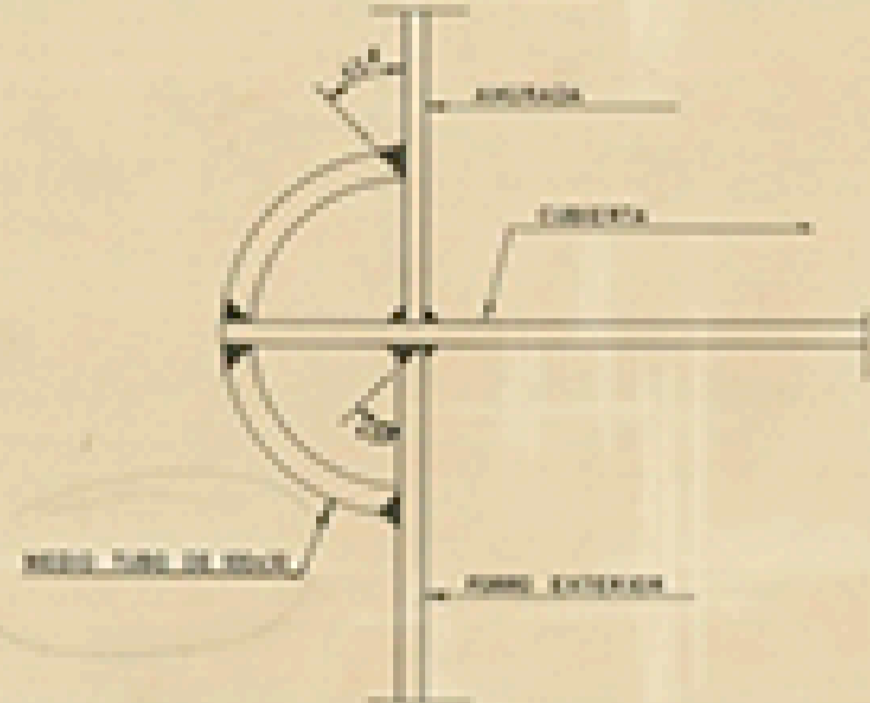
SECCION "B-B"
ESCALA 1:20



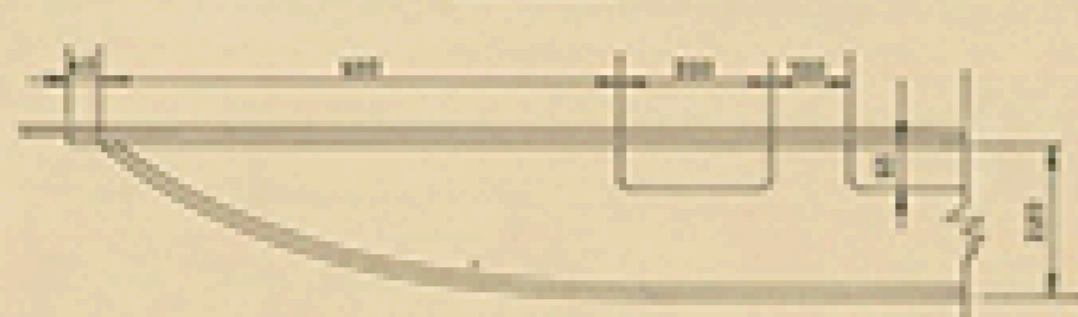
EQUIPO

- 2 ejes principales articulados de 350 Kgs cada uno
- 8 mts. de sodano con control de 20 l. m²
- 2 amarras de 120m. cada una y 7.000Kgs. de carga de rotura

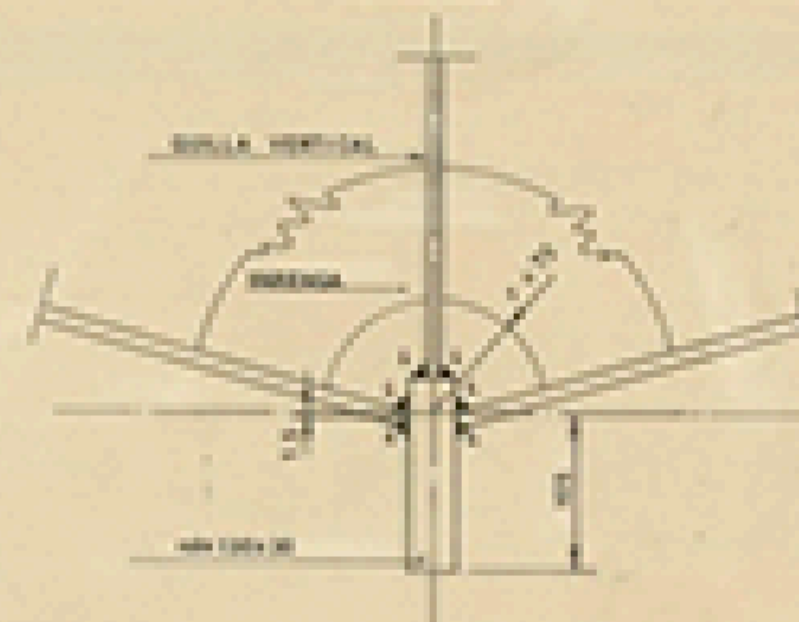
DETALLE 2
ESCALA 1:20



SECCION "A-A"
ESCALA 1:20

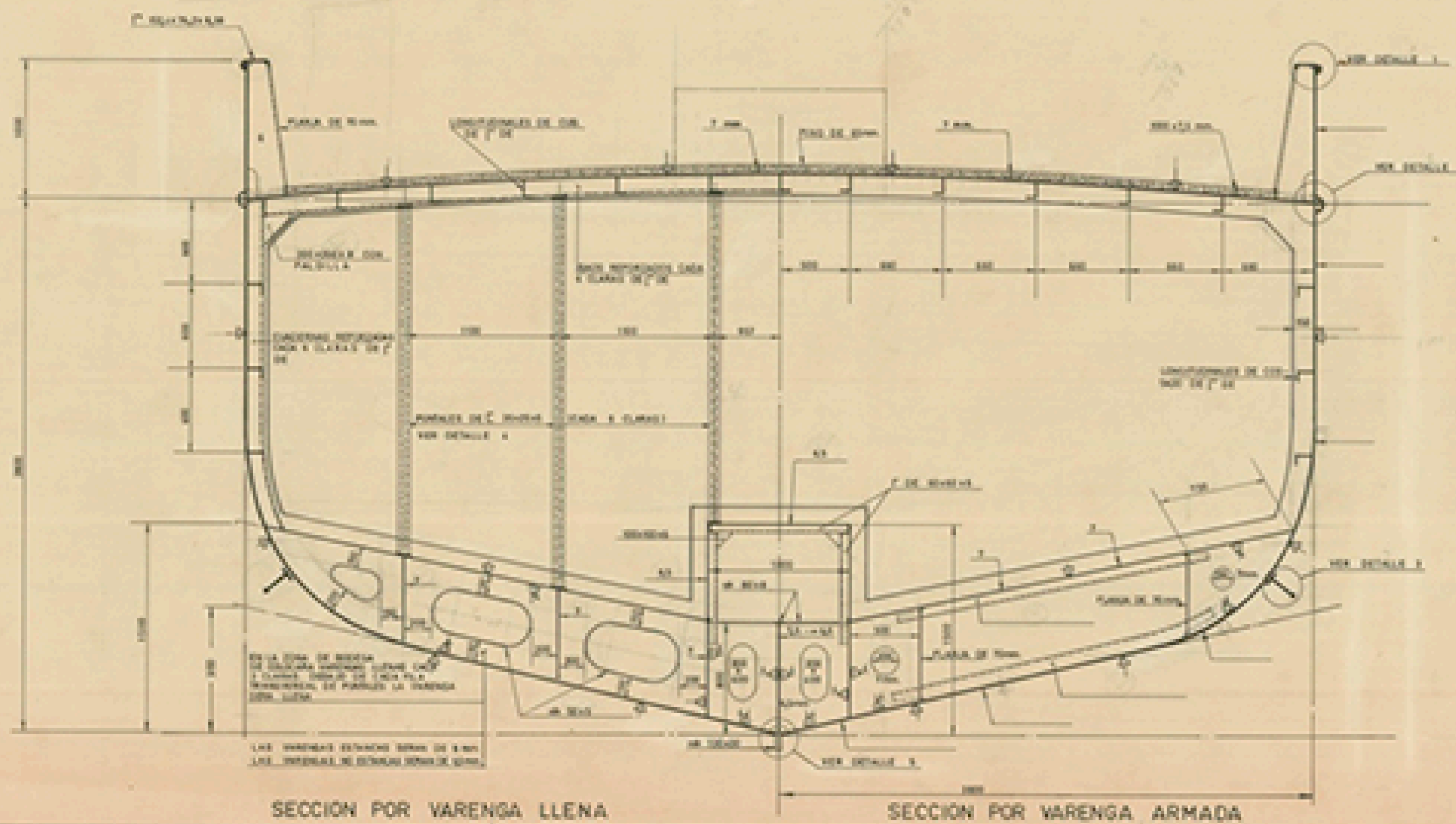


DETALLE 5
ESCALA 1:20



CARACTERISTICAS PRINCIPALES

| | |
|-------------------------|-----------|
| ESLORA TOTAL | 10,20 MTS |
| - DE REGISTRO | 9,00 " |
| - ENTRE PERPENDICULARES | 7,60 " |
| RANSA DE TRAZADO | 1,50 " |
| PUNTAL | 1,50 " |
| CALADO MEDIO DE TRAZADO | 3,00 " |



V0163
0/005

**MOTOPESQUERO
TIPO T-A 28.50 A.**

CUADERNA MAESTRA

1:25

1

1

JUNIO
1970